

Datasheet for ABIN2792127  
**anti-DIABLO antibody (C-Term)**



[Go to Product page](#)

2 Images

### Overview

Quantity:	100 µL
Target:	DIABLO
Binding Specificity:	C-Term
Reactivity:	Human, Cow, Dog, Horse, Pig
Host:	Rabbit
Clonality:	Polyclonal
Conjugate:	This DIABLO antibody is un-conjugated
Application:	Western Blotting (WB), Immunohistochemistry (IHC)

### Product Details

Immunogen:	The immunogen is a synthetic peptide directed towards the C terminal region of human DIABLO
Sequence:	LVKLVQVEEVH QLSRKAETKL AEAQIEELRQ KTQEEGEERA ESEQEAYLRE
Predicted Reactivity:	Cow: 85%, Dog: 92%, Horse: 85%, Human: 100%, Pig: 85%
Characteristics:	This is a rabbit polyclonal antibody against DIABLO. It was validated on Western Blot using a cell lysate as a positive control.
Purification:	Protein A purified

### Target Details

Target:	DIABLO
Alternative Name:	DIABLO ( <a href="#">DIABLO Products</a> )

## Target Details

---

Background:	<p>DIABLO is an inhibitor of apoptosis protein (IAP)-binding protein. The encoded mitochondrial protein enters the cytosol when cells undergo apoptosis, and it moderates the caspase inhibition of IAPs. Multiple polyadenylation sites have been found for this gene. Several alternatively spliced transcript variants that encode distinct isoforms have been described for this gene but the validity of some transcripts, and their predicted ORFs, has not been determined conclusively.</p> <p>Alias Symbols: SMAC, SMAC3, DFNA64, DIABLO-S</p> <p>Protein Interaction Partner: BIRC7, ARL6IP1, UBC, XIAP, BIRC2, BIRC6, BIRC3, MDM2, GABPA, AP1B1, SSRP1, ABCE1, GMPPB, LIMCH1, BMH1, AREL1, SLC25A47, MAML2, UBL4A, NR4A1, ARNT, MALT1, BIRC8, HTRA2, CDC40, DIABLO, ELAVL1, UBE2K, ZNF746, TOLLIP, UFM1, TRAF2, TRAF1, EEF1A1, Ngfrap1, BIRC</p> <p>Protein Size: 186</p>
Molecular Weight:	21 kDa
Gene ID:	56616
NCBI Accession:	<a href="#">NM_138930</a> , <a href="#">NP_620308</a>
UniProt:	<a href="#">Q502X2</a>
Pathways:	<a href="#">Apoptosis</a> , <a href="#">Caspase Cascade in Apoptosis</a> , <a href="#">Positive Regulation of Endopeptidase Activity</a>

## Application Details

---

Application Notes:	Optimal working dilutions should be determined experimentally by the investigator.
Comment:	Antigen size: 186 AA
Restrictions:	For Research Use only

## Handling

---

Format:	Liquid
Concentration:	Lot specific
Buffer:	Liquid. Purified antibody supplied in 1x PBS buffer with 0.09 % (w/v) sodium azide and 2 % sucrose.
Preservative:	Sodium azide
Precaution of Use:	This product contains Sodium azide: a POISONOUS AND HAZARDOUS SUBSTANCE which should be handled by trained staff only.

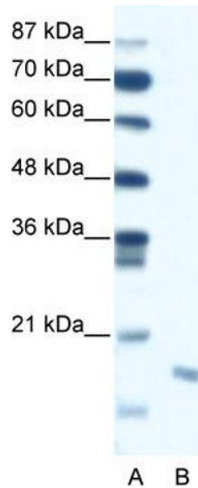
## Handling

Handling Advice: Avoid repeated freeze-thaw cycles.

Storage: -20 °C

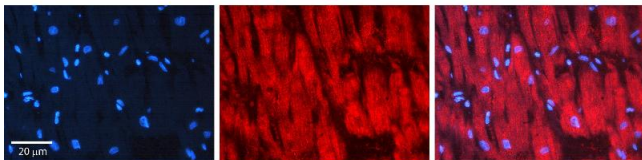
Storage Comment: For short term use, store at 2-8°C up to 1 week. For long term storage, store at -20°C in small aliquots to prevent freeze-thaw cycles.

## Images



### Western Blotting

**Image 1.** WB Suggested Anti-DIABLO Antibody Titration: 0.3125ug/ml ELISA Titer: 1:312500 Positive Control: Jurkat cell lysate



### Immunohistochemistry

**Image 2.** Rabbit Anti-DIABLO Antibody AV Formalin Fixed Paraffin Embedded Tissue: Human heart Tissue Observed Staining: Cytoplasmic Primary Antibody Concentration: 1:100 Other Working Concentrations: N/A Secondary Antibody: Donkey anti-Rabbit-Cy3 Secondary Antibody Concentration: 1:200 Magnification: 20X Exposure Time: 0.5 - 2.0 sec