

Datasheet for ABIN2792131
anti-RIPK1 antibody (Middle Region)

3 Images

[Go to Product page](#)

Overview

Quantity:	100 µL
Target:	RIPK1
Binding Specificity:	Middle Region
Reactivity:	Human, Dog, Cow, Horse
Host:	Rabbit
Clonality:	Polyclonal
Conjugate:	This RIPK1 antibody is un-conjugated
Application:	Western Blotting (WB)

Product Details

Immunogen:	The immunogen is a synthetic peptide directed towards the middle region of human RIPK1
Sequence:	RRRRVSHDPF AQQRPYENFQ NTEGKGTAYS SAASHGNAVH QPSGLTSQPQ
Predicted Reactivity:	Cow: 100%, Dog: 91%, Horse: 83%, Human: 100%
Characteristics:	This is a rabbit polyclonal antibody against RIPK1. It was validated on Western Blot using a cell lysate as a positive control.

Target Details

Target:	RIPK1
Alternative Name:	RIPK1 (RIPK1 Products)
Background:	FAK overexpression in human tumors provides a survival signal function by binding to RIP and

Target Details

inhibiting its interaction with the death receptor complex.

Alias Symbols: RIP, RIP1

Protein Interaction Partner: RFFL, RIPK1, UBC, TRAF2, TRAF1, TNFRSF1A, TNF, OTUD1, YOD1, TRADD, IKBKG, FADD, CASP8, MAP3K7, BMH1, BIRC3, BIRC2, MAP3K8, OPTN, NUMBL, CFLAR, HSP90AA1, RIPK3, USP4, TNFAIP3, TNFSF10, LRRK2, TNFRSF10B, MAP3K3, HHV8GK18_gp80, DAB2IP, TNFRSF1B, IKBKB, CHUK,

Protein Size: 671

Molecular Weight: 76 kDa

Gene ID: 8737

NCBI Accession: [NM_003804](#), [NP_003795](#)

UniProt: [Q13546](#)

Pathways: [NF-kappaB Signaling](#), [Apoptosis](#), [Caspase Cascade in Apoptosis](#), [TLR Signaling](#), [Activation of Innate immune Response](#), [Inositol Metabolic Process](#), [Positive Regulation of Endopeptidase Activity](#), [Hepatitis C](#), [Protein targeting to Nucleus](#), [Toll-Like Receptors Cascades](#), [Negative Regulation of intrinsic apoptotic Signaling](#), [SARS-CoV-2 Protein Interactome](#), [Ubiquitin Proteasome Pathway](#)

Application Details

Application Notes: Optimal working dilutions should be determined experimentally by the investigator.

Comment: Antigen size: 671 AA

Restrictions: For Research Use only

Handling

Format: Liquid

Concentration: Lot specific

Buffer: Liquid. Purified antibody supplied in 1x PBS buffer with 0.09 % (w/v) sodium azide and 2 % sucrose.

Preservative: Sodium azide

Precaution of Use: This product contains Sodium azide: a POISONOUS AND HAZARDOUS SUBSTANCE which should be handled by trained staff only.

Handling Advice: Avoid repeated freeze-thaw cycles.

Handling

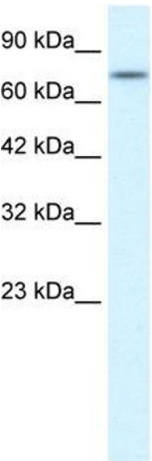
Storage:	-20 °C
Storage Comment:	For short term use, store at 2-8°C up to 1 week. For long term storage, store at -20°C in small aliquots to prevent freeze-thaw cycles.

Images



Western Blotting

Image 1. WB Suggested Anti-RIPK1 Antibody Titration: 0.2-1 ug/ml Positive Control: HepG2 cell lysate

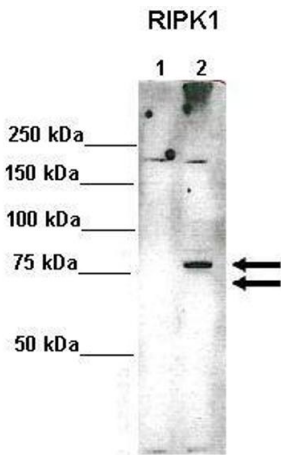


Rabbit Anti- RIPK1 Antibody
Catalog Number: AVARP02038
Lot Number: QC0300
Lane: Jurkat Cell Lysate

Antibody Titration: 0.25µg/ml
Gel Concentration: 12%

Western Blotting

Image 2. WB Suggested Anti-RIPK1
Antibody Titration: 0.2-1 µg/mL
Positive Control: HepG2 cell lysate



Western Blotting

Image 3. Lanes: Lane 1: 10ug 293(Trex)FlpIn-RIPK1-HA-Strep (-Doxycycline)-non induced Lane 2: 10ug 293(Trex)FlpIn-RIPK1-HA-Strep (+Doxycycline)-induced
Primary Antibody Dilution: 1:1000 Secondary Antibody: Anti-rabbit HRP Secondary Antibody Dilution: 1:2000 Gene Name: RIPK1 Submitted by: Dr. Tencho Tenev, The Breakthrough Breast Cancer Research Centre, Institute of Cancer Research

See Immunoblot 2 Data and Customer Feedback for more Information