



Datasheet for ABIN2792134  
**anti-WDR3 antibody (Middle Region)**



[Go to Product page](#)

1 Image

Overview

Quantity:	100 µL
Target:	WDR3
Binding Specificity:	Middle Region
Reactivity:	Human, Cow, Rat, Zebrafish (Danio rerio), Horse, Pig, Rabbit, Guinea Pig
Host:	Rabbit
Clonality:	Polyclonal
Conjugate:	This WDR3 antibody is un-conjugated
Application:	Western Blotting (WB)

Product Details

Immunogen:	The immunogen is a synthetic peptide directed towards the middle region of human WDR3
Sequence:	VIGFNMAGLD YLKRECEAKS EVMFFADATS HLEEKKRKRK KREKLILTLT
Predicted Reactivity:	Cow: 100%, Guinea Pig: 93%, Horse: 100%, Human: 100%, Pig: 100%, Rabbit: 100%, Rat: 80%, Zebrafish: 78%
Characteristics:	This is a rabbit polyclonal antibody against WDR3. It was validated on Western Blot using a cell lysate as a positive control.
Purification:	Affinity Purified

Target Details

Target:	WDR3
---------	------

## Target Details

---

Alternative Name: WDR3 ([WDR3 Products](#))

---

Background: WDR3 is a nuclear protein containing 10 WD repeats. WD repeats are approximately 30- to 40-amino acid domains containing several conserved residues, which usually include a trp-asp at the C-terminal end. Proteins belonging to the WD repeat family are involved in a variety of cellular processes, including cell cycle progression, signal transduction, apoptosis, and gene regulation. This gene encodes a nuclear protein containing 10 WD repeats. WD repeats are approximately 30- to 40-amino acid domains containing several conserved residues, which usually include a trp-asp at the C-terminal end. Proteins belonging to the WD repeat family are involved in a variety of cellular processes, including cell cycle progression, signal transduction, apoptosis, and gene regulation.

Alias Symbols: FLJ12796, DIP2, UTP12

Protein Interaction Partner: UBC, RPA3, RPA2, RPA1, EED, rev, SOX2, PNO1, BYSL, SIRT7, SUMO2, USP43, USP36, PDE10A,

Protein Size: 943

---

Molecular Weight: 106 kDa

---

Gene ID: 10885

---

NCBI Accession: [NM\\_006784](#), [NP\\_006775](#)

---

UniProt: [Q9UNX4](#)

---

## Application Details

---

Application Notes: Optimal working dilutions should be determined experimentally by the investigator.

---

Comment: Antigen size: 943 AA

---

Restrictions: For Research Use only

---

## Handling

---

Format: Liquid

---

Concentration: Lot specific

---

Buffer: Liquid. Purified antibody supplied in 1x PBS buffer with 0.09 % (w/v) sodium azide and 2 % sucrose.

---

Preservative: Sodium azide

---

Precaution of Use: This product contains Sodium azide: a POISONOUS AND HAZARDOUS SUBSTANCE which

---

## Handling

---

should be handled by trained staff only.

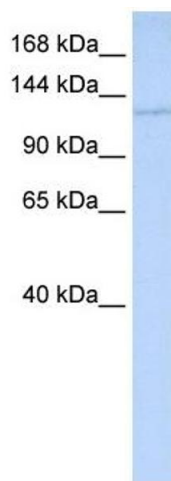
Handling Advice: Avoid repeated freeze-thaw cycles.

Storage: -20 °C

Storage Comment: For short term use, store at 2-8°C up to 1 week. For long term storage, store at -20°C in small aliquots to prevent freeze-thaw cycles.

## Images

---



### Western Blotting

**Image 1.** WB Suggested Anti-WDR3 Antibody Titration: 0.2-1 ug/ml ELISA Titer: 1:1562500 Positive Control: HeLa cell lysate WDR3 is supported by BioGPS gene expression data to be expressed in HeLa