

Datasheet for ABIN2792142
anti-YWHAE antibody (Middle Region)[Go to Product page](#)

2 Images

1 Publication

Overview

Quantity:	100 µL
Target:	YWHAE
Binding Specificity:	Middle Region
Reactivity:	Mouse, Zebrafish (Danio rerio), Guinea Pig, Dog
Host:	Rabbit
Clonality:	Polyclonal
Conjugate:	This YWHAE antibody is un-conjugated
Application:	Western Blotting (WB)

Product Details

Immunogen:	The immunogen is a synthetic peptide directed towards the middle region of human YWHAE
Sequence:	ELDTLSEESY KDSTLIMQLL RDNLTLTWSD MQGDGEEQNK EALQDVEDEN
Predicted Reactivity:	Dog: 100%, Guinea Pig: 100%, Mouse: 100%, Zebrafish: 100%
Characteristics:	This is a rabbit polyclonal antibody against YWHAE. It was validated on Western Blot using a cell lysate as a positive control.
Purification:	Affinity Purified

Target Details

Target:	YWHAE
Alternative Name:	YWHAE (YWHAE Products)

Target Details

Background:	<p>YWHAE is an adapter protein implicated in the regulation of a large spectrum of both general and specialized signaling pathway. YWHAE binds to a large number of partners, usually by recognition of a phosphoserine or phosphothreonine motif. The binding generally results in the modulation of the activity of the binding partner. This gene product belongs to the 14-3-3 family of proteins which mediate signal transduction by binding to phosphoserine-containing proteins. This highly conserved protein family is found in both plants and mammals, and this protein is 100 % identical to the mouse ortholog. It interacts with CDC25 phosphatases, RAF1 and IRS1 proteins, suggesting its role in diverse biochemical activities related to signal transduction, such as cell division and regulation of insulin sensitivity. It has also been implicated in the pathogenesis of small cell lung cancer. Publication Note: This RefSeq record includes a subset of the publications that are available for this gene. Please see the Entrez Gene record to access additional publications.</p> <p>Alias Symbols: 14-3-3E, FLJ45465, KCIP-1, MDCR, MDS</p> <p>Protein Interaction Partner: DTL, HUWE1, FAM53C, FBXW11, SORBS2, UBC, ABL1, GRB10, SIK2, CEP57, SIK3, TP53, IRS4, CBL, TUBB2A, TWF2, PROSC, FERMT2, PDIA4, RAP1GDS1, PTMA, PPP1R2, PDHB, PAK2, PAFAH1B2, YWHAH, XPO1, VCL, GSS, G6PD, EIF5, TBCB, CAPNS1, CAPN2, ALDH7A1, ATIC, ASNS, SCPEP1</p> <p>Protein Size: 255</p>
Molecular Weight:	29 kDa
Gene ID:	7531
NCBI Accession:	NM_006761 , NP_006752
UniProt:	P62258
Pathways:	Neurotrophin Signaling Pathway , Myometrial Relaxation and Contraction , M Phase

Application Details

Application Notes:	Optimal working dilutions should be determined experimentally by the investigator.
Comment:	Antigen size: 255 AA
Restrictions:	For Research Use only

Handling

Format:	Liquid
Concentration:	Lot specific

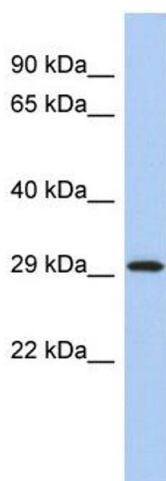
Handling

Buffer:	Liquid. Purified antibody supplied in 1x PBS buffer with 0.09 % (w/v) sodium azide and 2 % sucrose.
Preservative:	Sodium azide
Precaution of Use:	This product contains Sodium azide: a POISONOUS AND HAZARDOUS SUBSTANCE which should be handled by trained staff only.
Handling Advice:	Avoid repeated freeze-thaw cycles.
Storage:	-20 °C
Storage Comment:	For short term use, store at 2-8°C up to 1 week. For long term storage, store at -20°C in small aliquots to prevent freeze-thaw cycles.

Publications

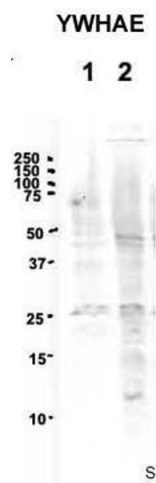
Product cited in:	Tubon, Tansey, Herr: "A nonconserved surface of the TFIIIB zinc ribbon domain plays a direct role in RNA polymerase II recruitment." in: Molecular and cellular biology , Vol. 24, Issue 7, pp. 2863-74, (2004) (PubMed).
-------------------	--

Images



Western Blotting

Image 1. WB Suggested Anti-YWHAЕ Antibody Titration: 0.2-1 ug/ml ELISA Titer: 1:12500 Positive Control: Human Spleen



Western Blotting

Image 2.