

Datasheet for ABIN2792144
anti-14-3-3 theta antibody (N-Term)

3 Images

[Go to Product page](#)

Overview

Quantity:	100 µL
Target:	14-3-3 theta (YWHAQ)
Binding Specificity:	N-Term
Reactivity:	Human, Mouse, Rat, Cow, Dog, Zebrafish (Danio rerio), Guinea Pig
Host:	Rabbit
Clonality:	Polyclonal
Conjugate:	This 14-3-3 theta antibody is un-conjugated
Application:	Western Blotting (WB), Immunohistochemistry (IHC)

Product Details

Immunogen:	The immunogen is a synthetic peptide directed towards the N terminal region of human YWHAQ
Sequence:	SVAYKNVVGG RRSARVISS IEQKTDTSK KLQLIKDYRE KVESELRISIC
Predicted Reactivity:	Cow: 100%, Dog: 100%, Guinea Pig: 100%, Human: 100%, Mouse: 100%, Rat: 100%, Zebrafish: 75%
Characteristics:	This is a rabbit polyclonal antibody against YWHAQ. It was validated on Western Blot and immunohistochemistry.
Purification:	Affinity Purified

Target Details

Target:	14-3-3 theta (YWHAQ)
---------	----------------------

Target Details

Alternative Name:	YWHAQ (YWHAQ Products)
Background:	<p>YWHAQ belongs to the 14-3-3 family of proteins which mediate signal transduction by binding to phosphoserine-containing proteins. This highly conserved protein family is found in both plants and mammals, and this protein is 99 % identical to the mouse and rat orthologs. This gene is upregulated in patients with amyotrophic lateral sclerosis. This gene product belongs to the 14-3-3 family of proteins which mediate signal transduction by binding to phosphoserine-containing proteins. This highly conserved protein family is found in both plants and mammals, and this protein is 99 % identical to the mouse and rat orthologs. This gene is upregulated in patients with amyotrophic lateral sclerosis. It contains in its 5' UTR a 6 bp tandem repeat sequence which is polymorphic, however, there is no correlation between the repeat number and the disease.</p> <p>Alias Symbols: 1C5, HS1, 14-3-3</p> <p>Protein Interaction Partner: UBC, TNFAIP3, TRIM42, RAF1, PIK3R2, PIK3C3, FUS, DTL, MAPT, ABL1, SGK1, SIK3, SUMO2, TUBGCP3, IRS4, HDAC5, HDAC4, STAU1, MDM2, TGM2, SMS, ALDH7A1, YWHAZ, YWHAH, GNAI3, G6PD, EIF5, EEF2, ECHS1, CAPNS1, CAPN1, LDHB, YWHAG, YWHAB, VCL, UBE2V1, TXNDC5, SMEK2,</p> <p>Protein Size: 245</p>
Molecular Weight:	28 kDa
Gene ID:	10971
NCBI Accession:	NM_006826 , NP_006817
UniProt:	P27348
Pathways:	Apoptosis , Myometrial Relaxation and Contraction

Application Details

Application Notes:	Optimal working dilutions should be determined experimentally by the investigator.
Comment:	Antigen size: 245 AA
Restrictions:	For Research Use only

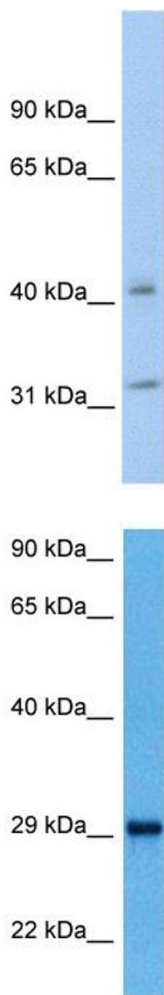
Handling

Format:	Liquid
Concentration:	Lot specific

Handling

Buffer:	Liquid. Purified antibody supplied in 1x PBS buffer with 0.09 % (w/v) sodium azide and 2 % sucrose.
Preservative:	Sodium azide
Precaution of Use:	This product contains Sodium azide: a POISONOUS AND HAZARDOUS SUBSTANCE which should be handled by trained staff only.
Handling Advice:	Avoid repeated freeze-thaw cycles.
Storage:	-20 °C
Storage Comment:	For short term use, store at 2-8°C up to 1 week. For long term storage, store at -20°C in small aliquots to prevent freeze-thaw cycles.

Images

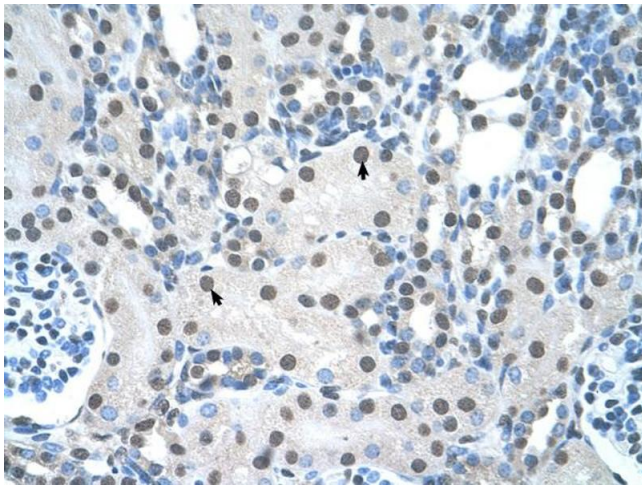


Western Blotting

Image 1. WB Suggested Anti-YWHAQ Antibody Titration: 0.2-1 ug/ml Positive Control: SW620 cell lysate YWHAQ is strongly supported by BioGPS gene expression data to be expressed in Human SW620 cells

Western Blotting

Image 2. Host: Mouse Target Name: YWHAQ Sample Tissue: Mouse Kidney Antibody Dilution: 1ug/ml



Immunohistochemistry

Image 3. Human kidney