

Datasheet for ABIN2792149
anti-CDK6 antibody (C-Term)



[Go to Product page](#)

3 Images

Overview

Quantity:	100 µL
Target:	CDK6
Binding Specificity:	C-Term
Reactivity:	Human, Mouse, Cow, Dog, Horse, Rabbit, Pig
Host:	Rabbit
Clonality:	Polyclonal
Conjugate:	This CDK6 antibody is un-conjugated
Application:	Western Blotting (WB)

Product Details

Immunogen:	The immunogen is a synthetic peptide directed towards the C terminal region of human CDK6
Sequence:	LLKCLTFNPA KRISAYSALS HPYFQDLERC KENLDShLPP SQNTSELNTA
Predicted Reactivity:	Cow: 84%, Dog: 84%, Horse: 84%, Human: 100%, Mouse: 76%, Pig: 84%, Rabbit: 84%
Characteristics:	This is a rabbit polyclonal antibody against CDK6. It was validated on Western Blot using a cell lysate as a positive control.
Purification:	Protein A purified

Target Details

Target:	CDK6
Alternative Name:	CDK6 (CDK6 Products)

Target Details

Background: CDK6 is a member of the cyclin-dependent protein kinase (CDK) family. CDK family members are highly similar to the gene products of *Saccharomyces cerevisiae* cdc28, and *Schizosaccharomyces pombe* cdc2, and are known to be important regulators of cell cycle progression. This kinase is a catalytic subunit of the protein kinase complex that is important for cell cycle G1 phase progression and G1/S transition. The activity of this kinase first appears in mid-G1 phase, which is controlled by the regulatory subunits including D-type cyclins and members of INK4 family of CDK inhibitors. This kinase, as well as CDK4, has been shown to phosphorylate, and thus regulate the activity of, tumor suppressor protein Rb. The protein encoded by this gene is a member of the cyclin-dependent protein kinase (CDK) family. CDK family members are highly similar to the gene products of *Saccharomyces cerevisiae* cdc28, and *Schizosaccharomyces pombe* cdc2, and are known to be important regulators of cell cycle progression. This kinase is a catalytic subunit of the protein kinase complex that is important for cell cycle G1 phase progression and G1/S transition. The activity of this kinase first appears in mid-G1 phase, which is controlled by the regulatory subunits including D-type cyclins and members of INK4 family of CDK inhibitors. This kinase, as well as CDK4, has been shown to phosphorylate, and thus regulate the activity of, tumor suppressor protein Rb.

Alias Symbols: MGC59692, PLSTIRE

Protein Interaction Partner: PSMA3, DAB1, CDKN2D, CDKN2C, CDKN2B, CCND3, UBC, CCND2, AMY2A, CDKN2A, CDK6, PIGR, DMBT1, WDR33, CDKL3, RB1, CDK4, UCHL1, PML, NUMA1, NFATC3, MYC, MLLT3, MEF2D, MCM2, ISL1, HSP90AA1, HSF1, FOXO3, FOXM1, EZH2, ELK1, DDIT3, ATF6B, CDKN1A, CDC6, CCND1, ZSCAN

Protein Size: 326

Molecular Weight: 37 kDa

Gene ID: 1021

NCBI Accession: [NM_001259](#), [NP_001250](#)

UniProt: [Q00534](#)

Pathways: [Cell Division Cycle, Mitotic G1-G1/S Phases](#)

Application Details

Application Notes: Optimal working dilutions should be determined experimentally by the investigator.

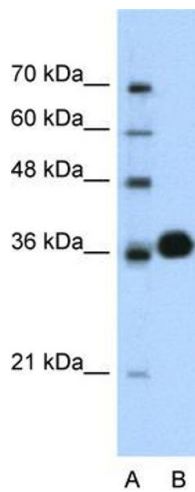
Comment: Antigen size: 326 AA

Restrictions: For Research Use only

Handling

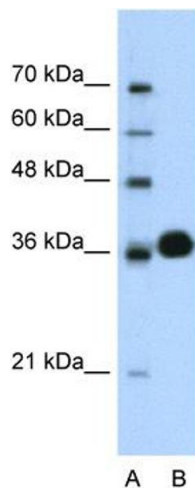
Format:	Liquid
Concentration:	Lot specific
Buffer:	Liquid. Purified antibody supplied in 1x PBS buffer with 0.09 % (w/v) sodium azide and 2 % sucrose.
Preservative:	Sodium azide
Precaution of Use:	This product contains Sodium azide: a POISONOUS AND HAZARDOUS SUBSTANCE which should be handled by trained staff only.
Handling Advice:	Avoid repeated freeze-thaw cycles.
Storage:	-20 °C
Storage Comment:	For short term use, store at 2-8°C up to 1 week. For long term storage, store at -20°C in small aliquots to prevent freeze-thaw cycles.

Images



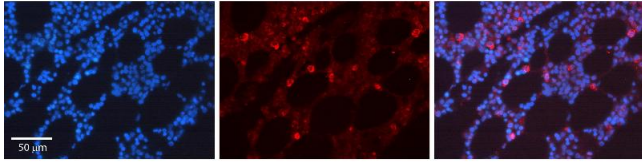
Western Blotting

Image 1. WB Suggested Anti-CDK6 Antibody Titration: 0.625ug/ml Positive Control: Jurkat cell lysate CDK6 is supported by BioGPS gene expression data to be expressed in Jurkat



Western Blotting

Image 2. WB Suggested Anti-CDK6 Antibody Titration: 0.625 µg/mL Positive Control: Jurkat cell lysate CDK6 is supported by BioGPS gene expression data to be expressed in Jurkat



Immunohistochemistry

Image 3. Rabbit Anti-CDK6 Antibody AV Formalin Fixed Paraffin Embedded Tissue: Human Bone Marrow Tissue
Observed Staining: Cytoplasm, Nucleus Primary Antibody Concentration: 1:100 Other Working Concentrations: N/A
Secondary Antibody: Donkey anti-Rabbit-Cy3 Secondary Antibody Concentration: 1:200 Magnification: 20X Exposure Time: 0.5 - 2.0 sec