

Datasheet for ABIN2792151
anti-CDK3 antibody (C-Term)[Go to Product page](#)

2 Images

Overview

Quantity:	100 µL
Target:	CDK3
Binding Specificity:	C-Term
Reactivity:	Human, Mouse, Cow, Dog, Rabbit
Host:	Rabbit
Clonality:	Polyclonal
Conjugate:	This CDK3 antibody is un-conjugated
Application:	Western Blotting (WB)

Product Details

Immunogen:	The immunogen is a synthetic peptide directed towards the C terminal region of human CDK3
Sequence:	NLEPEGRDLL MQLLQYDPSQ RITAKTALAH PYFSSPEPSP AARQYVLQRF
Predicted Reactivity:	Cow: 81%, Dog: 86%, Human: 100%, Mouse: 93%, Rabbit: 87%
Characteristics:	This is a rabbit polyclonal antibody against CDK3. It was validated on Western Blot using a cell lysate as a positive control.
Purification:	Affinity Purified

Target Details

Target:	CDK3
Alternative Name:	CDK3 (CDK3 Products)

Target Details

Background:	<p>CDK3 is a member of the cyclin-dependent protein kinase family. The protein promotes entry into S phase, in part by activating members of the E2F family of transcription factors. The protein also associates with cyclin C and phosphorylates the retinoblastoma 1 protein to promote exit from G0. This gene encodes a member of the cyclin-dependent protein kinase family. The protein promotes entry into S phase, in part by activating members of the E2F family of transcription factors. The protein also associates with cyclin C and phosphorylates the retinoblastoma 1 protein to promote exit from G0. Publication Note: This RefSeq record includes a subset of the publications that are available for this gene. Please see the Entrez Gene record to access additional publications.</p> <p>Alias Symbols: -</p> <p>Protein Interaction Partner: CDKN1A, STIP1, SKP2, SKP1, EEF1A2, CKS1B, CDKN1B, CDK3, CCNE1, CCNA2, STK4, STK3, CDK5, CDK2, RB1, CCNC, CCNE2, UBC, PPARA, HSP90AA1, APP, COPS5, COPS6, CUL1, ARRB2, CDK5R1, NEDD4L, EIF2AK2, CABLES1, CABLES2, KIR3DL1, CDC37, E2F3, E2F2, E2F1, CDKN3, TFDP1</p> <p>Protein Size: 305</p>
Molecular Weight:	35 kDa
Gene ID:	1018
NCBI Accession:	NM_001258 , NP_001249
UniProt:	Q00526
Pathways:	Cell Division Cycle

Application Details

Application Notes:	Optimal working dilutions should be determined experimentally by the investigator.
Comment:	Antigen size: 305 AA
Restrictions:	For Research Use only

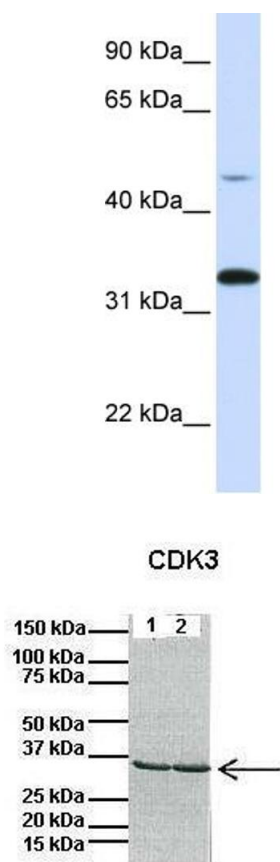
Handling

Format:	Liquid
Concentration:	Lot specific
Buffer:	Liquid. Purified antibody supplied in 1x PBS buffer with 0.09 % (w/v) sodium azide and 2 % sucrose.

Handling

Preservative:	Sodium azide
Precaution of Use:	This product contains Sodium azide: a POISONOUS AND HAZARDOUS SUBSTANCE which should be handled by trained staff only.
Handling Advice:	Avoid repeated freeze-thaw cycles.
Storage:	-20 °C
Storage Comment:	For short term use, store at 2-8°C up to 1 week. For long term storage, store at -20°C in small aliquots to prevent freeze-thaw cycles.

Images



Western Blotting

Image 1. WB Suggested Anti-CDK3 Antibody Titration: 0.2-1 ug/ml ELISA Titer: 1:62500 Positive Control: Hela cell lysate

Western Blotting

Image 2. Lanes: 1: 40ug mouse heart lysate, 2: 40ug mouse heart lysate Primary Antibody Dilution: 1:1000 Secondary Antibody: Anti-rabbit HRP Secondary Antibody Dilution: 1:10000 Gene Name: CDK3 Submitted by: Anonymous

See Immunoblot 3 Data and customer Feedback for more Information