

Datasheet for ABIN2792163
anti-Cyclin G2 antibody (N-Term)

2 Images

[Go to Product page](#)

Overview

Quantity:	100 µL
Target:	Cyclin G2 (CCNG2)
Binding Specificity:	N-Term
Reactivity:	Human, Mouse, Rat, Cow, Dog
Host:	Rabbit
Clonality:	Polyclonal
Conjugate:	This Cyclin G2 antibody is un-conjugated
Application:	Western Blotting (WB)

Product Details

Immunogen:	The immunogen is a synthetic peptide directed towards the N terminal region of human CCNG2
Sequence:	MKDLGAEHLA GHEGVQLLGL LNVYLEQEER FQPREKGLSL IEATPENDNT
Predicted Reactivity:	Cow: 91%, Dog: 91%, Human: 100%, Mouse: 83%, Rat: 83%
Characteristics:	This is a rabbit polyclonal antibody against CCNG2. It was validated on Western Blot using a cell lysate as a positive control.
Purification:	Protein A purified

Target Details

Target:	Cyclin G2 (CCNG2)
Alternative Name:	CCNG2 (CCNG2 Products)

Target Details

Background:	<p>The eukaryotic cell cycle is governed by cyclin-dependent protein kinases (CDKs) whose activities are regulated by cyclins and CDK inhibitors. The 8 species of cyclins reported in mammals, cyclins A through H, share a conserved amino acid sequence of about 90 residues called the cyclin box. The amino acid sequence of cyclin G is well conserved among mammals. The nucleotide sequence of cyclin G1 and cyclin G2 are 53 % identical. Unlike cyclin G1, cyclin G2 contains a C-terminal PEST protein destabilization motif, suggesting that cyclin G2 expression is tightly regulated through the cell cycle.</p> <p>Protein Interaction Partner: EFHC2, FAM208B, NRIP2, UBC, SKP2, SKP1, PPP2CA, PPP2R4, PPP2R5C, PPP2R5B,</p> <p>Protein Size: 344</p>
Molecular Weight:	39 kDa
Gene ID:	901
NCBI Accession:	NM_004354 , NP_004345
UniProt:	Q16589

Application Details

Application Notes:	Optimal working dilutions should be determined experimentally by the investigator.
Comment:	Antigen size: 344 AA
Restrictions:	For Research Use only

Handling

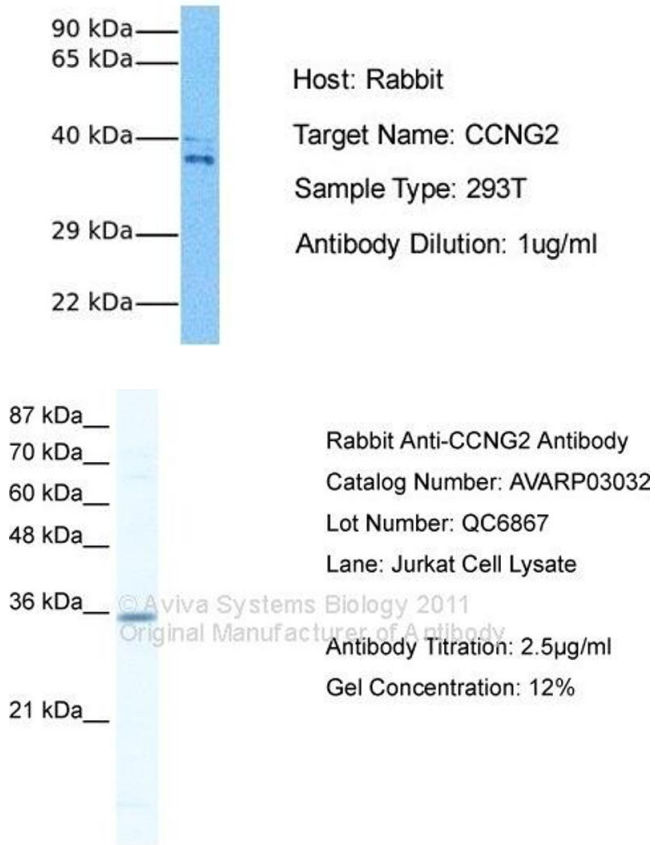
Format:	Liquid
Concentration:	Lot specific
Buffer:	Liquid. Purified antibody supplied in 1x PBS buffer with 0.09 % (w/v) sodium azide and 2 % sucrose.
Preservative:	Sodium azide
Precaution of Use:	This product contains Sodium azide: a POISONOUS AND HAZARDOUS SUBSTANCE which should be handled by trained staff only.
Handling Advice:	Avoid repeated freeze-thaw cycles.
Storage:	-20 °C

Handling

Storage Comment: For short term use, store at 2-8°C up to 1 week. For long term storage, store at -20°C in small aliquots to prevent freeze-thaw cycles.

Images

CCNG2



Western Blotting

Image 1. Host: Rabbit Target Name: CCNG2 Sample Tissue: Human 293T Antibody Dilution: 1.0ug/ml

Western Blotting

Image 2. WB Suggested Anti-CCNG2 Antibody Titration: 2.5ug/ml ELISA Titer: 1:312500 Positive Control: Jurkat cell lysate