

Datasheet for ABIN2792171
anti-RBX1 antibody (Middle Region)[1 Image](#)[1 Publication](#)[Go to Product page](#)

Overview

Quantity:	100 µL
Target:	RBX1
Binding Specificity:	Middle Region
Reactivity:	Human, Mouse, Rat, Cow, Dog, Zebrafish (Danio rerio), Guinea Pig
Host:	Rabbit
Clonality:	Polyclonal
Conjugate:	This RBX1 antibody is un-conjugated
Application:	Western Blotting (WB)

Product Details

Immunogen:	The immunogen is a synthetic peptide directed towards the middle region of human RBX1
Sequence:	NQASATSEEC TVAWGVCNHA FHFHCISRWL KTRQVCPLDN REWEFQKYGH
Predicted Reactivity:	Cow: 100%, Dog: 100%, Guinea Pig: 100%, Human: 100%, Mouse: 100%, Rat: 100%, Zebrafish: 100%
Characteristics:	This is a rabbit polyclonal antibody against RBX1. It was validated on Western Blot using a cell lysate as a positive control.
Purification:	Protein A purified

Target Details

Target:	RBX1
---------	------

Target Details

Alternative Name:	RBX1 (RBX1 Products)
Background:	<p>ROC1 encodes an evolutionarily conserved protein that interacts with cullins. The protein plays a unique role in the ubiquitination reaction by heterodimerizing with cullin-1 to catalyze ubiquitin polymerization. It also may be involved in the regulation of protein turn-over.</p> <p>Alias Symbols: ROC1, RNF75, BA554C12.1</p> <p>Protein Interaction Partner: CDT1, CDC34, KEAP1, UBE2L6, UBE2M, CUL1, CUL3, CUL4B, UBE2D3, UBE2D2, UBE2D1, DAB2IP, UBC, TP53, PRAME, DCUN1D1, CUL2, DCUN1D3, MAP4K1, VHL, NEDD4, MTSS1, VRK2, HIST1H4A, GFPT1, CTNNB1, CCNE1, DCUN1D5, FBXL5, RHOBTB3, SAMHD1, UBC12, FBXL15, UBE2R2, SERTAD</p> <p>Protein Size: 108</p>
Molecular Weight:	12 kDa
Gene ID:	9978
NCBI Accession:	NM_014248 , NP_055063
UniProt:	P62877
Pathways:	Cell Division Cycle , M Phase , SARS-CoV-2 Protein Interactome

Application Details

Application Notes:	Optimal working dilutions should be determined experimentally by the investigator.
Comment:	Antigen size: 108 AA
Restrictions:	For Research Use only

Handling

Format:	Liquid
Concentration:	Lot specific
Buffer:	Liquid. Purified antibody supplied in 1x PBS buffer with 0.09 % (w/v) sodium azide and 2 % sucrose.
Preservative:	Sodium azide
Precaution of Use:	This product contains Sodium azide: a POISONOUS AND HAZARDOUS SUBSTANCE which should be handled by trained staff only.
Handling Advice:	Avoid repeated freeze-thaw cycles.

Handling

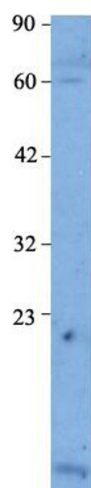
Storage: -20 °C

Storage Comment: For short term use, store at 2-8°C up to 1 week. For long term storage, store at -20°C in small aliquots to prevent freeze-thaw cycles.

Publications

Product cited in: Reid, van Roon-Mom, Wood, Rees, Owen, Faull, Dragunow, Snell: "TBP, a polyglutamine tract containing protein, accumulates in Alzheimer's disease." in: **Brain research. Molecular brain research**, Vol. 125, Issue 1-2, pp. 120-8, (2004) ([PubMed](#)).

Images



Host: Rabbit
Target Name: RBX1
Sample Type: HepG2
Antibody Dilution: 1 ug/ml

Western Blotting

Image 1. Host: Rabbit Target Name: RBX1 Sample Type: Human HepG2 Antibody Dilution: 1.0 ug/ml