

Datasheet for ABIN2792207  
**anti-SERPINH1 antibody (C-Term)**

## 5 Images

[Go to Product page](#)

## Overview

Quantity:	100 µL
Target:	SERPINH1
Binding Specificity:	C-Term
Reactivity:	Human, Rat, Mouse, Dog, Pig, Horse
Host:	Rabbit
Clonality:	Polyclonal
Conjugate:	This SERPINH1 antibody is un-conjugated
Application:	Western Blotting (WB), Immunoprecipitation (IP)

## Product Details

Immunogen:	The immunogen is a synthetic peptide directed towards the C terminal region of human SERPINH1
Sequence:	DIYGREELRS PKLFYADHPF IFLVRDTQSG SLLFIGRLVR LKGDKMRDEL
Predicted Reactivity:	Dog: 91%, Horse: 91%, Human: 91%, Mouse: 91%, Pig: 91%, Rat: 91%
Characteristics:	This is a rabbit polyclonal antibody against SERPINH1. It was validated on Western Blot using a cell lysate as a positive control.
Purification:	Protein A purified

## Target Details

Target:	SERPINH1
---------	----------

## Target Details

Alternative Name:	SERPINH1 ( <a href="#">SERPINH1 Products</a> )
Target Type:	Viral Protein
Background:	<p>Serine (or cysteine) proteinase inhibitor, clade H (heat shock protein 47), member 1, (collagen binding protein 1)</p> <p>Alias Symbols: CBP1, CBP2, OI10, gp46, AsTP3, HSP47, PIG14, PPR0M, RA-A47, SERPINH2</p> <p>Protein Interaction Partner: STAU1, AARSD1, NEDD8, MDM2, SUMO1, VIM, ATXN10, ADRB2, IQCB1, UBC, MYC, ATF2, METTL23, env, OS9, ESR1, TOM1L2, HNRNPA1L2, MPLKIP, AGMAT, NABP2, SUGP1, YTHDF1, TMED9, ZFR, TBL2, TPX2, AHCYL1, SEC23A, TIMM44, TOMM40, LANCL1, PDIA6, ZC3H11A, SEC24C, SEC22B,</p> <p>Protein Size: 418</p>
Molecular Weight:	46 kDa
Gene ID:	871
NCBI Accession:	<a href="#">NM_001235</a> , <a href="#">NP_001226</a>
UniProt:	<a href="#">P50454</a>

## Application Details

Application Notes:	Optimal working dilutions should be determined experimentally by the investigator.
Comment:	Antigen size: 418 AA
Restrictions:	For Research Use only

## Handling

Format:	Liquid
Concentration:	Lot specific
Buffer:	Liquid. Purified antibody supplied in 1x PBS buffer with 0.09 % (w/v) sodium azide and 2 % sucrose.
Preservative:	Sodium azide
Precaution of Use:	This product contains Sodium azide: a POISONOUS AND HAZARDOUS SUBSTANCE which should be handled by trained staff only.
Handling Advice:	Avoid repeated freeze-thaw cycles.
Storage:	-20 °C

Handling

Storage Comment: For short term use, store at 2-8°C up to 1 week. For long term storage, store at -20°C in small aliquots to prevent freeze-thaw cycles.

Images

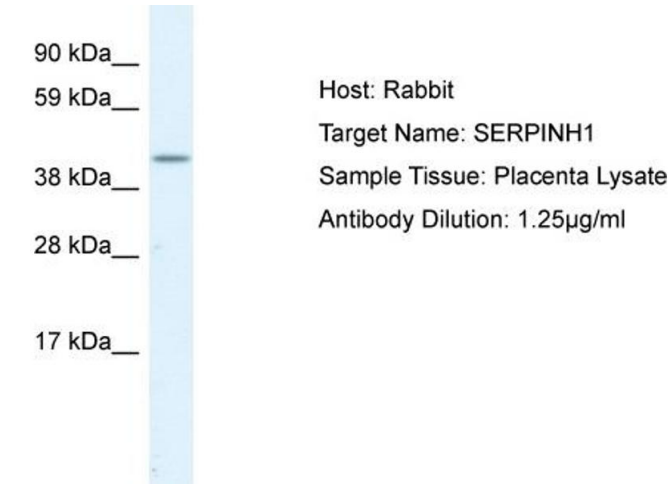
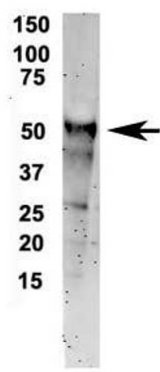


Image 1.

SERPINH1



Western Blotting  
Image 2. IP Suggested Anti-SERPINH1 Antibody  
Positive Control: NT2 CELL/BRAIN TISSUE

See Other Application 1 Data and Customer Feedback tab for more information.



Western Blotting  
Image 3. WB Suggested Anti-SERPINH1  
Antibody Titration: 1.25 µg/mL  
Positive Control: Placenta cell lysate

Please check the [product details page](#) for more images. Overall 5 images are available for ABIN2792207.