

Datasheet for ABIN2792226
anti-SREBF2 antibody (Middle Region)[Go to Product page](#)

2 Images

Overview

Quantity:	100 µL
Target:	SREBF2
Binding Specificity:	Middle Region
Reactivity:	Human, Rat, Dog, Cow, Guinea Pig, Horse
Host:	Rabbit
Clonality:	Polyclonal
Conjugate:	This SREBF2 antibody is un-conjugated
Application:	Western Blotting (WB)

Product Details

Immunogen:	The immunogen is a synthetic peptide directed towards the middle region of human SREBF2
Sequence:	PASDSGSQAG FSPYSIDSEP GSPLLDDAKV KDEPDSPPVA LGMVDRSRIL
Predicted Reactivity:	Cow: 100%, Dog: 100%, Guinea Pig: 100%, Horse: 100%, Human: 100%, Rat: 100%
Characteristics:	This is a rabbit polyclonal antibody against SREBF2. It was validated on Western Blot using a cell lysate as a positive control.
Purification:	Affinity Purified

Target Details

Target:	SREBF2
Alternative Name:	SREBF2 (SREBF2 Products)

Target Details

Background:	<p>SREBF2 is a ubiquitously expressed transcription factor that controls cholesterol homeostasis by stimulating transcription of sterol-regulated genes. This gene encodes a ubiquitously expressed transcription factor that controls cholesterol homeostasis by stimulating transcription of sterol-regulated genes. The encoded protein contains a basic helix-loop-helix-leucine zipper (bHLH-Zip) domain. Publication Note: This RefSeq record includes a subset of the publications that are available for this gene. Please see the Entrez Gene record to access additional publications.</p> <p>Alias Symbols: SREBP2, bHLHd2</p> <p>Protein Interaction Partner: UBC, ERLIN2, MRPS6, NAE1, MAPK3, MAPK1, PARK7, SCAP, SREBF2, SREBF1, NPAT, HINFP, TRRAP, SUMO2, RNF139, SMAD3, HNF4A, ATF6, KLF13, LZTR1, ABLIM2, ATF7IP, ZDHHC17, COPS5, OS9, PIAS3, CASP8AP2, ARHGEF1, PIAS2, SLC4A4, PIAS1, ZYX, ZMYM2, UBE2I, TTC1, SPTBN1,</p> <p>Protein Size: 1141</p>
Molecular Weight:	124 kDa
Gene ID:	6721
NCBI Accession:	NM_004599 , NP_004590
UniProt:	Q12772
Pathways:	Regulation of Lipid Metabolism by PPARalpha

Application Details

Application Notes:	Optimal working dilutions should be determined experimentally by the investigator.
Comment:	Antigen size: 1141 AA
Restrictions:	For Research Use only

Handling

Format:	Liquid
Concentration:	Lot specific
Buffer:	Liquid. Purified antibody supplied in 1x PBS buffer with 0.09 % (w/v) sodium azide and 2 % sucrose.
Preservative:	Sodium azide
Precaution of Use:	This product contains Sodium azide: a POISONOUS AND HAZARDOUS SUBSTANCE which

Handling

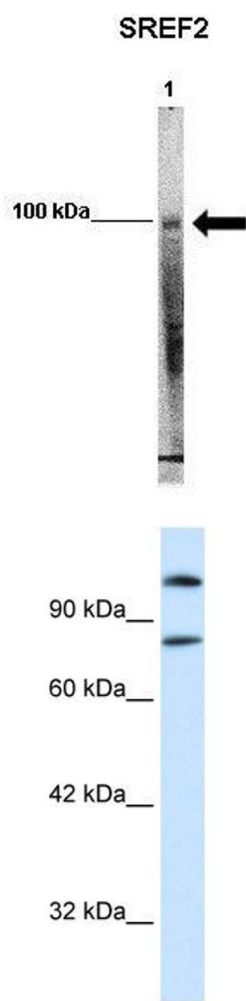
should be handled by trained staff only.

Handling Advice: Avoid repeated freeze-thaw cycles.

Storage: -20 °C

Storage Comment: For short term use, store at 2-8°C up to 1 week. For long term storage, store at -20°C in small aliquots to prevent freeze-thaw cycles.

Images



Western Blotting

Image 1. WB Suggested Anti-SREBF2 Antibody Positive Control: Lane 1: 50ug mouse glomerular endothelial lysate
Primary Antibody Dilution : 1:1000 Secondary Antibody : Anti-rabbit-HRP Secondary Antibody Dilution : 1:5000
Submitted by: Xiaoxin Wang, UC Denver

Western Blotting

Image 2. WB Suggested Anti-SREBF2 Antibody Titration: 0.2-1 ug/ml ELISA Titer: 1:62500 Positive Control: Raji cell lysate SREBF2 is strongly supported by BioGPS gene expression data to be expressed in Human Raji cells