

Datasheet for ABIN2792231  
**anti-BCL2A1 antibody (C-Term)**



[Go to Product page](#)

1 Image

## Overview

Quantity:	100 µL
Target:	BCL2A1
Binding Specificity:	C-Term
Reactivity:	Rat, Pig, Dog
Host:	Rabbit
Clonality:	Polyclonal
Conjugate:	This BCL2A1 antibody is un-conjugated
Application:	Western Blotting (WB)

## Product Details

Immunogen:	The immunogen is a synthetic peptide directed towards the C terminal region of human BCL2A1
Sequence:	FIMNNTGEWI RQNGGWENG FVKKFEPKSGW MTFLEVTGKI CEMLSLLKQY
Predicted Reactivity:	Dog: 90%, Pig: 85%, Rat: 78%
Characteristics:	This is a rabbit polyclonal antibody against BCL2A1. It was validated on Western Blot using a cell lysate as a positive control.
Purification:	Affinity Purified

## Target Details

Target:	BCL2A1
---------	--------

## Target Details

Alternative Name:	BCL2A1 ( <a href="#">BCL2A1 Products</a> )
Background:	<p>BCL2A1s a member of the BCL-2 protein family. The proteins of this family form hetero- or homodimers and act as anti- and pro-apoptotic regulators that are involved in a wide variety of cellular activities such as embryonic development, homeostasis and tumorigenesis. The protein encoded by this gene is able to reduce the release of pro-apoptotic cytochrome c from mitochondria and block caspase activation. This gene is a direct transcription target of NF-kappa B in response to inflammatory mediators, and has been shown to be up-regulated by different extracellular signals, such as granulocyte-macrophage colony-stimulating factor (GM-CSF), CD40, phorbol ester and inflammatory cytokine TNF and IL-1, which suggests a cytoprotective function that is essential for lymphocyte activation as well as cell survival.</p> <p>Alias Symbols: GRS, BFL1, ACC-1, ACC-2, HBPA1, BCL2L5</p> <p>Protein Interaction Partner: FAM9B, NR4A1, BIK, BAK1, APP, HAT1, BBC3, PMAIP1, BOK, BCL2L11, HRK, BAD, BID, BAX, GRB2, BMF,</p> <p>Protein Size: 175</p>
Molecular Weight:	20 kDa
Gene ID:	597
NCBI Accession:	<a href="#">NM_004049</a> , <a href="#">NP_004040</a>
UniProt:	<a href="#">Q16548</a>

## Application Details

Application Notes:	Optimal working dilutions should be determined experimentally by the investigator.
Comment:	Antigen size: 175 AA
Restrictions:	For Research Use only

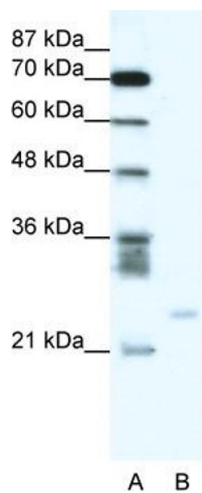
## Handling

Format:	Liquid
Concentration:	Lot specific
Buffer:	Liquid. Purified antibody supplied in 1x PBS buffer with 0.09 % (w/v) sodium azide and 2 % sucrose.
Preservative:	Sodium azide
Precaution of Use:	This product contains Sodium azide: a POISONOUS AND HAZARDOUS SUBSTANCE which

Handling

	should be handled by trained staff only.
Handling Advice:	Avoid repeated freeze-thaw cycles.
Storage:	-20 °C
Storage Comment:	For short term use, store at 2-8°C up to 1 week. For long term storage, store at -20°C in small aliquots to prevent freeze-thaw cycles.

Images



**Western Blotting**

**Image 1.** WB Suggested Anti-BCL2A1 Antibody Titration:  
0.2-1 ug/ml Positive Control: Jurkat cell lysate