

Datasheet for ABIN2792233
anti-SREBF1 antibody (Middle Region)[Go to Product page](#)

4 Images

Overview

Quantity:	100 µL
Target:	SREBF1
Binding Specificity:	Middle Region
Reactivity:	Human, Rat, Mouse, Cow, Goat, Horse
Host:	Rabbit
Clonality:	Polyclonal
Conjugate:	This SREBF1 antibody is un-conjugated
Application:	Western Blotting (WB), Immunohistochemistry (IHC)

Product Details

Immunogen:	The immunogen is a synthetic peptide directed towards the middle region of human SREBF1
Sequence:	DAGSPFQSSP LSLGSRGSGS GGSGDSEPD SPVFEDSKAK PEQRPSLHSR
Predicted Reactivity:	Cow: 88%, Goat: 88%, Horse: 80%, Human: 82%, Mouse: 93%, Rat: 100%
Characteristics:	This is a rabbit polyclonal antibody against SREBF1. It was validated on Western Blot and immunohistochemistry.
Purification:	Affinity Purified

Target Details

Target:	SREBF1
Alternative Name:	SREBF1 (SREBF1 Products)

Target Details

Background:	<p>SREBF1 is a transcription factor that binds to the sterol regulatory element-1 (SRE1), which is a decamer flanking the low density lipoprotein receptor gene and some genes involved in sterol biosynthesis. The protein is synthesized as a precursor that is attached to the nuclear membrane and endoplasmic reticulum. Following cleavage, the mature protein translocates to the nucleus and activates transcription by binding to the SRE1. Sterols inhibit the cleavage of the precursor, and the mature nuclear form is rapidly catabolized, thereby reducing transcription. The protein is a member of the basic helix-loop-helix-leucine zipper (bHLH-Zip) transcription factor family. This gene encodes a transcription factor that binds to the sterol regulatory element-1 (SRE1), which is a decamer flanking the low density lipoprotein receptor gene and some genes involved in sterol biosynthesis. The protein is synthesized as a precursor that is attached to the nuclear membrane and endoplasmic reticulum. Following cleavage, the mature protein translocates to the nucleus and activates transcription by binding to the SRE1. Sterols inhibit the cleavage of the precursor, and the mature nuclear form is rapidly catabolized, thereby reducing transcription. The protein is a member of the basic helix-loop-helix-leucine zipper (bHLH-Zip) transcription factor family. This gene is located within the Smith-Magenis syndrome region on chromosome 17. Two transcript variants encoding different isoforms have been found for this gene.</p> <p>Alias Symbols: SREBP1, bHLHd1, SREBP-1c</p> <p>Protein Interaction Partner: UBC, ERLIN2, FBXW7, SMARCD3, HSP90AA1, SUMO1, ATXN1L, INSIG2, SCAP, ATXN1, LMNA, INSIG1, EGF, SREBF2, SREBF1, ZBTB7A, ZBTB7C, SUMO2, MED6, MED13, MED12, MED24, MED26, MED17, MED23, MED14, USF1, MED1, GSK3B, CREBBP, CDK8, MED25, MED15, MED7, MED21, SIRT1,</p> <p>Protein Size: 1177</p>
-------------	---

Molecular Weight:	125 kDa
Gene ID:	6720
NCBI Accession:	NM_001005291 , NP_001005291
UniProt:	P36956
Pathways:	AMPK Signaling , Caspase Cascade in Apoptosis , Negative Regulation of Hormone Secretion , Regulation of Lipid Metabolism by PPARalpha

Application Details

Application Notes:	Optimal working dilutions should be determined experimentally by the investigator.
Comment:	Antigen size: 1177 AA

Application Details

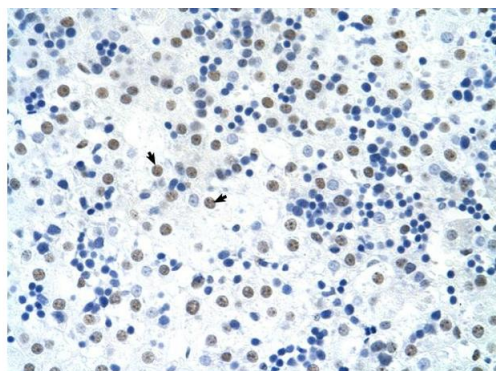
Restrictions:	For Research Use only
Handling	
Format:	Liquid
Concentration:	Lot specific
Buffer:	Liquid. Purified antibody supplied in 1x PBS buffer with 0.09 % (w/v) sodium azide and 2 % sucrose.
Preservative:	Sodium azide
Precaution of Use:	This product contains Sodium azide: a POISONOUS AND HAZARDOUS SUBSTANCE which should be handled by trained staff only.
Handling Advice:	Avoid repeated freeze-thaw cycles.
Storage:	-20 °C
Storage Comment:	For short term use, store at 2-8°C up to 1 week. For long term storage, store at -20°C in small aliquots to prevent freeze-thaw cycles.

Images



Western Blotting

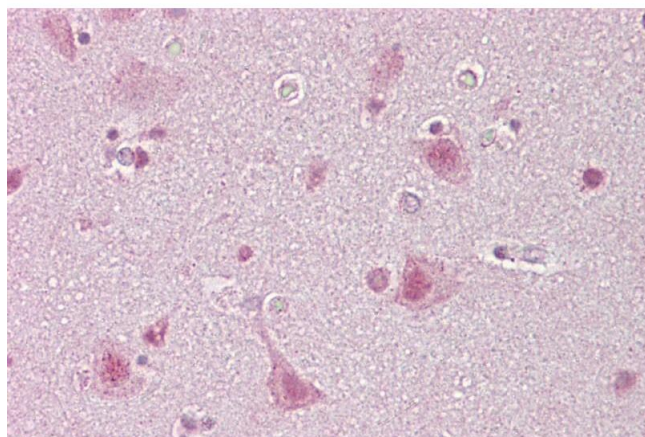
Image 1. WB Suggested Anti-SREBF1 Antibody Titration: 0.2-1 ug/ml ELISA Titer: 1:62500 Positive Control: Transfected 293T



Rabbit Anti-SREBF1 Antibody
Catalog Number: AVARP09051
Lot Number: QC6921
Paraffin Embedded Tissue: Human Liver
Cells with Positive label: Hepatocytes (Indicated with Arrows)
Antibody Concentration: 16.0 µg/ml
Magnification: 400X

Immunohistochemistry

Image 2. Human Liver



Immunohistochemistry

Image 3.

Please check the [product details page](#) for more images. Overall 4 images are available for ABIN2792233.