

Datasheet for ABIN2792235

anti-SFRP1 antibody (Middle Region)[Go to Product page](#)**1** Image**1** Publication

Overview

Quantity:	100 µL
Target:	SFRP1
Binding Specificity:	Middle Region
Reactivity:	Human, Mouse, Rat, Cow, Dog, Horse, Guinea Pig
Host:	Rabbit
Clonality:	Polyclonal
Conjugate:	This SFRP1 antibody is un-conjugated
Application:	Western Blotting (WB)

Product Details

Immunogen:	The immunogen is a synthetic peptide directed towards the middle region of human SFRP1
Sequence:	HQLDNLSHHF LIMGRKVKSQ YLLTAIHKWD KKNKEFKNFM KKMKNHECPT
Predicted Reactivity:	Cow: 93%, Dog: 100%, Guinea Pig: 100%, Horse: 100%, Human: 100%, Mouse: 100%, Rat: 100%
Characteristics:	This is a rabbit polyclonal antibody against SFRP1. It was validated on Western Blot using a cell lysate as a positive control.
Purification:	Protein A purified

Target Details

Target:	SFRP1
Alternative Name:	SFRP1 (SFRP1 Products)

Target Details

Background:	Secreted frizzled-related protein 1 (SFRP1) is a member of the SFRP family that contains a cysteine-rich domain homologous to the putative Wnt-binding site of Frizzled proteins. SFRPs act as soluble modulators of Wnt signaling. SFRP1 may be involved in de Alias Symbols: FRP, FRP1, FrzA, FRP-1, SARP2 Protein Interaction Partner: KIAA1522, PPP1CC, PPP1CA, WNT4, FZD6, WNT1, WNT2, Protein Size: 314
Molecular Weight:	35 kDa
Gene ID:	6422
NCBI Accession:	NM_003012 , NP_003003
UniProt:	Q8N474
Pathways:	WNT Signaling , Intracellular Steroid Hormone Receptor Signaling Pathway , Negative Regulation of Hormone Secretion , Regulation of Intracellular Steroid Hormone Receptor Signaling , Stem Cell Maintenance , Tube Formation , Positive Regulation of fat Cell Differentiation

Application Details

Application Notes:	Optimal working dilutions should be determined experimentally by the investigator.
Comment:	Antigen size: 314 AA
Restrictions:	For Research Use only

Handling

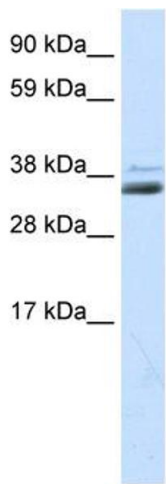
Format:	Liquid
Concentration:	Lot specific
Buffer:	Liquid. Purified antibody supplied in 1x PBS buffer with 0.09 % (w/v) sodium azide and 2 % sucrose.
Preservative:	Sodium azide
Precaution of Use:	This product contains Sodium azide: a POISONOUS AND HAZARDOUS SUBSTANCE which should be handled by trained staff only.
Handling Advice:	Avoid repeated freeze-thaw cycles.
Storage:	-20 °C
Storage Comment:	For short term use, store at 2-8°C up to 1 week. For long term storage, store at -20°C in small

aliquots to prevent freeze-thaw cycles.

Publications

Product cited in: Qiu, Xu, Zhou, Shi, Ma, Li, Li: "Involvement of genetic instability in the downregulation of sFRP1 in Chinese patients with hepatocellular carcinoma." in: **Anatomical record (Hoboken, N.J. : 2007)**, Vol. 293, Issue 12, pp. 2020-6, (2010) ([PubMed](#)).

Images



Western Blotting

Image 1. WB Suggested Anti-SFRP1 Antibody Titration: 0.3ug/ml ELISA Titer: 1:62500 Positive Control: Human kidney