

Datasheet for ABIN2792237
anti-PLEKHF1 antibody (C-Term)[Go to Product page](#)

1 Image

Overview

Quantity:	100 µL
Target:	PLEKHF1
Binding Specificity:	C-Term
Reactivity:	Human, Mouse, Rat, Cow, Dog, Saccharomyces cerevisiae
Host:	Rabbit
Clonality:	Polyclonal
Conjugate:	This PLEKHF1 antibody is un-conjugated
Application:	Western Blotting (WB)

Product Details

Immunogen:	The immunogen is a synthetic peptide directed towards the C terminal region of human APPD
Sequence:	QPAHLARPIC GASSGDDDDDS DEDKEGSRDG DWPSSVEFYA SGVAWSAFHS
Predicted Reactivity:	Cow: 92%, Dog: 92%, Human: 100%, Mouse: 92%, Rat: 92%, Yeast: 100%
Characteristics:	This is a rabbit polyclonal antibody against APPD. It was validated on Western Blot using a cell lysate as a positive control.
Purification:	Protein A purified

Target Details

Target:	PLEKHF1
Alternative Name:	APPD (PLEKHF1 Products)

Target Details

Background: APPD (Apoptosis-inducing protein D, phafin 1) is predicted through gene annotation and contains pleckstrin homology domain. It may binds to two Zn⁺⁺ ions through its FYVE zinc finger domain. Biological function of this protein has not been clearly mapped yet.

Alias Symbols: APPD, PHAFIN1, ZFYVE15

Protein Interaction Partner: L3MBTL3, UBC, KIAA1279, TNNT1,

Protein Size: 279

Molecular Weight: 31 kDa

Gene ID: 79156

NCBI Accession: [NM_024310](#), [NP_077286](#)

UniProt: [Q96K11](#)

Application Details

Application Notes: Optimal working dilutions should be determined experimentally by the investigator.

Comment: Antigen size: 279 AA

Restrictions: For Research Use only

Handling

Format: Liquid

Concentration: Lot specific

Buffer: Liquid. Purified antibody supplied in 1x PBS buffer with 0.09 % (w/v) sodium azide and 2 % sucrose.

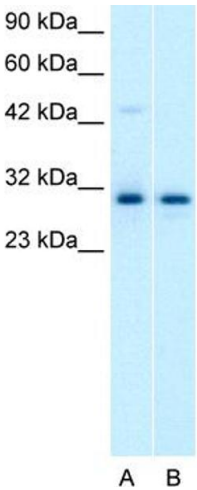
Preservative: Sodium azide

Precaution of Use: This product contains Sodium azide: a POISONOUS AND HAZARDOUS SUBSTANCE which should be handled by trained staff only.

Handling Advice: Avoid repeated freeze-thaw cycles.

Storage: -20 °C

Storage Comment: For short term use, store at 2-8°C up to 1 week. For long term storage, store at -20°C in small aliquots to prevent freeze-thaw cycles.



Rabbit Anti- APPD Antibody
Catalog Number: AVARP 09055
Lot Number: QC0444
Lane: A. Jurkat Cell Lysate
B. HepG2 Cell Lysate

Antibody Titration: 1.0µg/ml
Gel Concentration: 12%

Western Blotting

Image 1. Host: Rabbit Target Name: APPD Sample Tissue:
Human Jurkat Whole cell Antibody Dilution: 1ug/ml