

Datasheet for ABIN2792255  
**anti-CHRND antibody (N-Term)**[Go to Product page](#)

## 2 Images

## Overview

Quantity:	100 µL
Target:	CHRND
Binding Specificity:	N-Term
Reactivity:	Human, Rat, Dog, Rabbit, Zebrafish (Danio rerio), Cow, Guinea Pig, Pig
Host:	Rabbit
Clonality:	Polyclonal
Conjugate:	This CHRND antibody is un-conjugated
Application:	Western Blotting (WB), Immunohistochemistry (IHC)

## Product Details

Immunogen:	The immunogen is a synthetic peptide directed towards the N terminal region of human CHRND
Sequence:	LTLGLLAALA VCGSWGLNEE ERLIRHLFQE KGYNKELRPV AHKEESVDVA
Predicted Reactivity:	Cow: 91%, Dog: 100%, Guinea Pig: 93%, Human: 100%, Pig: 100%, Rabbit: 86%, Rat: 85%, Zebrafish: 78%
Characteristics:	This is a rabbit polyclonal antibody against CHRND. It was validated on Western Blot and immunohistochemistry.
Purification:	Affinity Purified

## Target Details

Target:	CHRND
---------	-------

## Target Details

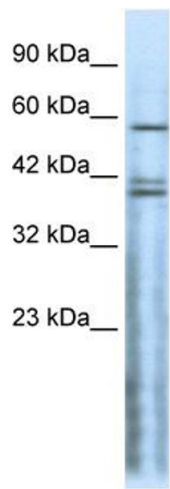
Alternative Name:	CHRND ( <a href="#">CHRND Products</a> )
Background:	<p>The acetylcholine receptor of muscle has 5 subunits of 4 different types: 2 alpha and 1 each of beta, gamma and delta subunits. After acetylcholine binding, the receptor undergoes an extensive conformation change that affects all subunits and leads to opening of an ion-conducting channel across the plasma membrane.</p> <p>Alias Symbols: ACHRD, CMS2A, FCCMS, SCCMS</p> <p>Protein Interaction Partner: GRB2, CHRNA1,</p> <p>Protein Size: 517</p>
Molecular Weight:	59 kDa
Gene ID:	1144
NCBI Accession:	<a href="#">NM_000751</a> , <a href="#">NP_000742</a>
UniProt:	<a href="#">Q07001</a>

## Application Details

Application Notes:	Optimal working dilutions should be determined experimentally by the investigator.
Comment:	Antigen size: 517 AA
Restrictions:	For Research Use only

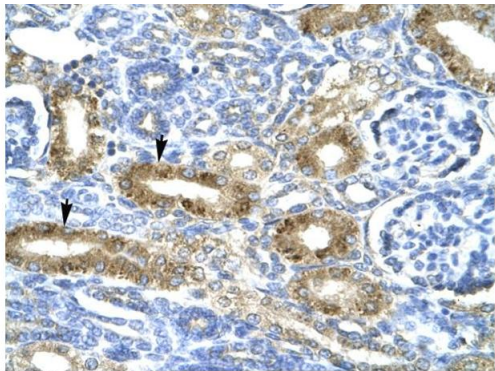
## Handling

Format:	Liquid
Concentration:	Lot specific
Buffer:	Liquid. Purified antibody supplied in 1x PBS buffer with 0.09 % (w/v) sodium azide and 2 % sucrose.
Preservative:	Sodium azide
Precaution of Use:	This product contains Sodium azide: a POISONOUS AND HAZARDOUS SUBSTANCE which should be handled by trained staff only.
Handling Advice:	Avoid repeated freeze-thaw cycles.
Storage:	-20 °C
Storage Comment:	For short term use, store at 2-8°C up to 1 week. For long term storage, store at -20°C in small aliquots to prevent freeze-thaw cycles.



### Western Blotting

**Image 1.** WB Suggested Anti-CHRND Antibody Titration: 0.2-1 ug/ml ELISA Titer: 1:312500 Positive Control: HepG2 cell lysate



Rabbit Anti-CHRND Antibody  
Catalog Number: AVARP13022  
Lot Number: QC0397  
Paraffin Embedded Tissue: Human Kidney  
Cells with Positive label: Epithelial cells of renal tubule (Indicated with Arrows)  
Antibody Concentration: 4.0-8.0 µg/ml  
Magnification: 400X

### Immunohistochemistry

**Image 2.** Human kidney