



[Go to Product page](#)

Datasheet for ABIN2792259

anti-GABRA2 antibody (Middle Region)

1 Image

2 Publications

Overview

Quantity:	100 µL
Target:	GABRA2
Binding Specificity:	Middle Region
Reactivity:	Human, Mouse, Rat, Dog, Cow, Rabbit, Horse
Host:	Rabbit
Clonality:	Polyclonal
Conjugate:	This GABRA2 antibody is un-conjugated
Application:	Western Blotting (WB)

Product Details

Immunogen:	The immunogen is a synthetic peptide directed towards the middle region of human GABRA2
Sequence:	PMDAHSCPLK FGSYAYTTSE VTYIWTYNAS DSVQVAPDGS RLNQYDLLGQ
Predicted Reactivity:	Cow: 100%, Dog: 100%, Horse: 100%, Human: 100%, Mouse: 100%, Rabbit: 100%, Rat: 100%
Characteristics:	This is a rabbit polyclonal antibody against GABRA2. It was validated on Western Blot using a cell lysate as a positive control.
Purification:	Protein A purified

Target Details

Target:	GABRA2
Alternative Name:	GABRA2 (GABRA2 Products)

Target Details

Background:	GABA, the major inhibitory neurotransmitter in the vertebrate brain, mediates neuronal inhibition by binding to the gaba/benzodiazepine receptor and opening an integral chloride channel. Protein Interaction Partner: UBQLN1, Protein Size: 451
Molecular Weight:	51 kDa
Gene ID:	2555
NCBI Accession:	NM_000807 , NP_000798
UniProt:	P47869

Application Details

Application Notes:	Optimal working dilutions should be determined experimentally by the investigator.
Comment:	Antigen size: 451 AA
Restrictions:	For Research Use only

Handling

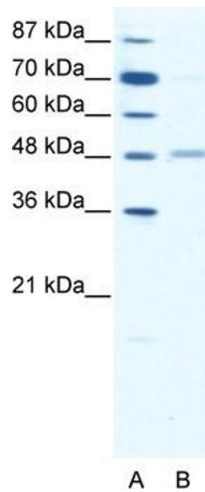
Format:	Liquid
Concentration:	Lot specific
Buffer:	Liquid. Purified antibody supplied in 1x PBS buffer with 0.09 % (w/v) sodium azide and 2 % sucrose.
Preservative:	Sodium azide
Precaution of Use:	This product contains Sodium azide: a POISONOUS AND HAZARDOUS SUBSTANCE which should be handled by trained staff only.
Handling Advice:	Avoid repeated freeze-thaw cycles.
Storage:	-20 °C
Storage Comment:	For short term use, store at 2-8°C up to 1 week. For long term storage, store at -20°C in small aliquots to prevent freeze-thaw cycles.

Publications

Product cited in:	Tashiro, Sumi, Uozumi, Shimizu, Nakamura: "B-Myb-dependent regulation of c-Myc expression by cytosolic phospholipase A2." in: The Journal of biological chemistry , Vol. 279, Issue 17, pp.
-------------------	--

17715-22, (2004) ([PubMed](#)).

Images



Western Blotting

Image 1. WB Suggested Anti-GABRA2 Antibody Titration:
1.25ug/ml ELISA Titer: 1:62500 Positive Control: HepG2 cell lysate