



Datasheet for ABIN2792274
anti-HTR2C antibody (N-Term)



[Go to Product page](#)

6 Images

Overview

Quantity:	100 µL
Target:	HTR2C
Binding Specificity:	N-Term
Reactivity:	Human, Mouse, Rat, Pig, Horse, Rabbit
Host:	Rabbit
Clonality:	Polyclonal
Conjugate:	This HTR2C antibody is un-conjugated
Application:	Western Blotting (WB)

Product Details

Immunogen:	The immunogen is a synthetic peptide directed towards the N terminal region of human HTR2C
Sequence:	SPVAAIVTDI FNTSDGGRFK FPDGVQNWPA LSIVIIIIMT IGGNILVIMA
Predicted Reactivity:	Horse: 100%, Human: 100%, Mouse: 86%, Pig: 100%, Rabbit: 100%, Rat: 85%
Characteristics:	This is a rabbit polyclonal antibody against HTR2C. It was validated on Western Blot using a cell lysate as a positive control.
Purification:	Protein A purified

Target Details

Target:	HTR2C
Alternative Name:	HTR2C (HTR2C Products)

Target Details

Background:	<p>This is one of the several different receptors for 5- hydroxytryptamine (serotonin), a biogenic hormone that functions as a neurotransmitter, a hormone, and a mitogen. This receptor mediates its action by association with g proteins that activate a phosphatidylinositol . calcium second messenger system.</p> <p>Alias Symbols: HTR1C, 5-HT2C, 5-HTR2C</p> <p>Protein Interaction Partner: SNTA1, CALM1, LIN7C, MPDZ, DLG4, APBA1, GNAQ, HTR2C, ARRB2,</p> <p>Protein Size: 458</p>
Molecular Weight:	52 kDa
Gene ID:	3358
NCBI Accession:	NM_000868 , NP_000859
UniProt:	P28335
Pathways:	Inositol Metabolic Process , Regulation of Carbohydrate Metabolic Process , Feeding Behaviour

Application Details

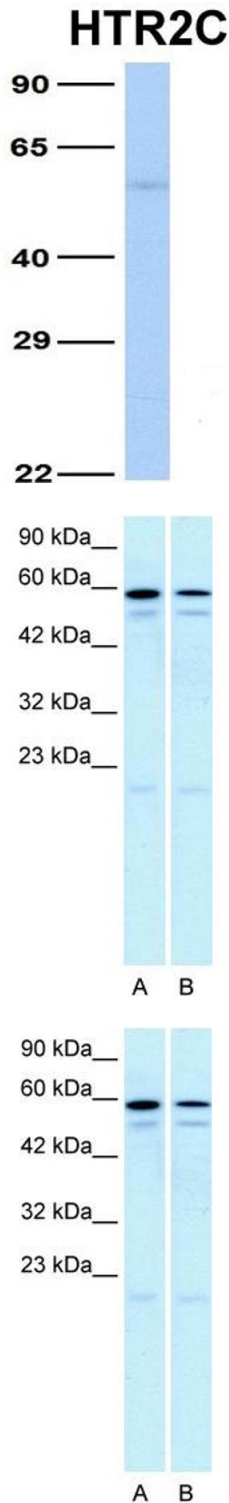
Application Notes:	Optimal working dilutions should be determined experimentally by the investigator.
Comment:	Antigen size: 458 AA
Restrictions:	For Research Use only

Handling

Format:	Liquid
Concentration:	Lot specific
Buffer:	Liquid. Purified antibody supplied in 1x PBS buffer with 0.09 % (w/v) sodium azide and 2 % sucrose.
Preservative:	Sodium azide
Precaution of Use:	This product contains Sodium azide: a POISONOUS AND HAZARDOUS SUBSTANCE which should be handled by trained staff only.
Handling Advice:	Avoid repeated freeze-thaw cycles.
Storage:	-20 °C
Storage Comment:	For short term use, store at 2-8°C up to 1 week. For long term storage, store at -20°C in small

aliquots to prevent freeze-thaw cycles.

Images



Western Blotting

Image 1. Host: Rabbit Target Name: HTR2C Sample Type: Human Fetal Lung Antibody Dilution: 1.0ug/ml

Western Blotting

Image 2. WB Suggested Anti-HTR2C Antibody Titration: 5.0ug/ml Positive Control: A:Daudi cell lysate B:Raji cell lysate

Western Blotting

Image 3. WB Suggested Anti-HTR2C Antibody Titration: 5.0 µg/mL Positive Control: Daudi cell lysate HTR2C is supported by BioGPS gene expression data to be expressed in Daudi

Please check the [product details page](#) for more images. Overall 6 images are available for ABIN2792274.