

Datasheet for ABIN2792284  
**anti-APBA1 antibody (N-Term)**

## 3 Images

[Go to Product page](#)

## Overview

Quantity:	100 µL
Target:	APBA1
Binding Specificity:	N-Term
Reactivity:	Human
Host:	Rabbit
Clonality:	Polyclonal
Application:	Western Blotting (WB), Immunohistochemistry (IHC)

## Product Details

Immunogen:	The immunogen is a synthetic peptide directed towards the N terminal region of human APBA1
Sequence:	PPQQQHYVGR HQRGRALEDL RAQLGQEEEE RGECLARSAS TESGFHNHTD
Predicted Reactivity:	Human: 100%
Characteristics:	This is a rabbit polyclonal antibody against APBA1. It was validated on Western Blot and immunohistochemistry.
Purification:	Affinity Purified

## Target Details

Target:	APBA1
Alternative Name:	APBA1 ( <a href="#">APBA1 Products</a> )
Background:	APBA1 is a member of the X11 protein family. It is a neuronal adaptor protein that interacts

## Target Details

with the Alzheimer's disease amyloid precursor protein (APP). It stabilises APP and inhibits production of proteolytic APP fragments including the A beta peptide that is deposited in the brains of Alzheimer's disease patients. APBA1 is believed to be involved in signal transduction processes. It is also regarded as a putative vesicular trafficking protein in the brain that can form a complex with the potential to couple synaptic vesicle exocytosis to neuronal cell adhesion.

Alias Symbols: D9S411E, MINT1, X11, X11A, X11ALPHA, LIN10

Protein Interaction Partner: STXBP1, CNTNAP4, NRXN1, CNTNAP3, KIF17, LIN7B, KCNJ12, CCS, CACNA1B, HTR2C, CASK, NOTCH1, STX1A, APP, PSEN1, LIN7A, PSEN2, LIN7C, DLG1, APBB1,

Protein Size: 837

Molecular Weight: 93 kDa

Gene ID: 320

NCBI Accession: [NM\\_001163](#)

UniProt: [Q02410](#)

Pathways: [Synaptic Vesicle Exocytosis](#), [Dicarboxylic Acid Transport](#)

## Application Details

Application Notes: Optimal working dilutions should be determined experimentally by the investigator.

Comment: Antigen size: 837 AA

Restrictions: For Research Use only

## Handling

Format: Liquid

Concentration: Lot specific

Buffer: Liquid. Purified antibody supplied in 1x PBS buffer with 0.09 % (w/v) sodium azide and 2 % sucrose.

Preservative: Sodium azide

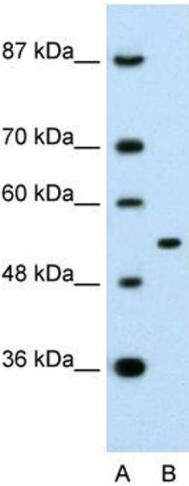
Precaution of Use: This product contains Sodium azide: a POISONOUS AND HAZARDOUS SUBSTANCE which should be handled by trained staff only.

Handling Advice: Avoid repeated freeze-thaw cycles.

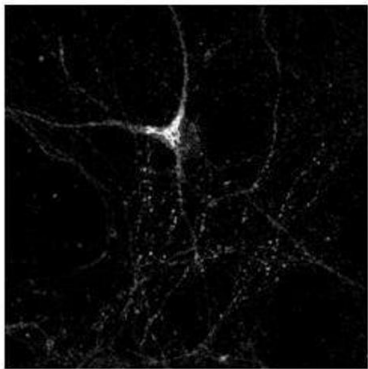
Handling

Storage:	-20 °C
Storage Comment:	For short term use, store at 2-8°C up to 1 week. For long term storage, store at -20°C in small aliquots to prevent freeze-thaw cycles.

Images

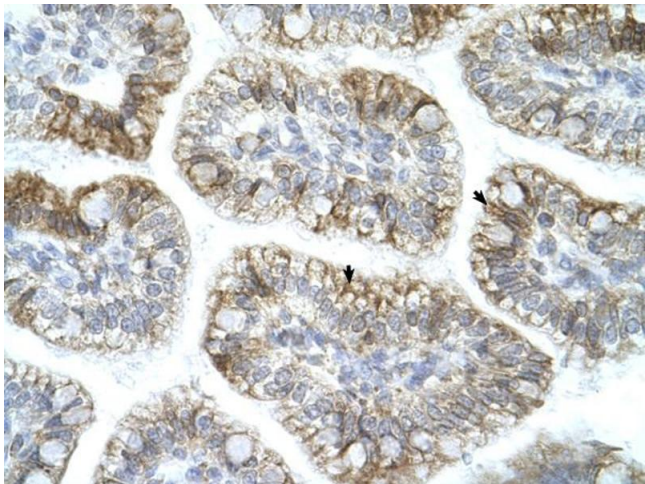


APBA1



White: APBA1

See IHC 2 Data and Customer Feedback for more Information



Western Blotting

**Image 1.** WB Suggested Anti-APBA1 Antibody Titration: 0.2-1 ug/ml Positive Control: Raji cell lysate APBA1 is supported by BioGPS gene expression data to be expressed in Raji

Immunohistochemistry

**Image 2.** Sample Type : Rat Hippocampal Neurons - 14DIV Primary Antibody Dilution : 1:200 Secondary Antibody : Anti-rabbit-Cy3 Secondary Antibody Dilution : 1:500 Color/Signal Descriptions : White: APBA1 Gene Name : APBA1 Submitted by : Dan Fowler - University of Oregon, Institute of Neuroscience

Immunohistochemistry

**Image 3.** Human Intestine