

Datasheet for ABIN2792290
anti-RAB8A antibody (Middle Region)

3 Images

[Go to Product page](#)

Overview

Quantity:	100 µL
Target:	RAB8A
Binding Specificity:	Middle Region
Reactivity:	Human, Mouse, Rat, Cow, Dog, Pig, Sheep, Zebrafish (Danio rerio)
Host:	Rabbit
Clonality:	Polyclonal
Conjugate:	This RAB8A antibody is un-conjugated
Application:	Western Blotting (WB)

Product Details

Immunogen:	The immunogen is a synthetic peptide directed towards the middle region of human RAB8A
Sequence:	GIKFMETSAK ANINVENAFF TLARDIKAKM DKKLEGNSPQ GSNQGVKITP
Predicted Reactivity:	Cow: 100%, Dog: 100%, Human: 100%, Mouse: 85%, Pig: 100%, Rat: 85%, Sheep: 100%, Zebrafish: 85%
Characteristics:	This is a rabbit polyclonal antibody against RAB8A. It was validated on Western Blot using a cell lysate as a positive control.
Purification:	Affinity Purified

Target Details

Target:	RAB8A
---------	-------

Target Details

Alternative Name: RAB8A ([RAB8A Products](#))

Background: RAB8A is a member of the RAS superfamily which are small GTP/GDP-binding proteins with an average size of 200 amino acids. The RAS-related proteins of the RAB/YPT family may play a role in the transport of proteins from the endoplasmic reticulum to the Golgi and the plasma membrane. The putative effector-binding site of this protein is similar to that of the RAB/YPT proteins. However, this protein contains a C-terminal CAAX motif that is characteristic of many RAS superfamily members but which is not found in YPT1 and the majority of RAB proteins. Although this gene was isolated as a transforming gene from a melanoma cell line, no linkage between MEL and malignant melanoma has been demonstrable. The protein encoded by this gene is a member of the RAS superfamily which are small GTP/GDP-binding proteins with an average size of 200 amino acids. The RAS-related proteins of the RAB/YPT family may play a role in the transport of proteins from the endoplasmic reticulum to the Golgi and the plasma membrane. This protein shares 97 %, 96 %, and 51 % similarity with the dog RAB8, mouse MEL, and mouse YPT1 proteins, respectively and contains the 4 GTP/GDP-binding sites that are present in all the RAS proteins. The putative effector-binding site of this protein is similar to that of the RAB/YPT proteins. However, this protein contains a C-terminal CAAX motif that is characteristic of many RAS superfamily members but which is not found in YPT1 and the majority of RAB proteins. Although this gene was isolated as a transforming gene from a melanoma cell line, no linkage between MEL and malignant melanoma has been demonstrable. This oncogene is located 800 kb distal to MY09B on chromosome 19p13.1. Publication Note: This RefSeq record includes a subset of the publications that are available for this gene. Please see the Entrez Gene record to access additional publications.

Alias Symbols: MEL, RAB8

Protein Interaction Partner: TFRC, SYTL4, SYTL1, TBC1D17, STAU1, UBC, MDM2, RPA3, RPA2, RPA1, STK4, OPTN, Myo5b, MYO5C, EHD3, EHD1, UBL4A, RAB1B, RAB31, COX5A, RAB11B, RAB7A, SCP2, RRBP1, NDUFA7, IDH3G, SNCA, ELAVL1, Rab8a, RPH3A, RAB3IP, RIMS2, RPH3AL, RABIF, MAP4K2, PDE6D, GDI2, OC

Protein Size: 207

Molecular Weight: 24 kDa

Gene ID: 4218

NCBI Accession: [NM_005370](#), [NP_005361](#)

UniProt: [P61006](#)

Pathways: [M Phase](#), [Regulation of long-term Neuronal Synaptic Plasticity](#), [SARS-CoV-2 Protein Interactome](#)

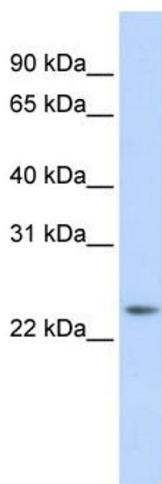
Application Details

Application Notes:	Optimal working dilutions should be determined experimentally by the investigator.
Comment:	Antigen size: 207 AA
Restrictions:	For Research Use only

Handling

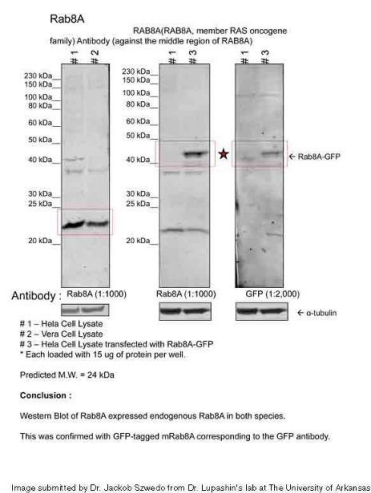
Format:	Liquid
Concentration:	Lot specific
Buffer:	Liquid. Purified antibody supplied in 1x PBS buffer with 0.09 % (w/v) sodium azide and 2 % sucrose.
Preservative:	Sodium azide
Precaution of Use:	This product contains Sodium azide: a POISONOUS AND HAZARDOUS SUBSTANCE which should be handled by trained staff only.
Handling Advice:	Avoid repeated freeze-thaw cycles.
Storage:	-20 °C
Storage Comment:	For short term use, store at 2-8°C up to 1 week. For long term storage, store at -20°C in small aliquots to prevent freeze-thaw cycles.

Images



Western Blotting

Image 1. WB Suggested Anti-RAB8A Antibody Titration: 0.2-1 ug/ml ELISA Titer: 1:62500 Positive Control: 721_B cell lysate RAB8A is supported by BioGPS gene expression data to be expressed in 721_B



Western Blotting

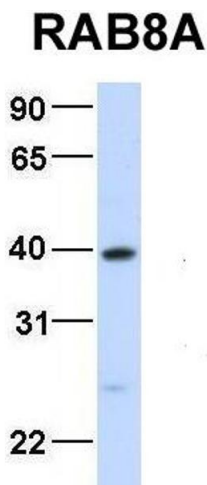
Image 2. Sample Type: 1. Human Cervical Cancer Cell Lysate (15ug)
2. Monkey Fibroblast Cell Lysate (15ug)
3. Human Cervical Cancer Cell transfected with mouse Rab8A-GFP (15ug)

Primary Dilution: 1:1000

Secondary Antibody: goat anti-Rabbit

Secondary Dilution: 1:40,000

Image Submitted by: Dr. Jakob Szwedo, Dr. Lupashin's Lab
University of Arkansas for Medical Sciences.



Western Blotting

Image 3. Host: Rabbit **Target Name:** RAB8A **Sample Type:** Human Fetal Liver **Antibody Dilution:** 1.0ug/ml