

Datasheet for ABIN2792291
anti-NAPB antibody (N-Term)[Go to Product page](#)

1 Image

Overview

Quantity:	100 µL
Target:	NAPB
Binding Specificity:	N-Term
Reactivity:	Human, Mouse, Rat, Dog, Guinea Pig, Rabbit
Host:	Rabbit
Clonality:	Polyclonal
Conjugate:	This NAPB antibody is un-conjugated
Application:	Western Blotting (WB)

Product Details

Immunogen:	The immunogen is a synthetic peptide directed towards the N terminal region of human NAPB
Sequence:	MDNAGKEREV VQLMAEAEKR VKASHSFLRG LFGGNTRIEE ACEMYTRAAN
Predicted Reactivity:	Dog: 100%, Guinea Pig: 100%, Human: 100%, Mouse: 100%, Rabbit: 100%, Rat: 100%
Characteristics:	This is a rabbit polyclonal antibody against NAPB. It was validated on Western Blot using a cell lysate as a positive control.
Purification:	Affinity Purified

Target Details

Target:	NAPB
Alternative Name:	NAPB (NAPB Products)

Target Details

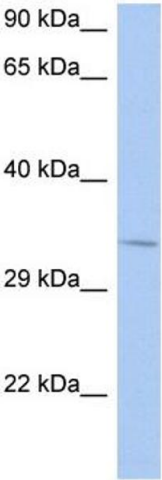
Background:	NAPB is required for vesicular transport between the endoplasmic reticulum and the Golgi apparatus. Alias Symbols: MGC26066, MGC48335, SNAP-BETA, SNAPB Protein Interaction Partner: ARL6IP1, TFEC, STX6, SNAP23, STX16, STX5, STX4, STX3, STX1A, TAF1B, UBC, ELAVL1, Protein Size: 298
Molecular Weight:	33 kDa
Gene ID:	63908
NCBI Accession:	NM_022080 , NP_071363
UniProt:	Q9H115
Pathways:	Synaptic Vesicle Exocytosis

Application Details

Application Notes:	Optimal working dilutions should be determined experimentally by the investigator.
Comment:	Antigen size: 298 AA
Restrictions:	For Research Use only

Handling

Format:	Liquid
Concentration:	Lot specific
Buffer:	Liquid. Purified antibody supplied in 1x PBS buffer with 0.09 % (w/v) sodium azide and 2 % sucrose.
Preservative:	Sodium azide
Precaution of Use:	This product contains Sodium azide: a POISONOUS AND HAZARDOUS SUBSTANCE which should be handled by trained staff only.
Handling Advice:	Avoid repeated freeze-thaw cycles.
Storage:	-20 °C
Storage Comment:	For short term use, store at 2-8°C up to 1 week. For long term storage, store at -20°C in small aliquots to prevent freeze-thaw cycles.



Western Blotting

Image 1. WB Suggested Anti-NAPB Antibody Titration: 0.2-1 ug/ml ELISA Titer: 1:62500 Positive Control: SH-SY5Y cell lysate