

Datasheet for ABIN2792292
anti-CHRNA1 antibody (C-Term)

3 Images

[Go to Product page](#)

Overview

Quantity:	100 µL
Target:	CHRNA1
Binding Specificity:	C-Term
Reactivity:	Human, Mouse, Dog, Guinea Pig, Rabbit, Pig
Host:	Rabbit
Clonality:	Polyclonal
Conjugate:	This CHRNA1 antibody is un-conjugated
Application:	Western Blotting (WB), Immunohistochemistry (IHC)

Product Details

Immunogen:	The immunogen is a synthetic peptide directed towards the C terminal region of human CHRNA1
Sequence:	STHVMPNWVR KVFIDTIPNI MFFSTMKRPS REKQDKKIFT EDIDISDISG
Predicted Reactivity:	Dog: 100%, Guinea Pig: 86%, Human: 100%, Mouse: 80%, Pig: 100%, Rabbit: 93%
Characteristics:	This is a rabbit polyclonal antibody against CHRNA1. It was validated on Western Blot and immunohistochemistry.
Purification:	Affinity Purified

Target Details

Target:	CHRNA1
---------	--------

Target Details

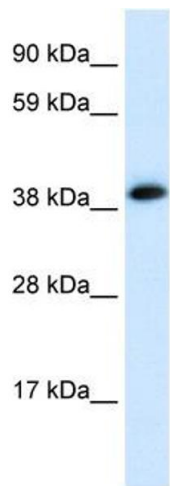
Alternative Name:	CHRNA1 (CHRNA1 Products)
Background:	<p>CHRNA1 encodes an alpha subunit that plays a role in acetylcholine binding/channel gating. The muscle acetylcholine receptor consists of 5 subunits of 4 different types: 2 alpha isoforms and 1 each of beta, gamma, and delta subunits.</p> <p>Alias Symbols: ACHRA, ACHRD, CHRNA, CMS2A, FCCMS, SCCMS</p> <p>Protein Interaction Partner: ITGA7, CHRND, CHRNG, CHRNE,</p> <p>Protein Size: 457</p>
Molecular Weight:	52 kDa
Gene ID:	1134
NCBI Accession:	NM_000079 , NP_000070
Pathways:	Skeletal Muscle Fiber Development

Application Details

Application Notes:	Optimal working dilutions should be determined experimentally by the investigator.
Comment:	Antigen size: 457 AA
Restrictions:	For Research Use only

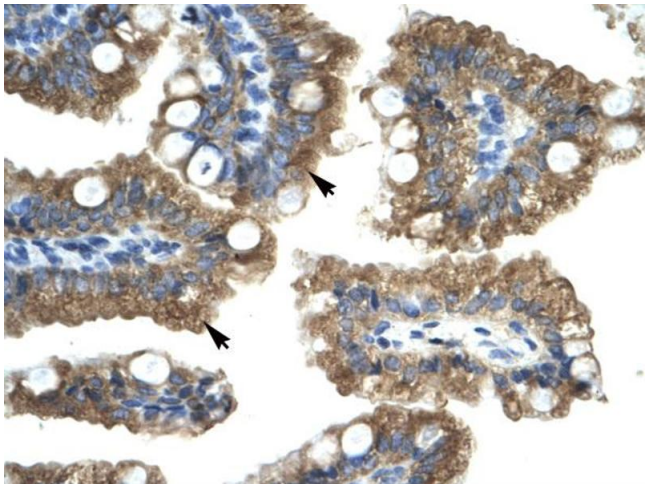
Handling

Format:	Liquid
Concentration:	Lot specific
Buffer:	Liquid. Purified antibody supplied in 1x PBS buffer with 0.09 % (w/v) sodium azide and 2 % sucrose.
Preservative:	Sodium azide
Precaution of Use:	This product contains Sodium azide: a POISONOUS AND HAZARDOUS SUBSTANCE which should be handled by trained staff only.
Handling Advice:	Avoid repeated freeze-thaw cycles.
Storage:	-20 °C
Storage Comment:	For short term use, store at 2-8°C up to 1 week. For long term storage, store at -20°C in small aliquots to prevent freeze-thaw cycles.



Western Blotting

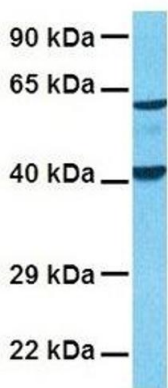
Image 1. WB Suggested Anti-CHRNA1 Antibody Titration:
0.12ug/ml Positive Control: Human heart



Immunohistochemistry

Image 2. Human Intestine

CHRNA1



Western Blotting

Image 3. Host: Rabbit Target Name: CHRNA1 Sample
Tissue: Human Fetal Lung Antibody Dilution: 1.0ug/ml