

Datasheet for ABIN2792293
anti-GDI1 antibody (C-Term)

3 Images

[Go to Product page](#)

Overview

Quantity:	100 µL
Target:	GDI1
Binding Specificity:	C-Term
Reactivity:	Human, Mouse, Rabbit, Sheep, Zebrafish (Danio rerio), Guinea Pig, Horse
Host:	Rabbit
Clonality:	Polyclonal
Conjugate:	This GDI1 antibody is un-conjugated
Application:	Western Blotting (WB)

Product Details

Immunogen:	The immunogen is a synthetic peptide directed towards the C terminal region of human GDI1
Sequence:	VFCSCSYDAT THFETTCNDI KDIYKRMAGT AFD FENMKRK QNDVFGEAEQ
Predicted Reactivity:	Guinea Pig: 92%, Horse: 92%, Human: 100%, Mouse: 92%, Rabbit: 92%, Sheep: 92%, Zebrafish: 92%
Characteristics:	This is a rabbit polyclonal antibody against GDI1. It was validated on Western Blot using a cell lysate as a positive control.
Purification:	Protein A purified

Target Details

Target:	GDI1
---------	------

Target Details

Alternative Name:	GDI1 (GDI1 Products)
Background:	<p>GDP dissociation inhibitors are proteins that regulate the GDP-GTP exchange reaction of members of the rab family, small GTP-binding proteins of the ras superfamily, that are involved in vesicular trafficking of molecules between cellular organelles. GDIs slow the rate of dissociation of GDP from rab proteins and release GDP from membrane-bound rabs. GDI1 is expressed primarily in neural and sensory tissues. Mutations in GDI1 have been linked to X-linked nonspecific mental retardation.</p> <p>Alias Symbols: 1A, GDIL, MRX41, MRX48, OPHN2, XAP-4, RABGD1A, RABGDIA</p> <p>Protein Interaction Partner: LNX1, UBC, RCC2, DCUN1D1, ACOT7, GGH, HIST1H2BO, SGTA, NEDD8, HEXA, GNAI2, ASL, ALDH9A1, SCRNI, GINS3, IQCB1, GNL1, RAB11B, RAB1A, PCMT1, UBQLN4, CUL5, CDK2, SIRT7, MINOS1, TK1, RAB24, RAB1B, RABAC1, RAB27A, RAC2, RHOH, RAB9A, RAB6A, EPB41, CDC42, PSEN1,</p> <p>Protein Size: 447</p>
Molecular Weight:	51 kDa
Gene ID:	2664
NCBI Accession:	NM_001493 , NP_001484
UniProt:	P31150

Application Details

Application Notes:	Optimal working dilutions should be determined experimentally by the investigator.
Comment:	Antigen size: 447 AA
Restrictions:	For Research Use only

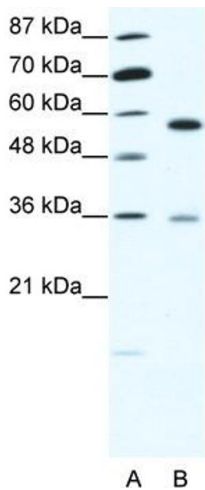
Handling

Format:	Liquid
Concentration:	Lot specific
Buffer:	Liquid. Purified antibody supplied in 1x PBS buffer with 0.09 % (w/v) sodium azide and 2 % sucrose.
Preservative:	Sodium azide
Precaution of Use:	This product contains Sodium azide: a POISONOUS AND HAZARDOUS SUBSTANCE which should be handled by trained staff only.

Handling

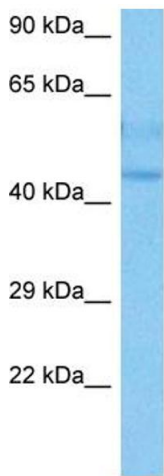
Handling Advice:	Avoid repeated freeze-thaw cycles.
Storage:	-20 °C
Storage Comment:	For short term use, store at 2-8°C up to 1 week. For long term storage, store at -20°C in small aliquots to prevent freeze-thaw cycles.

Images



Western Blotting

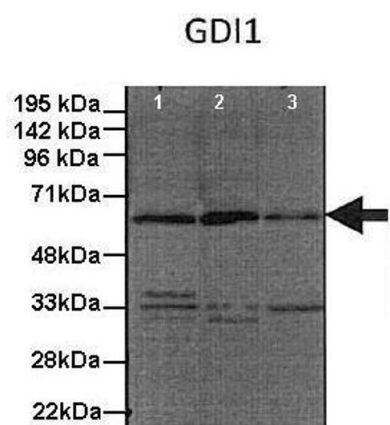
Image 1. WB Suggested Anti-GDI1 Antibody Titration: 1.25ug/ml ELISA Titer: 1:312500 Positive Control: HepG2 cell lysate



Host: Rabbit
Target Name: Gdi1
Sample Type: Mouse Heart Lysate
Antibody Dilution: 1.0µg/ml

Western Blotting

Image 2. Host: Mouse Target Name: GDI1 Sample Tissue: Mouse Heart Antibody Dilution: 1ug/ml



Western Blotting

Image 3. Human, Mouse

See Immunoblot 2 Data and Customer Feedback for more Information