



[Go to Product page](#)

Datasheet for ABIN2792294  
**anti-SNAP25 antibody (C-Term)**

3 Images

Overview

Quantity:	100 µL
Target:	SNAP25
Binding Specificity:	C-Term
Reactivity:	Rat, Dog, Guinea Pig
Host:	Rabbit
Clonality:	Polyclonal
Conjugate:	This SNAP25 antibody is un-conjugated
Application:	Western Blotting (WB)

Product Details

Immunogen:	The immunogen is a synthetic peptide directed towards the C terminal region of mouse SNAP25
Sequence:	IGNLRHMALD MGNEIDTQNR QIDRIMEKAD SNKTRIDEAN QRATKMLGSG
Cross-Reactivity:	Cow (Bovine), Dog (Canine), Chicken, Human, Mouse (Murine), Rat (Rattus)
Predicted Reactivity:	Dog: 100%, Guinea Pig: 100%, Rat: 100%
Characteristics:	This is a rabbit polyclonal antibody against SNAP25. It was validated on Western Blot using a cell lysate as a positive control.
Purification:	Affinity Purified

## Target Details

---

Target:	SNAP25
Alternative Name:	SNAP25 ( <a href="#">SNAP25 Products</a> )
Background:	<p>Snap25 contains 2 t-SNARE coiled-coil homology domains and belongs to the SNAP-25 family. t-SNARE involved in the molecular regulation of neurotransmitter release. Snap25 may play an important role in the synaptic function of specific neuronal systems. Snap25 associates with proteins involved in vesicle docking and membrane fusion.</p> <p>Alias Symbols: sp, Bdr, SNAP-25</p> <p>Protein Interaction Partner: Vamp2, Hrs2, Hgs, Stx1 a, Htt, Snca, Dnajc5, Stx4, Stx3, Stx2, Sgta, Ubc, Hspa8, Zdhhc17, Zdhhc7, Zdhhc3, Snap25,</p> <p>Protein Size: 206</p>
Molecular Weight:	23 kDa
Gene ID:	20614
NCBI Accession:	<a href="#">NM_011428</a> , <a href="#">NP_035558</a>
UniProt:	<a href="#">P60879</a>
Pathways:	<a href="#">Positive Regulation of Peptide Hormone Secretion</a> , <a href="#">Hormone Transport</a> , <a href="#">Synaptic Vesicle Exocytosis</a> , <a href="#">Dicarboxylic Acid Transport</a>

## Application Details

---

Application Notes:	<p>WB Suggested Anti-SNAP25 Antibody Titration: 0.2-1 µg/mL</p> <p>Positive Control: Human Frontal cortex.</p> <p>Optimal working dilutions should be determined experimentally by the investigator.</p>
Comment:	Antigen size: 206 AA
Restrictions:	For Research Use only

## Handling

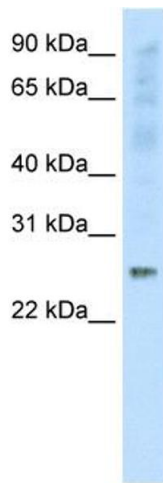
---

Format:	Liquid
Concentration:	Lot specific
Buffer:	Liquid. Purified antibody supplied in 1x PBS buffer with 0.09 % (w/v) sodium azide and 2 % sucrose.
Preservative:	Sodium azide

## Handling

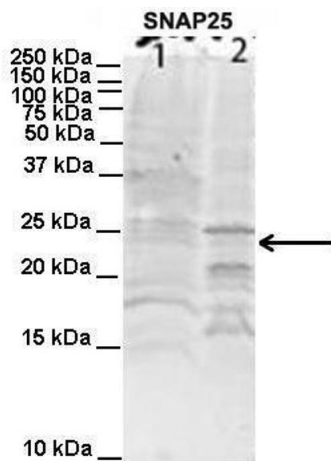
Precaution of Use:	This product contains Sodium azide: a POISONOUS AND HAZARDOUS SUBSTANCE which should be handled by trained staff only.
Handling Advice:	Avoid repeated freeze-thaw cycles.
Storage:	-20 °C
Storage Comment:	For short term use, store at 2-8°C up to 1 week. For long term storage, store at -20°C in small aliquots to prevent freeze-thaw cycles.

## Images



### Western Blotting

**Image 1.** WB Suggested Anti-SNAP25 Antibody Titration: 0.2-1 ug/ml Positive Control: Human Frontal cortex



### Western Blotting

**Image 2.** Lanes: 1. Human NT-2 cells (60ug) lysate 2. Mouse WT brain extract (80ug) Primary Antibody Dilution: 2ug/ml Secondary Antibody: IRDye 800CW goat anti-rabbit from Li-COR Bioscience Secondary Antibody Dilution: 1: 20,000 Gene Name: SNAP25 Submitted by: Dr. Yuzhi Chen, University of Arkansas for Medical Science

See Immunoblot 2 Data and Customer Feedback for more information



Host: Rabbit  
Target Name: SNAP25  
Sample Type: Ovary Tumor Lysate  
Antibody Dilution: 1.0µg/ml

### Western Blotting

**Image 3.** Host: Rabbit Target Name: SNAP25 Sample  
Tissue: Human Ovary Tumor Antibody Dilution: 1ug/ml