



[Go to Product page](#)

Datasheet for ABIN2792308
anti-MMP2 antibody (C-Term)

6 Images

1 Publication

Overview

Quantity:	100 µL
Target:	MMP2
Binding Specificity:	C-Term
Reactivity:	Human, Rat, Mouse, Rabbit, Cow, Dog, Sheep, Guinea Pig, Horse
Host:	Rabbit
Clonality:	Polyclonal
Conjugate:	This MMP2 antibody is un-conjugated
Application:	Western Blotting (WB), Immunohistochemistry (IHC)

Product Details

Immunogen:	The immunogen is a synthetic peptide directed towards the C terminal region of human MMP2
Sequence:	AWNAIPDNLDAVVDLQGGGH SYFFKGAYYL KLENQSLKSV KFGSIKSDWL
Predicted Reactivity:	Cow: 100%, Dog: 100%, Guinea Pig: 100%, Horse: 100%, Human: 100%, Mouse: 100%, Rabbit: 93%, Rat: 100%, Sheep: 100%
Characteristics:	This is a rabbit polyclonal antibody against MMP2. It was validated on Western Blot using a cell lysate as a positive control.
Purification:	Protein A purified

Target Details

Target:	MMP2
---------	------

Target Details

Alternative Name:	MMP2 (MMP2 Products)
Background:	<p>MMP-2 is involved in the cleavage of gelatin type I and collagen types IV, V, VII, X.</p> <p>Alias Symbols: CLG4, MONA, CLG4A, TBE-1, MMP-II</p> <p>Protein Interaction Partner: HSP90AA1, CAND1, ITGB1, ITGAV, USP12, OSBPL10, SPOCK1, BACE1, PZP, MMP25, CLDN1, KISS1, MMP17, TIMP4, EPHB2, CXCL12, MMP14, BCAN, LCN2, TIMP1, TGFB1, TIMP3, TIMP2, THBS2, THBS1, CCL7, ACAN, LGALS3, IL1B, IGFBP3, FGFR1, DCN, COL18A1, COL6A3, COL1A1, COL7A1</p> <p>Protein Size: 660</p>
Molecular Weight:	74 kDa
Gene ID:	4313
NCBI Accession:	NM_004530 , NP_004521
UniProt:	P08253
Pathways:	Activation of Innate immune Response

Application Details

Application Notes:	Optimal working dilutions should be determined experimentally by the investigator.
Comment:	Antigen size: 660 AA
Restrictions:	For Research Use only

Handling

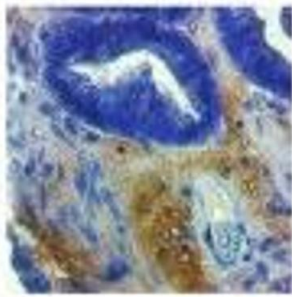
Format:	Liquid
Concentration:	Lot specific
Buffer:	Liquid. Purified antibody supplied in 1x PBS buffer with 0.09 % (w/v) sodium azide and 2 % sucrose.
Preservative:	Sodium azide
Precaution of Use:	This product contains Sodium azide: a POISONOUS AND HAZARDOUS SUBSTANCE which should be handled by trained staff only.
Handling Advice:	Avoid repeated freeze-thaw cycles.
Storage:	-20 °C
Storage Comment:	For short term use, store at 2-8°C up to 1 week. For long term storage, store at -20°C in small

aliquots to prevent freeze-thaw cycles.

Publications

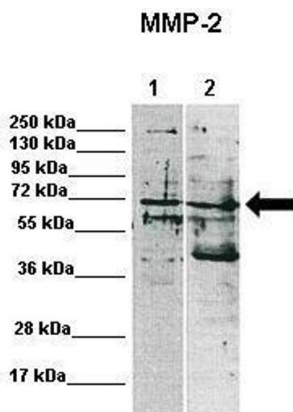
Product cited in: Puttabyatappa, Irwin, Martin, Mesquitta, Veiga-Lopez, Padmanabhan: "Developmental Programming: Gestational Exposure to Excess Testosterone Alters Expression of Ovarian Matrix Metalloproteases and Their Target Proteins" in: **Reproductive sciences (Thousand Oaks, Calif.)**, pp. 1933719117697130, (2017) ([PubMed](#)).

Images



MMP2 (AVARP20016_T100)
MMP1 in connective tissue in ovarian carcinoma was detected using HRP/DAB brown color stain
Recommended for IHC on human tissue. Working dilution 2-10 ug/mL.

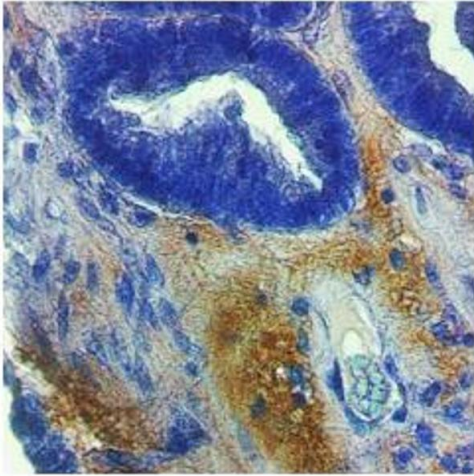
Image 1.



Western Blotting

Image 2. Lanes: Lane 1: 15ug MDA-MB-231 lysate Lane 2: 15ug MCF7 lysate Primary Antibody Dilution: 1:1000 Secondary Antibody: Anti-rabbit-HRP Secondary Antibody Dilution: 1:10,000 Gene Name: MMP2 Submitted by: Katarzyna Augoff, University of Wroclaw

See Immunoblot 1 Data and Customer Feedback for more information



Immunohistochemistry

Image 3. MMP1 in connective tissue in ovarian carcinoma was detected using HRP/DAB brown color stain. Recommended for IHC on human tissue. Working dilution 2-10 ug/mL

Please check the [product details page](#) for more images. Overall 6 images are available for ABIN2792308.