

Datasheet for ABIN2792524
anti-PRDM1 antibody (Middle Region)

3 Images

1 Publication

[Go to Product page](#)

Overview

Quantity:	100 µL
Target:	PRDM1
Binding Specificity:	Middle Region
Reactivity:	Human, Mouse, Rat, Dog, Pig, Cow, Horse, Rabbit, Guinea Pig
Host:	Rabbit
Clonality:	Polyclonal
Conjugate:	This PRDM1 antibody is un-conjugated
Application:	Western Blotting (WB), Immunohistochemistry (IHC)

Product Details

Immunogen:	The immunogen is a synthetic peptide directed towards the middle region of human PRDM1
Sequence:	VEDDISVISV VEKEILAVVR KEKEETGLKV SLQRNMGNGL LSSGCSLYES
Cross-Reactivity:	Cow (Bovine), Human, Mouse (Murine), Rat (Rattus)
Predicted Reactivity:	Cow: 100%, Dog: 100%, Guinea Pig: 84%, Horse: 100%, Human: 100%, Mouse: 92%, Pig: 100%, Rabbit: 92%, Rat: 92%
Characteristics:	This is a rabbit polyclonal antibody against PRDM1. It was validated on Western Blot using a cell lysate as a positive control.
Purification:	Affinity Purified

Target Details

Target:	PRDM1
Alternative Name:	PRDM1 / BLIMP1 (PRDM1 Products)
Background:	<p>PRDM1 is a protein that acts as a repressor of beta-interferon gene expression. The protein binds specifically to the PRDI (positive regulatory domain I element) of the beta-IFN gene promoter. Transcription of this gene increases upon virus induction. Two alternatively spliced transcript variants that encode different isoforms have been reported. This gene encodes a protein that acts as a repressor of beta-interferon gene expression. The protein binds specifically to the PRDI (positive regulatory domain I element) of the beta-IFN gene promoter. Transcription of this gene increases upon virus induction. Two alternatively spliced transcript variants that encode different isoforms have been reported.</p> <p>Alias Symbols: BLIMP1, MGC118922, MGC118923, MGC118924, MGC118925, PRDI-BF1</p> <p>Protein Interaction Partner: PRMT5, SENP1, EHMT2, PIAS1, SUMO1, IRF2, IRF1, HDAC2, HDAC1, HIST1H1A, MS4A1, HSP90AA1, ATXN1, ELAVL1, KDM1A, IRF4, TLE2, TLE1, AES, PRMT7, HIST2H3A,</p> <p>Protein Size: 691</p>
Molecular Weight:	77 kDa
Gene ID:	639
NCBI Accession:	NM_182907 , NP_878911
UniProt:	Q86WM7
Pathways:	Regulation of Muscle Cell Differentiation

Application Details

Application Notes:	WB Suggested Anti-PRDM1 Antibody Titration: 0.2-1 µg/mL ELISA Titer: 1:62500 Positive Control: SH-SY5Y cell lysate. Optimal working dilutions should be determined experimentally by the investigator.
Comment:	Antigen size: 691 AA
Restrictions:	For Research Use only

Handling

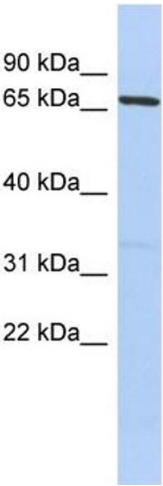
Format:	Liquid
---------	--------

Handling

Concentration:	Lot specific
Buffer:	Liquid. Purified antibody supplied in 1x PBS buffer with 0.09 % (w/v) sodium azide and 2 % sucrose.
Preservative:	Sodium azide
Precaution of Use:	This product contains Sodium azide: a POISONOUS AND HAZARDOUS SUBSTANCE which should be handled by trained staff only.
Handling Advice:	Avoid repeated freeze-thaw cycles.
Storage:	-20 °C
Storage Comment:	For short term use, store at 2-8°C up to 1 week. For long term storage, store at -20°C in small aliquots to prevent freeze-thaw cycles.

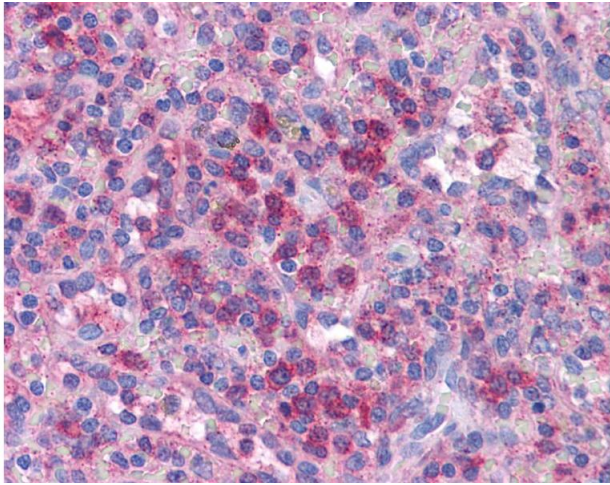
Publications

Product cited in:	<p>Bonito-Oliva, Barbash, Sakmar, Graham: "Nucleobindin 1 binds to multiple types of pre-fibrillar amyloid and inhibits fibrillization." in: Scientific reports, Vol. 7, pp. 42880, (2017) (PubMed).</p> <p>Larkin, Ribeiro, Lavoie: "Topology and membrane anchoring of the lysosomal storage disease-related protein CLN5." in: Human mutation, Vol. 34, Issue 12, pp. 1688-97, (2013) (PubMed).</p> <p>Lin, Fischer, Lavoie, Huang, Farquhar: "Calnuc plays a role in dynamic distribution of Galphai but not Gbeta subunits and modulates ACTH secretion in AtT-20 neuroendocrine secretory cells." in: Molecular neurodegeneration, Vol. 4, pp. 15, (2009) (PubMed).</p> <p>Valencia, Cotten, Duan, Liu: "Modulation of nucleobindin-1 and nucleobindin-2 by caspases." in: FEBS letters, Vol. 582, Issue 2, pp. 286-90, (2008) (PubMed).</p> <p>Sugeno, Takeda, Hasegawa, Kobayashi, Kikuchi, Mori, Wakabayashi, Itoyama: "Serine 129 phosphorylation of alpha-synuclein induces unfolded protein response-mediated cell death." in: The Journal of biological chemistry, Vol. 283, Issue 34, pp. 23179-88, (2008) (PubMed).</p>
-------------------	-----------------------------------------------------------------------------------------------------------------------------------------------------------------------------------------------------------------------------------------------------------------------------------------------------------------------------------------------------------------------------------------------------------------------------------------------------------------------------------------------------------------------------------------------------------------------------------------------------------------------------------------------------------------------------------------------------------------------------------------------------------------------------------------------------------------------------------------------------------------------------------------------------------------------------------------------------------------------------------------------------------------------------------------------------------------------------------------------------------------------------------------------------------------------------------------------------------------------------------------------------------



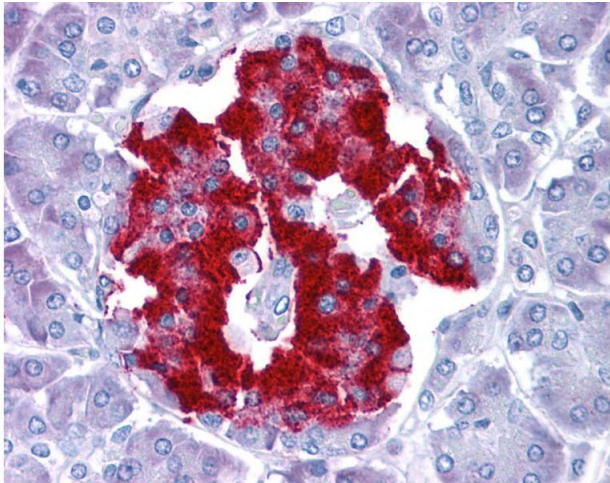
Western Blotting

Image 1. WB Suggested Anti-PRDM1 Antibody Titration: 0.2-1 ug/ml ELISA Titer: 1:62500 Positive Control: SH-SY5Y cell lysate



Immunohistochemistry

Image 2.



Immunohistochemistry

Image 3.