

Datasheet for ABIN2792530
anti-ETS1 antibody (N-Term)

3 Images

[Go to Product page](#)

Overview

Quantity:	100 µL
Target:	ETS1
Binding Specificity:	N-Term
Reactivity:	Human, Mouse, Rat, Rabbit, Dog, Cow, Goat, Horse, Guinea Pig, Zebrafish (Danio rerio)
Host:	Rabbit
Clonality:	Polyclonal
Conjugate:	This ETS1 antibody is un-conjugated
Application:	Western Blotting (WB), Immunohistochemistry (IHC)

Product Details

Immunogen:	The immunogen is a synthetic peptide directed towards the N terminal region of human ETS1
Sequence:	TFSGFTKEQQ RLGIPKDPRQ WTETHVRDWV MWAVNEFSLK GVDFQKFCMN
Cross-Reactivity:	Cow (Bovine), Dog (Canine), Chicken, Human, Mouse (Murine), Pig (Porcine), Rabbit, Rat (Rattus)
Predicted Reactivity:	Cow: 100%, Dog: 100%, Goat: 100%, Guinea Pig: 100%, Horse: 100%, Human: 100%, Mouse: 100%, Rabbit: 100%, Rat: 100%, Zebrafish: 84%
Characteristics:	This is a rabbit polyclonal antibody against ETS1. It was validated on Western Blot and immunohistochemistry.
Purification:	Protein A purified

Target Details

Target:	ETS1
Alternative Name:	ETS1 (ETS1 Products)
Background:	<p>ETS-1 is a member of the ets family of transcription factors, which are key mediators of physiological and pathological processes.</p> <p>Alias Symbols: ETS-1, EWSR2</p> <p>Protein Interaction Partner: RFWD2, UBC, C17orf62, ARID4B, ARL6IP4, RPL13A, EIF5B, NCL, JUN, APLP2, MEIS1, TP53, SRSF11, SRA1, EPAS1, APP, SP100, CREBBP, ATF2, RUNX1T1, ELAVL1, SUMO2, PIAS4, MAPK7, PLEC, EP300, NCOR1, MED23, NCOA3, SRC, DAXX, CAMK2B, HTATIP2, UBE2I, CAMK2A, TDP2, STA</p> <p>Protein Size: 441</p>
Molecular Weight:	50 kDa
Gene ID:	2113
NCBI Accession:	NM_005238 , NP_005229
UniProt:	P14921

Application Details

Application Notes:	<p>WB Suggested Anti-ETS1 Antibody Titration: 1.0 µg/mL</p> <p>Positive Control: HepG2 cell lysate.</p> <p>Optimal working dilutions should be determined experimentally by the investigator.</p>
Comment:	Antigen size: 441 AA
Restrictions:	For Research Use only

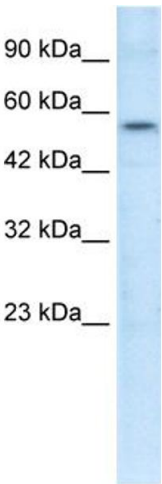
Handling

Format:	Liquid
Concentration:	Lot specific
Buffer:	Liquid. Purified antibody supplied in 1x PBS buffer with 0.09 % (w/v) sodium azide and 2 % sucrose.
Preservative:	Sodium azide
Precaution of Use:	This product contains Sodium azide: a POISONOUS AND HAZARDOUS SUBSTANCE which should be handled by trained staff only.

Handling

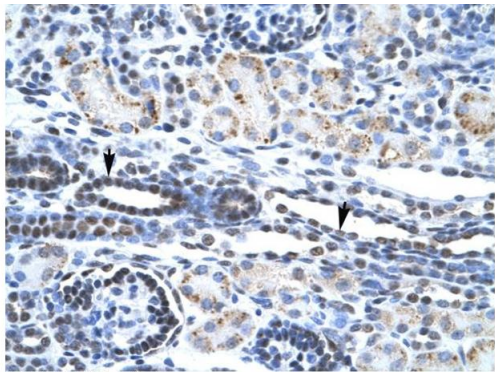
Handling Advice:	Avoid repeated freeze-thaw cycles.
Storage:	-20 °C
Storage Comment:	For short term use, store at 2-8°C up to 1 week. For long term storage, store at -20°C in small aliquots to prevent freeze-thaw cycles.

Images



Western Blotting

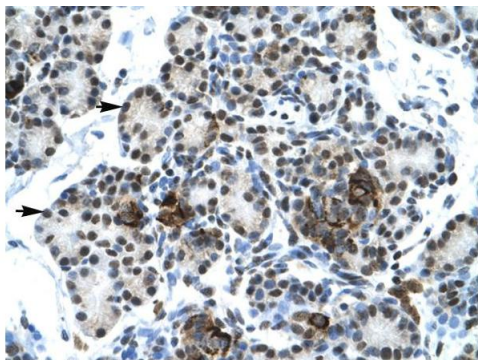
Image 1. WB Suggested Anti-ETS1 Antibody Titration:
1.0ug/ml Positive Control: HepG2 cell lysate



Immunohistochemistry

Image 2. Human kidney

Rabbit Anti-ETS1 Antibody
Catalog Number: P100604
Lot Number: QC0604
Paraffin Embedded Tissue: Human Kidney
Cells with Positive label: Epithelial cells of renal tubule(Indicated with Arrows)
Antibody Concentration: 4.0-8.0 µg/ml
Magnification: 400X



Rabbit Anti-ETS1 Antibody
Catalog Number: P100604
Lot Number: QC0604
Paraffin Embedded Tissue: Human Pancreas
Cells with Positive label: Epithelial cells of pancreatic acinus(Indicated with Arrows)
Antibody Concentration: 4.0-8.0 µg/ml
Magnification: 400X

Immunohistochemistry

Image 3. Human Pancreas