

Datasheet for ABIN2792539
anti-ERG antibody (Middle Region)

3 Images

[Go to Product page](#)

Overview

Quantity:	100 µL
Target:	ERG
Binding Specificity:	Middle Region
Reactivity:	Human, Mouse, Rat, Cow, Dog, Guinea Pig, Horse, Rabbit
Host:	Rabbit
Clonality:	Polyclonal
Conjugate:	This ERG antibody is un-conjugated
Application:	Western Blotting (WB)

Product Details

Immunogen:	The immunogen is a synthetic peptide directed towards the middle region of human ERG
Sequence:	ARNTDLPYEP PRRSAWTGHG HPTPQSKAAQ PSPSTVPKTE DQRPQLDPYQ
Cross-Reactivity:	Cow (Bovine), Chicken, Human, Mouse (Murine), Rat (Rattus)
Predicted Reactivity:	Cow: 100%, Dog: 92%, Guinea Pig: 85%, Horse: 100%, Human: 100%, Mouse: 92%, Rabbit: 92%, Rat: 100%
Characteristics:	This is a rabbit polyclonal antibody against ERG. It was validated on Western Blot using a cell lysate as a positive control.
Purification:	Protein A purified

Target Details

Target:	ERG
Alternative Name:	ERG (ERG Products)
Background:	<p>V-ets erythroblastosis virus E26 oncogene like isoform 2 (ERG) is a transcriptional regulator. It may participate in transcriptional regulation through the recruitment of SETDB1 histone methyltransferase and subsequent modification of local chromatin structure.</p> <p>Alias Symbols: p55, erg-3</p> <p>Protein Interaction Partner: UBC, SFPQ, RPLP0, PRKDC, POLR2A, PCBP1, NUMA1, NPM1, NONO, NCL, ILF3, ILF2, HSPD1, HNRNPU, HNRNPH3, HNRNPH1, HNRNPF, HNRNPD, HNRNPC, HNRNPAB, HNRNPA2B1, HNRNPA1, FBL, ELAVL1, EEF1A2, DKC1, CLTC, CDC5L, HNRNPUL2, RCC2, PRPF40A, SF3B1, SF3B3, SNRNP200, PUF6</p> <p>Protein Size: 462</p>
Molecular Weight:	52 kDa
Gene ID:	2078
NCBI Accession:	NM_004449 , NP_004440
UniProt:	P11308

Application Details

Application Notes:	<p>WB Suggested Anti-ERG Antibody Titration: 1.0 µg/mL</p> <p>Positive Control: Jurkat cell lysate.</p> <p>Optimal working dilutions should be determined experimentally by the investigator.</p>
Comment:	Antigen size: 462 AA
Restrictions:	For Research Use only

Handling

Format:	Liquid
Concentration:	Lot specific
Buffer:	Liquid. Purified antibody supplied in 1x PBS buffer with 0.09 % (w/v) sodium azide and 2 % sucrose.
Preservative:	Sodium azide
Precaution of Use:	This product contains Sodium azide: a POISONOUS AND HAZARDOUS SUBSTANCE which should be handled by trained staff only.

Handling

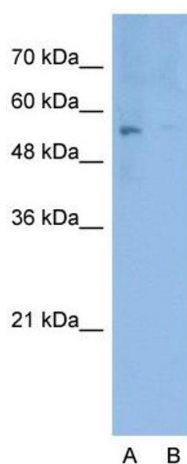
Handling Advice:	Avoid repeated freeze-thaw cycles.
Storage:	-20 °C
Storage Comment:	For short term use, store at 2-8°C up to 1 week. For long term storage, store at -20°C in small aliquots to prevent freeze-thaw cycles.

Images



Western Blotting

Image 1. WB Suggested Anti-ERG Antibody Titration:
1.0ug/ml Positive Control: Jurkat cell lysate



Anti-ERG Western Blot & Peptide Block Validation

Lot Number: QC0625
Lysate: Jurkat Cell

Lane A: Primary Antibody
Lane B: Primary Antibody + Blocking Peptide

Primary Antibody Concentration: 5.0µg/ml
Peptide Concentration: 8.0µg/ml
Lysate Quantity: 25µg/lane
Gel Concentration: 12%

Western Blotting

Image 2. Host: Rabbit Target Name: ERG Sample Type:
Jurkat Lane A: Primary Antibody Lane B: Primary Antibody +
Blocking Peptide Primary Antibody Concentration:
1.25ug/mL Peptide Concentration: 1.0ug/mL Lysate
Quantity: 25ug/lane Gel Concentration: 12%

