

Datasheet for ABIN2792556
anti-RFX1 antibody (C-Term)

2 Images

[Go to Product page](#)

Overview

Quantity:	100 µL
Target:	RFX1
Binding Specificity:	C-Term
Reactivity:	Human, Mouse, Rat, Cow, Dog, Guinea Pig, Pig, Zebrafish (Danio rerio)
Host:	Rabbit
Clonality:	Polyclonal
Conjugate:	This RFX1 antibody is un-conjugated
Application:	Western Blotting (WB)

Product Details

Immunogen:	The immunogen is a synthetic peptide directed towards the C terminal region of human RFX1
Sequence:	ESEDELPQDI SLAAGGESPA LGPETLEPPA KLARTDARGL FVQALPSS
Cross-Reactivity:	Cow (Bovine), Dog (Canine), Human, Mouse (Murine), Rat (Rattus)
Predicted Reactivity:	Cow: 100%, Dog: 100%, Guinea Pig: 100%, Human: 100%, Mouse: 92%, Pig: 92%, Rat: 92%, Zebrafish: 92%
Characteristics:	This is a rabbit polyclonal antibody against RFX1. It was validated on Western Blot using a cell lysate as a positive control.
Purification:	Affinity Purified

Target Details

Target:	RFX1
Alternative Name:	RFX1 (RFX1 Products)
Background:	<p>RFX1 is a member of the regulatory factor X protein family, which are transcription factors that contain a highly-conserved winged helix DNA binding domain. RFX1 is structurally related to regulatory factors X2, X3, X4, and X5. It is a transcriptional activator that can bind DNA as a monomer or as a heterodimer with RFX family members X2, X3, and X5, but not with X4. This protein binds to the X-boxes of MHC class II genes and is essential for their expression. Also, it can bind to an inverted repeat that is required for expression of hepatitis B virus genes. This gene is a member of the regulatory factor X gene family, which encodes transcription factors that contain a highly-conserved winged helix DNA binding domain. The protein encoded by this gene is structurally related to regulatory factors X2, X3, X4, and X5. It is a transcriptional activator that can bind DNA as a monomer or as a heterodimer with RFX family members X2, X3, and X5, but not with X4. This protein binds to the X-boxes of MHC class II genes and is essential for their expression. Also, it can bind to an inverted repeat that is required for expression of hepatitis B virus genes. Publication Note: This RefSeq record includes a subset of the publications that are available for this gene. Please see the Entrez Gene record to access additional publications.</p> <p>Alias Symbols: EF-C, EFC, RFX</p> <p>Protein Interaction Partner: SOX2, SMAD9, SMAD4, SMAD1, NOTCH1, Cebpb, NCOA3, HDAC1, NFIC, NFIB, TADA3, RFX3, MAGED1, ABL1, NFIX, HMGB1, HIVEP2, RFX2, ADD1,</p> <p>Protein Size: 979</p>
Molecular Weight:	105 kDa
Gene ID:	5989
NCBI Accession:	NM_002918 , NP_002909
UniProt:	P22670
Pathways:	Human Leukocyte Antigen (HLA) in Adaptive Immune Response

Application Details

Application Notes:	WB Suggested Anti-RFX1 Antibody Titration: 0.2-1 µg/mL
	ELISA Titer: 1:312500
	Positive Control: MCF7 cell lysate.
	Optimal working dilutions should be determined experimentally by the investigator.

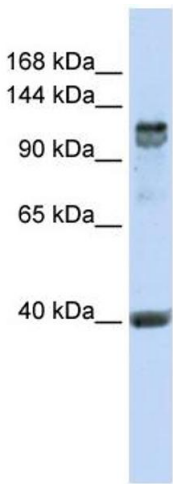
Application Details

Comment:	Antigen size: 979 AA
Restrictions:	For Research Use only

Handling

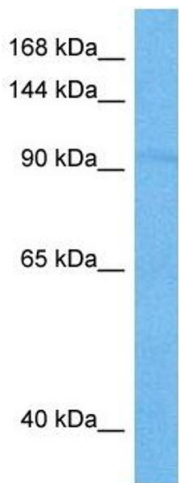
Format:	Liquid
Concentration:	Lot specific
Buffer:	Liquid. Purified antibody supplied in 1x PBS buffer with 0.09 % (w/v) sodium azide and 2 % sucrose.
Preservative:	Sodium azide
Precaution of Use:	This product contains Sodium azide: a POISONOUS AND HAZARDOUS SUBSTANCE which should be handled by trained staff only.
Handling Advice:	Avoid repeated freeze-thaw cycles.
Storage:	-20 °C
Storage Comment:	For short term use, store at 2-8°C up to 1 week. For long term storage, store at -20°C in small aliquots to prevent freeze-thaw cycles.

Images



Western Blotting

Image 1. WB Suggested Anti-RFX1 Antibody Titration: 0.2-1 ug/ml ELISA Titer: 1:312500 Positive Control: MCF7 cell lysate



Western Blotting

Image 2. Host: Mouse Target Name: RFX1 Sample Tissue: Mouse Pancreas Antibody Dilution: 1ug/ml