

Datasheet for ABIN2792559  
**anti-TMF1 antibody (Middle Region)**[Go to Product page](#)

## 1 Image

## Overview

Quantity:	100 µL
Target:	TMF1
Binding Specificity:	Middle Region
Reactivity:	Human, Rat, Mouse, Horse, Cow, Guinea Pig, Rabbit
Host:	Rabbit
Clonality:	Polyclonal
Conjugate:	This TMF1 antibody is un-conjugated
Application:	Western Blotting (WB)

## Product Details

Immunogen:	The immunogen is a synthetic peptide directed towards the middle region of human TMF1
Sequence:	GNLEKTRSIM AEELVKLTNQ NDELEEKVKE IPKLRTQLRD LDQRYNTILQ
Cross-Reactivity:	Human, Mouse (Murine)
Predicted Reactivity:	Cow: 92%, Guinea Pig: 92%, Horse: 100%, Human: 100%, Mouse: 92%, Rabbit: 100%, Rat: 92%
Characteristics:	This is a rabbit polyclonal antibody against TMF1. It was validated on Western Blot using a cell lysate as a positive control.
Purification:	Affinity Purified

## Target Details

Target:	TMF1
---------	------

## Target Details

Alternative Name:	TMF / TMF1 ( <a href="#">TMF1 Products</a> )
Background:	<p>TMF1 binds the HIV-1 TATA element and inhibits transcriptional activation by the TATA-binding protein (TBP).</p> <p>Alias Symbols: ARA160, TMF</p> <p>Protein Interaction Partner: UBC, NR3C1, GFI1B, ITSN2, KAT2B, PLK1, SMARCA4, AR, RAB6A, FER,</p> <p>Protein Size: 1093</p>
Molecular Weight:	123 kDa
Gene ID:	7110
NCBI Accession:	<a href="#">NM_007114</a> , <a href="#">NP_009045</a>
UniProt:	<a href="#">P82094</a>
Pathways:	<a href="#">Hormone Transport</a>

## Application Details

Application Notes:	<p>WB Suggested Anti-TMF1 Antibody Titration: 0.2-1 µg/mL</p> <p>ELISA Titer: 1:312500</p> <p>Positive Control: MCF7 cell lysate.</p> <p>Optimal working dilutions should be determined experimentally by the investigator.</p>
Comment:	Antigen size: 1093 AA
Restrictions:	For Research Use only

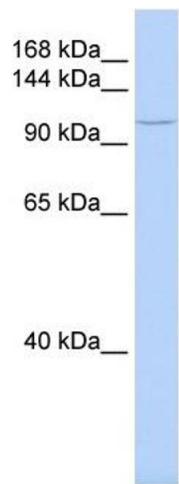
## Handling

Format:	Liquid
Concentration:	Lot specific
Buffer:	Liquid. Purified antibody supplied in 1x PBS buffer with 0.09 % (w/v) sodium azide and 2 % sucrose.
Preservative:	Sodium azide
Precaution of Use:	This product contains Sodium azide: a POISONOUS AND HAZARDOUS SUBSTANCE which should be handled by trained staff only.
Handling Advice:	Avoid repeated freeze-thaw cycles.

Handling

Storage:	-20 °C
Storage Comment:	For short term use, store at 2-8°C up to 1 week. For long term storage, store at -20°C in small aliquots to prevent freeze-thaw cycles.

Images



Western Blotting

**Image 1.** WB Suggested Anti-TMF1 Antibody Titration: 0.2-1 ug/ml ELISA Titer: 1:312500 Positive Control: MCF7 cell lysate There is BioGPS gene expression data showing that TMF1 is expressed in MCF7