

Datasheet for ABIN2792562  
**anti-LYL1 antibody (N-Term)**[Go to Product page](#)

2 Images

1 Publication

## Overview

Quantity:	100 µL
Target:	LYL1
Binding Specificity:	N-Term
Reactivity:	Human, Pig
Host:	Rabbit
Clonality:	Polyclonal
Conjugate:	This LYL1 antibody is un-conjugated
Application:	Western Blotting (WB)

## Product Details

Immunogen:	The immunogen is a synthetic peptide directed towards the N terminal region of human LYL1
Sequence:	ASPGPPQVEE VGHRGGSSPP RLPPGVPVIS LGHSRPPGVA MPPTTELGLR
Cross-Reactivity:	Human
Predicted Reactivity:	Human: 100%, Pig: 92%
Characteristics:	This is a rabbit polyclonal antibody against LYL1. It was validated on Western Blot using a cell lysate as a positive control.
Purification:	Affinity Purified

## Target Details

Target:	LYL1
---------	------

## Target Details

Alternative Name:	LYL1 ( <a href="#">LYL1 Products</a> )
Background:	<p>LYL1 contains 1 basic helix-loop-helix (bHLH) domain. A chromosomal aberration, translocation t (7,19)(q35,p13) with TCRB, involving LYL1 may be a cause of a form of T-cell acute lymphoblastic leukemia (T-ALL).</p> <p>Alias Symbols: bHLHa18</p> <p>Protein Interaction Partner: TAL1, TRIM33, DRG1, LMO1, LMO2, NFKB1, TCF3, NFKBIA, TCF4,</p> <p>Protein Size: 280</p>
Molecular Weight:	30 kDa
Gene ID:	4066
NCBI Accession:	<a href="#">NM_005583</a> , <a href="#">NP_005574</a>
UniProt:	<a href="#">P12980</a>

## Application Details

Application Notes:	<p>WB Suggested Anti-LYL1 Antibody Titration: 0.2-1 µg/mL</p> <p>Positive Control: 721_B cell lysate.</p> <p>Optimal working dilutions should be determined experimentally by the investigator.</p>
Comment:	Antigen size: 280 AA
Restrictions:	For Research Use only

## Handling

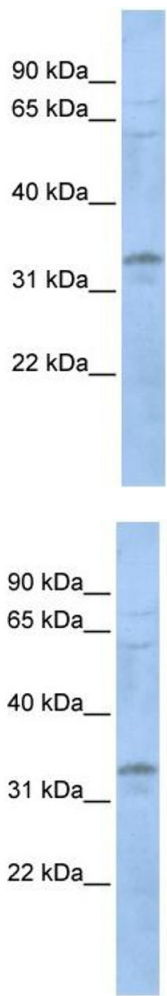
Format:	Liquid
Concentration:	Lot specific
Buffer:	Liquid. Purified antibody supplied in 1x PBS buffer with 0.09 % (w/v) sodium azide and 2 % sucrose.
Preservative:	Sodium azide
Precaution of Use:	This product contains Sodium azide: a POISONOUS AND HAZARDOUS SUBSTANCE which should be handled by trained staff only.
Handling Advice:	Avoid repeated freeze-thaw cycles.
Storage:	-20 °C
Storage Comment:	For short term use, store at 2-8°C up to 1 week. For long term storage, store at -20°C in small

aliquots to prevent freeze-thaw cycles.

Publications

Product cited in: Larkin, Costantino, Seaman, Lavoie: "Calnuc Function in Endosomal Sorting of Lysosomal Receptors." in: **Traffic (Copenhagen, Denmark)**, Vol. 17, Issue 4, pp. 416-32, (2016) ([PubMed](#)).

Images



Western Blotting

**Image 1.** WB Suggested Anti-LYL1  
Antibody Titration: 0.2-1 µg/mL  
Positive Control: 21\_B cell lysate  
LYL1 is supported by BioGPS gene expression data to be expressed in 721\_B

Western Blotting

**Image 2.** WB Suggested Anti-LYL1 Antibody Titration: 0.2-1 ug/ml Positive Control: 721\_B cell lysate LYL1 is supported by BioGPS gene expression data to be expressed in 721\_B