

Datasheet for ABIN2792571  
**anti-CTCF antibody (N-Term)**



[Go to Product page](#)

2 Images

## Overview

Quantity:	100 µL
Target:	CTCF
Binding Specificity:	N-Term
Reactivity:	Human, Mouse, Rat, Cow, Dog, Rabbit, Horse
Host:	Rabbit
Clonality:	Polyclonal
Conjugate:	This CTCF antibody is un-conjugated
Application:	Western Blotting (WB), Chromatin Immunoprecipitation (ChIP)

## Product Details

Immunogen:	The immunogen is a synthetic peptide directed towards the N terminal region of human CTCF
Sequence:	GELPPQEDPS WQKDPDYQPP AKKTKKTKKS KLRYTEEGKD VDVSVYDFEE
Cross-Reactivity:	Cow (Bovine), Dog (Canine), Chicken, Human, Mouse (Murine), Rat (Rattus)
Predicted Reactivity:	Cow: 100%, Dog: 100%, Horse: 100%, Human: 100%, Mouse: 100%, Rabbit: 100%, Rat: 100%
Characteristics:	This is a rabbit polyclonal antibody against CTCF. It was validated on Western Blot using a cell lysate as a positive control.
Purification:	Affinity Purified

## Target Details

Target:	CTCF
---------	------

## Target Details

Alternative Name:	CTCF ( <a href="#">CTCF Products</a> )
Background:	<p>CTCF is a transcriptional regulator protein with 11 highly conserved zinc finger (ZF) domains. This nuclear protein is able to use different combinations of the ZF domains to bind different DNA target sequences and proteins. Depending upon the context of the site, the protein can bind a histone acetyltransferase (HAT)-containing complex and function as a transcriptional activator or bind a histone deacetylase (HDAC)-containing complex and function as a transcriptional repressor. If the protein is bound to a transcriptional insulator element, it can block communication between enhancers and upstream promoters, thereby regulating imprinted expression. Mutations in CTCF have been associated with invasive breast cancers, prostate cancers, and Wilms' tumors. This gene is a member of the BORIS + CTCF gene family and encodes a transcriptional regulator protein with 11 highly conserved zinc finger (ZF) domains. This nuclear protein is able to use different combinations of the ZF domains to bind different DNA target sequences and proteins. Depending upon the context of the site, the protein can bind a histone acetyltransferase (HAT)-containing complex and function as a transcriptional activator or bind a histone deacetylase (HDAC)-containing complex and function as a transcriptional repressor. If the protein is bound to a transcriptional insulator element, it can block communication between enhancers and upstream promoters, thereby regulating imprinted expression. Mutations in this gene have been associated with invasive breast cancers, prostate cancers, and Wilms' tumors.</p> <p>Protein Interaction Partner: ZMYM4, UBC, EED, BMI1, KANSL1, CDK19, ZMYM2, CAND1, ZBTB33, TFAP4, SUMO1, SUMO2, SUMO3, SIRT7, TAF3, SMC3, POLR2A, SUZ12, Ctcf, HIST2H2AC, TOP2A, TAF1, NPM1, LMNA, KPNA4, KPNA2, H2AFZ, PARP1, TRB, RXRA, SMAD3, SIN3A, SMC1A, RAD21, YY1, THRB, SMAD4, HMGB1,</p> <p>Protein Size: 727</p>
Molecular Weight:	83 kDa
Gene ID:	10664
NCBI Accession:	<a href="#">NM_006565</a> , <a href="#">NP_006556</a>
UniProt:	<a href="#">P49711</a>

## Application Details

Application Notes:	<p>WB Suggested Anti-CTCF Antibody Titration: 0.2-1 µg/mL</p> <p>Positive Control: Transfected 293T.</p> <p>Optimal working dilutions should be determined experimentally by the investigator.</p>
--------------------	--

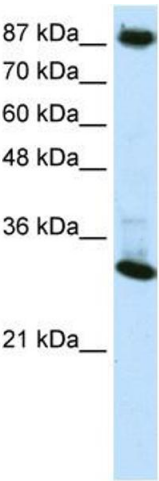
Application Details

Comment:	Antigen size: 727 AA
Restrictions:	For Research Use only

Handling

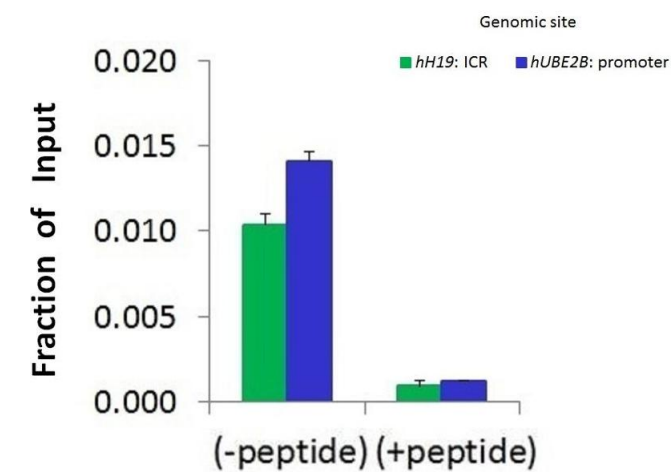
Format:	Liquid
Concentration:	Lot specific
Buffer:	Liquid. Purified antibody supplied in 1x PBS buffer with 0.09 % (w/v) sodium azide and 2 % sucrose.
Preservative:	Sodium azide
Precaution of Use:	This product contains Sodium azide: a POISONOUS AND HAZARDOUS SUBSTANCE which should be handled by trained staff only.
Handling Advice:	Avoid repeated freeze-thaw cycles.
Storage:	-20 °C
Storage Comment:	For short term use, store at 2-8°C up to 1 week. For long term storage, store at -20°C in small aliquots to prevent freeze-thaw cycles.

Images



**Western Blotting**

**Image 1.** WB Suggested Anti-CTCF Antibody Titration: 0.2-1 ug/ml Positive Control: Transfected 293T



Chromatin Immunoprecipitation

**Image 2.** Chromatin Immunoprecipitation (ChIP) Using CTCF antibody - N-terminal region and HCT116 Cells