

Datasheet for ABIN2792592
anti-ETV6 antibody (C-Term)

3 Images

[Go to Product page](#)

Overview

Quantity:	100 µL
Target:	ETV6
Binding Specificity:	C-Term
Reactivity:	Human, Mouse, Rat, Cow, Zebrafish (Danio rerio), Rabbit, Dog, Horse, Guinea Pig
Host:	Rabbit
Clonality:	Polyclonal
Conjugate:	This ETV6 antibody is un-conjugated
Application:	Western Blotting (WB), Immunohistochemistry (IHC)

Product Details

Immunogen:	The immunogen is a synthetic peptide directed towards the C terminal region of human ETV6
Sequence:	VSVSPPEEHA MPIGRIADCR LLWDYVYQLL SDSRYENFIR WEDKESKIFR
Cross-Reactivity:	Cow (Bovine), Dog (Canine), Chicken, Human, Mouse (Murine), Rat (Rattus)
Predicted Reactivity:	Cow: 100%, Dog: 100%, Guinea Pig: 92%, Horse: 100%, Human: 100%, Mouse: 100%, Rabbit: 100%, Rat: 100%, Zebrafish: 92%
Characteristics:	This is a rabbit polyclonal antibody against ETV6. It was validated on Western Blot and immunohistochemistry.
Purification:	Affinity Purified

Target Details

Target:	ETV6
Alternative Name:	ETV6 / TEL1 (ETV6 Products)
Background:	<p>ETV6 (ETS-related protein Tel1, ETS translocation variant 6 , Tel) is an ETS family transcription factor. This protein contains two functional domains: a N-terminal pointed (PNT) domain that is involved in the protein-protein interactions with itself and other proteins, and a C-terminal DNA-binding domain. Gene knockout studies in mice suggest that it is required for hematopoiesis and maintenance of the developing vascular network. This gene is known to be involved in a large number of chromosomal rearrangements associated with leukemia and congenital fibrosarcoma. This gene encodes an ETS family transcription factor. The product of this gene contains two functional domains: a N-terminal pointed (PNT) domain that is involved in the protein-protein interactions with itself and other proteins, and a C-terminal DNA-binding domain. Gene knockout studies in mice suggest that it is required for hematopoiesis and maintenance of the developing vascular network. This gene is known to be involved in a large number of chromosomal rearrangements associated with leukemia and congenital fibrosarcoma. Publication Note: This RefSeq record includes a subset of the publications that are available for this gene. Please see the Entrez Gene record to access additional publications.</p> <p>Alias Symbols: TEL, TEL/ABL</p> <p>Protein Interaction Partner: AP1M1, WDYHV1, UBC, SUMO1, NEDD8, ETV6, SUMO2, PIN1, HDAC6, SOX2, TRAF3, SOCS3, SOCS1, PDGFRB, ELAVL1, UBE2I, NCOR1, SIN3A, HDAC3, L3MBTL1, SMURF1, HDAC9, KAT5, FLI1, IRF8, SKP1, FBXL6, GAB2, GRB2, CRKL, ACTA1,</p> <p>Protein Size: 452</p>
Molecular Weight:	53 kDa
Gene ID:	2120
NCBI Accession:	NM_001987 , NP_001978
UniProt:	P41212

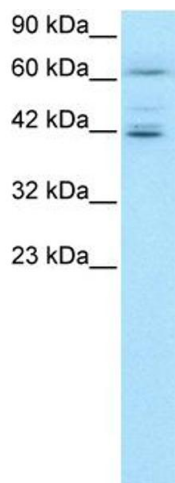
Application Details

Application Notes:	<p>WB Suggested Anti-ETV6 Antibody Titration: 0.2-1 µg/mL</p> <p>ELISA Titer: 1:1562500</p> <p>Positive Control: Jurkat cell lysate.</p> <p>Optimal working dilutions should be determined experimentally by the investigator.</p>
Comment:	Antigen size: 452 AA
Restrictions:	For Research Use only

Handling

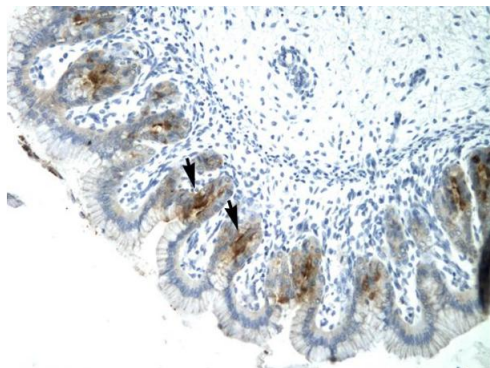
Format:	Liquid
Concentration:	Lot specific
Buffer:	Liquid. Purified antibody supplied in 1x PBS buffer with 0.09 % (w/v) sodium azide and 2 % sucrose.
Preservative:	Sodium azide
Precaution of Use:	This product contains Sodium azide: a POISONOUS AND HAZARDOUS SUBSTANCE which should be handled by trained staff only.
Handling Advice:	Avoid repeated freeze-thaw cycles.
Storage:	-20 °C
Storage Comment:	For short term use, store at 2-8°C up to 1 week. For long term storage, store at -20°C in small aliquots to prevent freeze-thaw cycles.

Images



Western Blotting

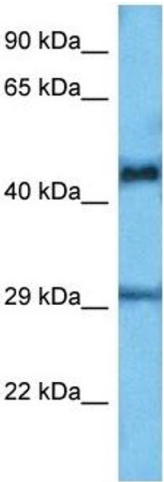
Image 1. WB Suggested Anti-ETV6 Antibody Titration: 0.2-1 ug/ml ELISA Titer: 1:1562500 Positive Control: Jurkat cell lysate



Rabbit Anti-ETV6 Antibody
Catalog Number: P100807
Lot Number: QC0807BG
Paraffin Embedded Tissue: Human Stomach
Cells with Positive label: Epithelial cells of fundic glands (Indicated with Arrows)
Antibody Concentration: 4.0-8.0 µg/ml
Magnification: 400X

Immunohistochemistry

Image 2. Human Stomach



Western Blotting

Image 3. Host: Mouse Target Name: ETV6 Sample Tissue: Mouse Small Intestine Antibody Dilution: 1ug/ml