

Datasheet for ABIN2792593
anti-TFEB antibody (Middle Region)



[Go to Product page](#)

2 Images

Overview

Quantity:	100 µL
Target:	TFEB
Binding Specificity:	Middle Region
Reactivity:	Human, Mouse, Rat, Cow, Dog, Pig, Horse, Goat, Rabbit, Guinea Pig
Host:	Rabbit
Clonality:	Polyclonal
Conjugate:	This TFEB antibody is un-conjugated
Application:	Western Blotting (WB)

Product Details

Immunogen:	The immunogen is a synthetic peptide directed towards the middle region of human TFEB
Sequence:	IKELGMLIPK ANDLDVRWNK GTILKASVDY IRRMQKDLQK SRELENHSRR
Cross-Reactivity:	Chicken, Human, Mouse (Murine), Rabbit, Rat (Rattus)
Predicted Reactivity:	Cow: 100%, Dog: 92%, Goat: 100%, Guinea Pig: 92%, Horse: 100%, Human: 100%, Mouse: 100%, Pig: 100%, Rabbit: 100%, Rat: 100%
Characteristics:	This is a rabbit polyclonal antibody against TFEB. It was validated on Western Blot using a cell lysate as a positive control.
Purification:	Affinity Purified

Target Details

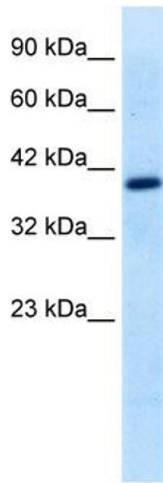
Target:	TFEB
Alternative Name:	TFEB (TFEB Products)
Background:	<p>The TFEB gene fuses with an intronless gene in renal tumors harboring the t(6,11)(p21,q13) chromosome translocation. It encodes a protein that is a highly sensitive and specific diagnostic marker for renal neoplasms.</p> <p>Protein Interaction Partner: SRPK1, YWHAQ, TFEC, TFE3, MITF,</p> <p>Protein Size: 476</p>
Molecular Weight:	53 kDa
Gene ID:	7942

Application Details

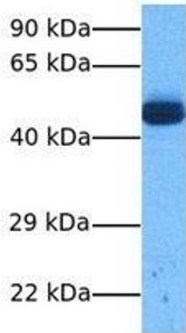
Application Notes:	<p>WB Suggested Anti-TFEB Antibody Titration: 0.2-1 µg/mL</p> <p>Positive Control: HepG2 cell lysate.</p> <p>Optimal working dilutions should be determined experimentally by the investigator.</p>
Comment:	Antigen size: 476 AA
Restrictions:	For Research Use only

Handling

Format:	Liquid
Concentration:	Lot specific
Buffer:	Liquid. Purified antibody supplied in 1x PBS buffer with 0.09 % (w/v) sodium azide and 2 % sucrose.
Preservative:	Sodium azide
Precaution of Use:	This product contains Sodium azide: a POISONOUS AND HAZARDOUS SUBSTANCE which should be handled by trained staff only.
Handling Advice:	Avoid repeated freeze-thaw cycles.
Storage:	-20 °C
Storage Comment:	For short term use, store at 2-8°C up to 1 week. For long term storage, store at -20°C in small aliquots to prevent freeze-thaw cycles.



TFEB



Western Blotting

Image 1. WB Suggested Anti-TFEB Antibody Titration: 0.2-1 ug/ml Positive Control: HepG2 cell lysate

Western Blotting

Image 2. Host: Rabbit Target Name: TFEB Sample Tissue: Human Lung Tumor Antibody Dilution: 1.0ug/ml