



[Go to Product page](#)

Datasheet for ABIN2792594
anti-GTF2F1 antibody (N-Term)

2 Images

Overview

Quantity:	100 µL
Target:	GTF2F1
Binding Specificity:	N-Term
Reactivity:	Human, Mouse, Dog, Guinea Pig, Rabbit, Zebrafish (Danio rerio)
Host:	Rabbit
Clonality:	Polyclonal
Conjugate:	This GTF2F1 antibody is un-conjugated
Application:	Western Blotting (WB)

Product Details

Immunogen:	The immunogen is a synthetic peptide directed towards the N terminal region of human GTF2F1
Sequence:	MAALGPSSQN VTEYVVRVPK NTTKKYNIMA FNAADKVNFA TWNQARLERD
Cross-Reactivity:	Cow (Bovine), Dog (Canine), Human, Mouse (Murine), Rat (Rattus)
Predicted Reactivity:	Dog: 100%, Guinea Pig: 100%, Human: 100%, Mouse: 85%, Rabbit: 100%, Zebrafish: 85%
Characteristics:	This is a rabbit polyclonal antibody against GTF2F1. It was validated on Western Blot using a cell lysate as a positive control.
Purification:	Affinity Purified

Target Details

Target:	GTF2F1
Alternative Name:	GTF2F1 / RAP74 (GTF2F1 Products)
Background:	<p>GTF2F1 is a general transcription initiation factor that binds to RNA polymerase II and helps to recruit it to the initiation complex in collaboration with TFIIB. It promotes transcription elongation.</p> <p>Alias Symbols: BTF4, RAP74, TF2F1, TFIIF</p> <p>Protein Interaction Partner: ABL1, UBC, tat, PUS1, DUS3L, VPS29, SNF8, PSAP, BCAT1, TCEA1, GTF2B, POLR2C, GTF2F2, CDC73, MMS19, SF3A3, SRSF9, COIL, SNRPA, POLR2A, EEF1B2, CIRBP, CDK9, POLR2D, GTF2H1, GTF2E1, ERCC2, CDK8, CCNC, MAGEC1, TAF1, HNRNPU, FCP1, CSNK2A1, CCNT1, Gtf3c6, POLR2</p> <p>Protein Size: 517</p>
Molecular Weight:	58 kDa
Gene ID:	2962
NCBI Accession:	NM_002096 , NP_002087
UniProt:	P35269

Application Details

Application Notes:	<p>WB Suggested Anti-GTF2F1 Antibody Titration: 0.2-1 µg/mL</p> <p>Positive Control: K562 cell lysate.</p> <p>Optimal working dilutions should be determined experimentally by the investigator.</p>
Comment:	Antigen size: 517 AA
Restrictions:	For Research Use only

Handling

Format:	Liquid
Concentration:	Lot specific
Buffer:	Liquid. Purified antibody supplied in 1x PBS buffer with 0.09 % (w/v) sodium azide and 2 % sucrose.
Preservative:	Sodium azide
Precaution of Use:	This product contains Sodium azide: a POISONOUS AND HAZARDOUS SUBSTANCE which should be handled by trained staff only.

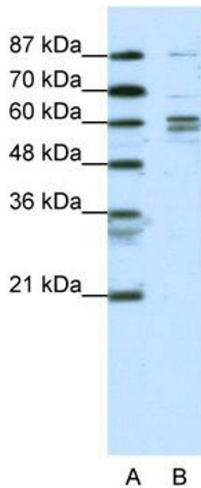
Handling

Handling Advice: Avoid repeated freeze-thaw cycles.

Storage: -20 °C

Storage Comment: For short term use, store at 2-8°C up to 1 week. For long term storage, store at -20°C in small aliquots to prevent freeze-thaw cycles.

Images



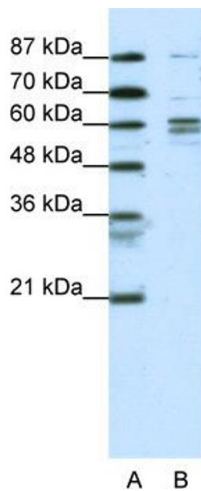
Western Blotting

Image 1. WB Suggested Anti-GTF2F1

Antibody Titration: 0.2-1 µg/mL

Positive Control: K562 cell lysate

There is BioGPS gene expression data showing that GTF2F1 is expressed in K562



Western Blotting

Image 2. WB Suggested Anti-GTF2F1 Antibody Titration:

0.2-1 ug/ml Positive Control: K562 cell lysate

There is BioGPS gene expression data showing that GTF2F1 is expressed in K562