

Datasheet for ABIN2792596
anti-NR2C1 antibody (C-Term)[Go to Product page](#)

2 Images

Overview

Quantity:	100 µL
Target:	NR2C1
Binding Specificity:	C-Term
Reactivity:	Human, Mouse, Rat, Dog, Horse, Rabbit, Cow, Guinea Pig, Pig
Host:	Rabbit
Clonality:	Polyclonal
Conjugate:	This NR2C1 antibody is un-conjugated
Application:	Western Blotting (WB)

Product Details

Immunogen:	The immunogen is a synthetic peptide directed towards the C terminal region of human NR2C1
Sequence:	QEKAYVEFQD YITKTYPDDT YRLSRLLLLRL PALRLMNATI TEELFFKGLI
Cross-Reactivity:	Cow (Bovine), Dog (Canine), Chicken, Human, Mouse (Murine), Rat (Rattus)
Predicted Reactivity:	Cow: 100%, Dog: 100%, Guinea Pig: 92%, Horse: 100%, Human: 100%, Mouse: 92%, Pig: 100%, Rabbit: 100%, Rat: 92%
Characteristics:	This is a rabbit polyclonal antibody against NR2C1. It was validated on Western Blot using a cell lysate as a positive control.
Purification:	Protein A purified

Target Details

Target:	NR2C1
Alternative Name:	NR2C1 (NR2C1 Products)
Background:	<p>The nuclear orphan receptors NR2C1 represses transcription and binds DNA as a homodimer. NR2C1 binds the IR7 element in the promoter of its own gene in an autoregulatory negative feedback mechanism. NR2C1 may function as a negative modulator to suppress androgen receptor function in prostate cancer. NR2C1 may exert an important repressor in regulating ER activity in mammary glands. The nuclear orphan receptors TR2 (NR2C1) and TR4 form a heterodimer that binds to the epsilon and gamma globin promoter DR1 sites</p> <p>Alias Symbols: TR2</p> <p>Protein Interaction Partner: PSPC1, MBD3, SIN3A, RCOR1, KDM1A, POLD3, TRIM28, RBM39, MTA2, MTA1, HDAC3, NR2C2, SMARCA4, SFPQ, RBBP7, RBBP4, NONO, HDAC2, HDAC1, HCFC1, DNMT1, CHD4, NUDT3, UBC, PML, HDAC4, NRIP1, AR, ESR1,</p> <p>Protein Size: 603</p>
Molecular Weight:	67 kDa
Gene ID:	7181
NCBI Accession:	NM_003297 , NP_003288
UniProt:	Q15625
Pathways:	Nuclear Receptor Transcription Pathway , Retinoic Acid Receptor Signaling Pathway , Steroid Hormone Mediated Signaling Pathway

Application Details

Application Notes:	<p>WB Suggested Anti-NR2C1 Antibody Titration: 2.5 µg/mL</p> <p>ELISA Titer: 1:312500</p> <p>Positive Control: HCT15 cell lysate.</p> <p>Optimal working dilutions should be determined experimentally by the investigator.</p>
Comment:	Antigen size: 603 AA
Restrictions:	For Research Use only

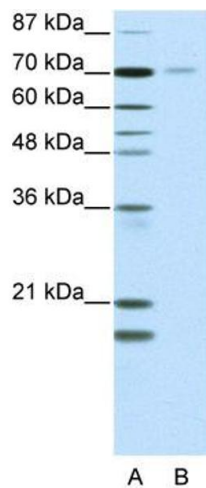
Handling

Format:	Liquid
Concentration:	Lot specific

Handling

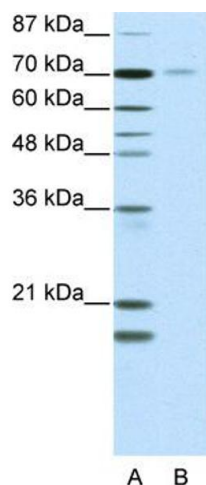
Buffer:	Liquid. Purified antibody supplied in 1x PBS buffer with 0.09 % (w/v) sodium azide and 2 % sucrose.
Preservative:	Sodium azide
Precaution of Use:	This product contains Sodium azide: a POISONOUS AND HAZARDOUS SUBSTANCE which should be handled by trained staff only.
Handling Advice:	Avoid repeated freeze-thaw cycles.
Storage:	-20 °C
Storage Comment:	For short term use, store at 2-8°C up to 1 week. For long term storage, store at -20°C in small aliquots to prevent freeze-thaw cycles.

Images



Western Blotting

Image 1. WB Suggested Anti-NR2C1 Antibody Titration: 2.5ug/ml ELISA Titer: 1:312500 Positive Control: HCT15 cell lysate There is BioGPS gene expression data showing that NR2C1 is expressed in HCT15



Western Blotting

Image 2. WB Suggested Anti-NR2C1 Antibody Titration: 2.5 µg/mL ELISA Titer: 1:12500 Positive Control: HCT15 cell lysate There is BioGPS gene expression data showing that NR2C1 is expressed in HCT15