

Datasheet for ABIN2792599

anti-NR2F2 antibody (N-Term)

8 Images

1 Publication

[Go to Product page](#)

Overview

Quantity:	100 µL
Target:	NR2F2
Binding Specificity:	N-Term
Reactivity:	Human, Mouse, Rat, Dog, Cow, Pig, Rabbit, Zebrafish (Danio rerio), Sheep
Host:	Rabbit
Clonality:	Polyclonal
Conjugate:	This NR2F2 antibody is un-conjugated
Application:	Western Blotting (WB), Immunohistochemistry (IHC)

Product Details

Immunogen:	The immunogen is a synthetic peptide directed towards the N terminal region of human NR2F2
Sequence:	KVGMRREAVQ RGRMPPTQPT HGQFALTNGD PLNCHSYLSG YISLLLRAEP
Cross-Reactivity:	Cow (Bovine), Dog (Canine), Chicken, Human, Mouse (Murine), Pig (Porcine), Rat (Rattus)
Predicted Reactivity:	Cow: 92%, Dog: 100%, Human: 100%, Mouse: 100%, Pig: 100%, Rabbit: 100%, Rat: 100%, Sheep: 92%, Zebrafish: 92%
Characteristics:	This is a rabbit polyclonal antibody against NR2F2. It was validated on Western Blot and immunohistochemistry.
Purification:	Affinity Purified

Target Details

Target:	NR2F2
Alternative Name:	NR2F2 (NR2F2 Products)
Background:	<p>NR2F2, an orphan member of the nuclear hormone receptor superfamily, acts as a transcriptional repressor by antagonizing the functions of other nuclear hormone receptors and by actively silencing transcription. However, in certain contexts, NR2F2 stimulates transcription directly. NR2F2, MyoD and p300 interact in a competitive manner, and that increasing amounts of NR2F2 have the ability to reduce the interaction between myoD and p300 invitro. NR2F2 post-transcriptionally regulates myoD activity/function, and that crosstalk between orphan nuclear receptors and the myogenic bHLH proteins has functional consequences for differentiation.</p> <p>Alias Symbols: ARP1, COUP-TFII, COUPTFB, MGC117452, SVP40, TFCOUP2, NF-E3, NR2F1, COUPTFII</p> <p>Protein Interaction Partner: NSD1, BCL11A, NR2F2, BIK, SETD7, FAM46A, HIPK3, UBC, TFAP4, Cebpb, SMARCAD1, NR2F6, POU5F1, NR3C1, PHB2, TRIP4, PIAS1, BCL11B, TRIM24, EP300, SQSTM1, HDAC1, NCOR2, MYOD1, LCK,</p> <p>Protein Size: 414</p>
Molecular Weight:	45 kDa
Gene ID:	7026
NCBI Accession:	NM_021005 , NP_066285
UniProt:	P24468
Pathways:	Steroid Hormone Mediated Signaling Pathway

Application Details

Application Notes:	WB Suggested Anti-NR2F2 Antibody Titration: 0.2-1 µg/mL ELISA Titer: 1:312500 Positive Control: Transfected 293T. Optimal working dilutions should be determined experimentally by the investigator.
Comment:	Antigen size: 414 AA
Restrictions:	For Research Use only

Handling

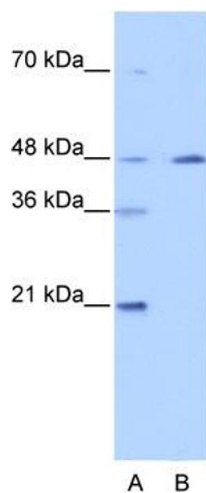
Format:	Liquid
---------	--------

Handling

Concentration:	Lot specific
Buffer:	Liquid. Purified antibody supplied in 1x PBS buffer with 0.09 % (w/v) sodium azide and 2 % sucrose.
Preservative:	Sodium azide
Precaution of Use:	This product contains Sodium azide: a POISONOUS AND HAZARDOUS SUBSTANCE which should be handled by trained staff only.
Handling Advice:	Avoid repeated freeze-thaw cycles.
Storage:	-20 °C
Storage Comment:	For short term use, store at 2-8°C up to 1 week. For long term storage, store at -20°C in small aliquots to prevent freeze-thaw cycles.

Publications

Product cited in:	<p>Bonito-Oliva, Barbash, Sakmar, Graham: "Nucleobindin 1 binds to multiple types of pre-fibrillar amyloid and inhibits fibrillization." in: Scientific reports, Vol. 7, pp. 42880, (2017) (PubMed).</p> <p>Larkin, Ribeiro, Lavoie: "Topology and membrane anchoring of the lysosomal storage disease-related protein CLN5." in: Human mutation, Vol. 34, Issue 12, pp. 1688-97, (2013) (PubMed).</p> <p>Lin, Fischer, Lavoie, Huang, Farquhar: "Calnuc plays a role in dynamic distribution of Galphai but not Gbeta subunits and modulates ACTH secretion in AtT-20 neuroendocrine secretory cells." in: Molecular neurodegeneration, Vol. 4, pp. 15, (2009) (PubMed).</p> <p>Valencia, Cotten, Duan, Liu: "Modulation of nucleobindin-1 and nucleobindin-2 by caspases." in: FEBS letters, Vol. 582, Issue 2, pp. 286-90, (2008) (PubMed).</p> <p>Sugeno, Takeda, Hasegawa, Kobayashi, Kikuchi, Mori, Wakabayashi, Itoyama: "Serine 129 phosphorylation of alpha-synuclein induces unfolded protein response-mediated cell death." in: The Journal of biological chemistry, Vol. 283, Issue 34, pp. 23179-88, (2008) (PubMed).</p>
-------------------	---



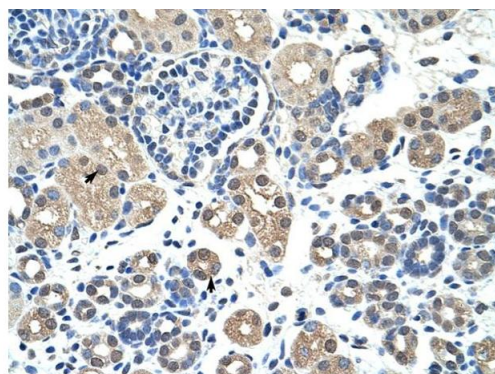
Western Blotting

Image 1. WB Suggested Anti-NR2F2 Antibody Titration:

0.2-1 ug/ml

ELISA Titer: 1:312500

Positive Control: Transfected 293T



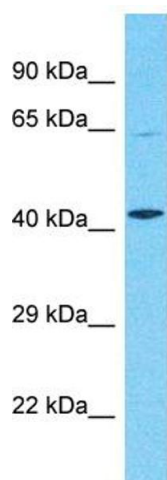
Rabbit Anti-NR2F2 Antibody
Catalog Number: P100816
Lot Number: QC0816
Paraffin Embedded Tissue: Human Kidney
Cells with Positive label: Epithelial cells of renal tubule (Indicated with Arrows)
Antibody Concentration: 4.0-8.0 µg/ml
Magnification: 400X

Immunohistochemistry

Image 2. Rabbit Anti-NR2F2 Antibody Paraffin Embedded

Tissue: Human alveolar cell Cellular Data: Epithelial cells of renal tubule Antibody Concentration: 4.0-8.0 ug/ml

Magnification: 400X



Host: Rabbit

Target Name: NR2F2

Sample Tissue: MCF7 Cell Lysate

Antibody Dilution: 1.0µg/ml

Western Blotting

Image 3. Host: Rabbit Target Name: NR2F2 Sample Type:

MCF7 Whole Cell lysates Antibody Dilution: 1.0ug/ml

Please check the [product details page](#) for more images. Overall 8 images are available for ABIN2792599.