

Datasheet for ABIN2792602
anti-DP1 antibody (N-Term)[Go to Product page](#)

3 Images

Overview

Quantity:	100 µL
Target:	DP1 (TFDP1)
Binding Specificity:	N-Term
Reactivity:	Human, Mouse, Cow
Host:	Rabbit
Clonality:	Polyclonal
Conjugate:	This DP1 antibody is un-conjugated
Application:	Western Blotting (WB), Immunohistochemistry (IHC), Immunofluorescence (IF)

Product Details

Immunogen:	The immunogen is a synthetic peptide directed towards the N terminal region of human TFDP1
Sequence:	VIGTPQRPAASNTLVVGSPH TPSTHFASQN QPSDSSPWSA GKRNRKGEKN
Cross-Reactivity:	Cow (Bovine), Human, Mouse (Murine), Rat (Rattus)
Predicted Reactivity:	Cow: 92%, Human: 100%, Mouse: 92%
Characteristics:	This is a rabbit polyclonal antibody against TFDP1. It was validated on Western Blot and immunohistochemistry.
Purification:	Affinity Purified

Target Details

Target:	DP1 (TFDP1)
---------	-------------

Target Details

Alternative Name:	TFDP1 (TFDP1 Products)
Background:	<p>The E2F transcription factor family regulates the expression of various cellular promoters, particularly those involved in the cell cycle. E2F factors bind to DNA as homodimers or heterodimers in association with dimerization partner DP1. TFDP1 may be the first example of a family of related transcription factors and may have a role in progression of some hepatocellular carcinomas by promoting growth of the tumor cells.</p> <p>Alias Symbols: DP1, Dp-1, DRTF1</p> <p>Protein Interaction Partner: UBC, E2F6, E2F4, SIAH1, E2F3, E2F2, E2F1, CDK6, PRPF31, CDK2, CDK1, SOCS3, RB1, PCGF6, RYBP, YAF2, RNF2, ELAVL1, LIN9, LIN54, LIN37, RBL2, SERTAD2, NPDC1, E2F5, TP53, RBL1, CDK3, TP53BP1,</p> <p>Protein Size: 410</p>
Molecular Weight:	45 kDa
Gene ID:	7027
NCBI Accession:	NM_007111 , NP_009042
UniProt:	Q14186
Pathways:	Cell Division Cycle , Mitotic G1-G1/S Phases

Application Details

Application Notes:	<p>WB Suggested Anti-TFDP1 Antibody Titration: 0.2-1 µg/mL</p> <p>Positive Control: Human Liver.</p> <p>Optimal working dilutions should be determined experimentally by the investigator.</p>
Comment:	Antigen size: 410 AA
Restrictions:	For Research Use only

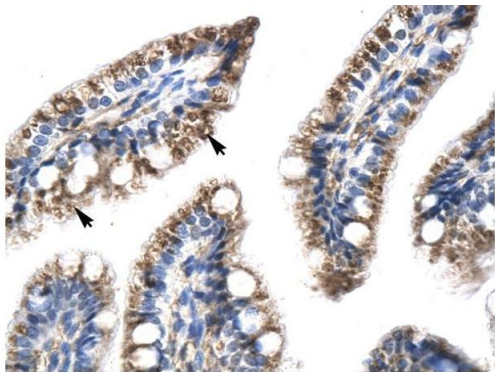
Handling

Format:	Liquid
Concentration:	Lot specific
Buffer:	Liquid. Purified antibody supplied in 1x PBS buffer with 0.09 % (w/v) sodium azide and 2 % sucrose.
Preservative:	Sodium azide
Precaution of Use:	This product contains Sodium azide: a POISONOUS AND HAZARDOUS SUBSTANCE which

Handling

	should be handled by trained staff only.
Handling Advice:	Avoid repeated freeze-thaw cycles.
Storage:	-20 °C
Storage Comment:	For short term use, store at 2-8°C up to 1 week. For long term storage, store at -20°C in small aliquots to prevent freeze-thaw cycles.

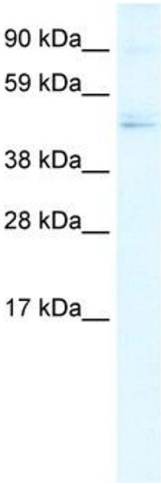
Images



Rabbit Anti-TFDP1 Antibody
Catalog Number: P100820
Lot Number: QC0820
Paraffin Embedded Tissue: Human Intestine
Cells with Positive label: Epithelial cells of intestinal villus(Indicated with Arrows)
Antibody Concentration: 4.0-8.0 µg/ml
Magnification: 400X

Immunohistochemistry

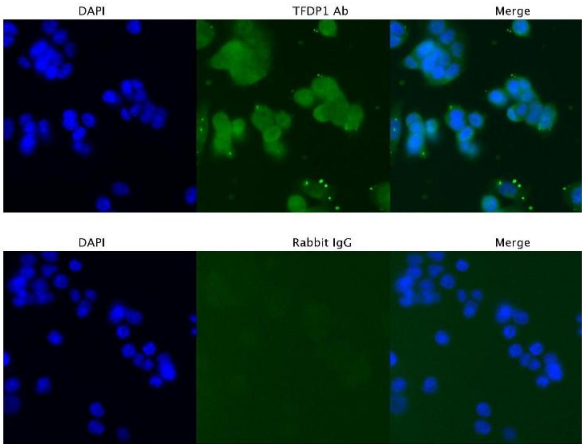
Image 1. Human Intestine



Western Blotting

Image 2. WB Suggested Anti-TFDP1 Antibody Titration: 0.2-1 ug/ml Positive Control: Human Liver

TFDP1 in HCT116 Cells



Immunofluorescence

Image 3. Sample Type : HCT116 Primary Antibody Dilution: 4 ug/ml Secondary Antibody : Anti-rabbit Alexa 546 Secondary Antibody Dilution: 2 ug/ml Gene Name : TFDP1