



[Go to Product page](#)

Datasheet for ABIN2792604
anti-EVX1 antibody (N-Term)

4 Images

Overview

Quantity:	100 µL
Target:	EVX1
Binding Specificity:	N-Term
Reactivity:	Human, Mouse, Rat, Cow, Guinea Pig, Dog, Rabbit
Host:	Rabbit
Clonality:	Polyclonal
Conjugate:	This EVX1 antibody is un-conjugated
Application:	Western Blotting (WB), Immunohistochemistry (IHC)

Product Details

Immunogen:	The immunogen is a synthetic peptide directed towards the N terminal region of human EVX1
Sequence:	AGSAAGPGAE PQVAGAAMLG PGPPAPSVDS LSGQGQPSSS DTESDFYEEI
Cross-Reactivity:	Cow (Bovine), Dog (Canine), Chicken, Human, Mouse (Murine), Rabbit, Rat (Rattus)
Predicted Reactivity:	Cow: 100%, Dog: 100%, Guinea Pig: 100%, Human: 100%, Mouse: 100%, Rabbit: 100%, Rat: 100%
Characteristics:	This is a rabbit polyclonal antibody against EVX1. It was validated on Western Blot and immunohistochemistry.
Purification:	Protein A purified

Target Details

Target:	EVX1
---------	------

Target Details

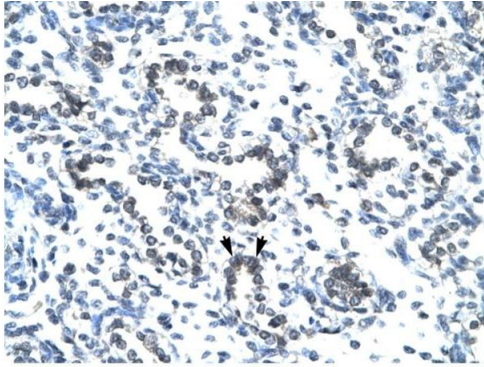
Alternative Name:	EVX1 (EVX1 Products)
Background:	<p>EVX1 is a member of the vertebrate eve-related homeo box family. This protein acts as a transcriptional repressor. A similar protein in mice is critical for early embryogenesis.</p> <p>Protein Interaction Partner: RAD21,</p> <p>Protein Size: 407</p>
Molecular Weight:	42 kDa
Gene ID:	2128
NCBI Accession:	NM_001989, NP_001980
UniProt:	P49640

Application Details

Application Notes:	<p>WB Suggested Anti-EVX1 Antibody Titration: 1.0-2.0 µg/mL</p> <p>Positive Control: Jurkat cell lysate.</p> <p>Optimal working dilutions should be determined experimentally by the investigator.</p>
Comment:	Antigen size: 407 AA
Restrictions:	For Research Use only

Handling

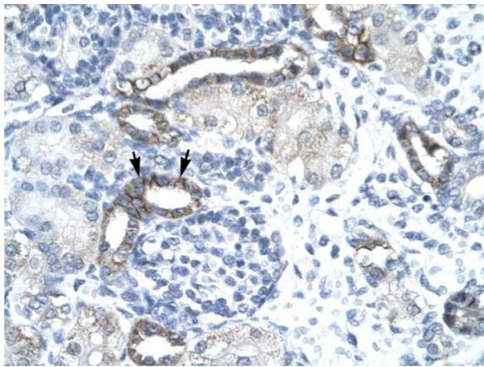
Format:	Liquid
Concentration:	Lot specific
Buffer:	Liquid. Purified antibody supplied in 1x PBS buffer with 0.09 % (w/v) sodium azide and 2 % sucrose.
Preservative:	Sodium azide
Precaution of Use:	This product contains Sodium azide: a POISONOUS AND HAZARDOUS SUBSTANCE which should be handled by trained staff only.
Handling Advice:	Avoid repeated freeze-thaw cycles.
Storage:	-20 °C
Storage Comment:	For short term use, store at 2-8°C up to 1 week. For long term storage, store at -20°C in small aliquots to prevent freeze-thaw cycles.



Rabbit Anti-EVX1 Antibody
Catalog Number: P100830
Lot Number: QC0830
Paraffin Embedded Tissue: Human Lung
Cells with Positive label: Alveolar cells (Indicated with Arrows)
Antibody Concentration: 4.0-8.0 µg/ml
Magnification: 400X

Immunohistochemistry

Image 1. Human Lung

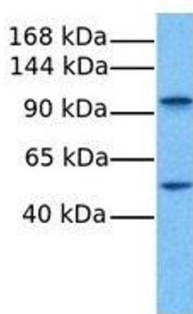


Rabbit Anti-EVX1 Antibody
Catalog Number: P100830
Lot Number: QC0830
Paraffin Embedded Tissue: Human Kidney
Cells with Positive label: Epithelial cells of renal tubule (Indicated with Arrows)
Antibody Concentration: 4.0-8.0 µg/ml
Magnification: 400X

Immunohistochemistry

Image 2. Human kidney

EVX1



Western Blotting

Image 3. Host: Rabbit Target Name: EVX1 Sample Tissue:
Human Fetal Lung Antibody Dilution: 1.0ug/ml

Please check the [product details page](#) for more images. Overall 4 images are available for ABIN2792604.