

Datasheet for ABIN2792607

anti-GATA1 antibody (N-Term)[Go to Product page](#)**1** Image**1** Publication

Overview

Quantity:	100 µL
Target:	GATA1
Binding Specificity:	N-Term
Reactivity:	Human, Mouse, Rat, Dog, Sheep, Cow, Rabbit, Guinea Pig
Host:	Rabbit
Clonality:	Polyclonal
Conjugate:	This GATA1 antibody is un-conjugated
Application:	Western Blotting (WB)

Product Details

Immunogen:	The immunogen is a synthetic peptide directed towards the N terminal region of human GATA1
Sequence:	SGPEGLDAAA SSTAPSTAT AAAAAAYYRD AEAYRHSPVF QVYPLLNCME
Cross-Reactivity:	Cow (Bovine), Dog (Canine), Human, Mouse (Murine), Rat (Rattus)
Predicted Reactivity:	Cow: 100%, Dog: 100%, Guinea Pig: 100%, Human: 100%, Mouse: 92%, Rabbit: 100%, Rat: 92%, Sheep: 100%
Characteristics:	This is a rabbit polyclonal antibody against GATA1. It was validated on Western Blot using a cell lysate as a positive control.
Purification:	Affinity Purified

Target Details

Target:	GATA1
Alternative Name:	GATA1 (GATA1 Products)
Background:	<p>GATA1 is a protein which belongs to the GATA family of transcription factors. The protein plays an important role in erythroid development by regulating the switch of fetal hemoglobin to adult hemoglobin. Mutations in this gene have been associated with X-linked dyserythropoietic anemia and thrombocytopenia. This gene encodes a protein which belongs to the GATA family of transcription factors. The protein plays an important role in erythroid development by regulating the switch of fetal hemoglobin to adult hemoglobin. Mutations in this gene have been associated with X-linked dyserythropoietic anemia and thrombocytopenia. Publication Note: This RefSeq record includes a subset of the publications that are available for this gene. Please see the Entrez Gene record to access additional publications.</p> <p>Alias Symbols: ERYF1, GF1, NFE1, GF-1, XLTT, GATA-1</p> <p>Protein Interaction Partner: KRTAP10-5, CCDC24, HEXIM2, FBF1, KRTAP9-2, RADIL, FRS3, PRKAB2, HSPB1, HOXA1, AKT1, SPIB, SPI1, PRKAA1, HSPA4, FLI1, CASP3, SRA1, SUMO1, CEBPE, MAPK6, UBC, SKI, NME1, RAI1, ZBTB22, TRIM25, TAF7, TAX1BP3, ZZZ3, TRIM29, IKZF1, Rb1, ZFPM1, ZNF521, ZBTB16, HD</p> <p>Protein Size: 413</p>
Molecular Weight:	43 kDa
Gene ID:	2623
NCBI Accession:	NM_002049 , NP_002040
UniProt:	P15976
Pathways:	Cellular Response to Molecule of Bacterial Origin

Application Details

Application Notes:	<p>WB Suggested Anti-GATA1 Antibody Titration: 0.2-1 µg/mL</p> <p>ELISA Titer: 1:312500</p> <p>Positive Control: MCF7 cell lysate.</p> <p>Optimal working dilutions should be determined experimentally by the investigator.</p>
Comment:	Antigen size: 413 AA
Restrictions:	For Research Use only

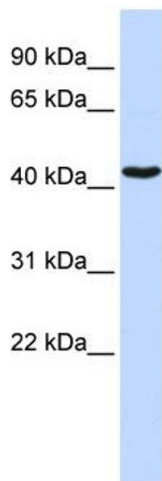
Handling

Format:	Liquid
Concentration:	Lot specific
Buffer:	Liquid. Purified antibody supplied in 1x PBS buffer with 0.09 % (w/v) sodium azide and 2 % sucrose.
Preservative:	Sodium azide
Precaution of Use:	This product contains Sodium azide: a POISONOUS AND HAZARDOUS SUBSTANCE which should be handled by trained staff only.
Handling Advice:	Avoid repeated freeze-thaw cycles.
Storage:	-20 °C
Storage Comment:	For short term use, store at 2-8°C up to 1 week. For long term storage, store at -20°C in small aliquots to prevent freeze-thaw cycles.

Publications

Product cited in:	de Vooght, van Wijk, van Solinge: "GATA-1 binding sites in exon 1 direct erythroid-specific transcription of PPOX." in: Gene , Vol. 409, Issue 1-2, pp. 83-91, (2008) (PubMed).
-------------------	--

Images



Western Blotting

Image 1. WB Suggested Anti-GATA1 Antibody Titration: 0.2-1 ug/ml ELISA Titer: 1:312500 Positive Control: MCF7 cell lysate