

Datasheet for ABIN2792608
anti-GCM1 antibody (N-Term)[5 Images](#)[6 Publications](#)[Go to Product page](#)

Overview

Quantity:	100 µL
Target:	GCM1
Binding Specificity:	N-Term
Reactivity:	Human, Mouse, Rat, Dog
Host:	Rabbit
Clonality:	Polyclonal
Conjugate:	This GCM1 antibody is un-conjugated
Application:	Western Blotting (WB), Immunohistochemistry (IHC)

Product Details

Immunogen:	The immunogen is a synthetic peptide directed towards the N terminal region of human GCM1
Sequence:	MEPDDFDSED KEILSWDIND VKLPQNVKKT DWFQEWPDYS AKHIYSSDK
Cross-Reactivity:	Dog (Canine), Human, Mouse (Murine), Rat (Rattus)
Predicted Reactivity:	Dog: 78%, Human: 92%, Mouse: 78%, Rat: 78%
Characteristics:	This is a rabbit polyclonal antibody against GCM1. It was validated on Western Blot and immunohistochemistry.
Purification:	Affinity Purified

Target Details

Target:	GCM1
---------	------

Target Details

Alternative Name:	GCM1 / GCMA (GCM1 Products)
Background:	<p>GCM1 is a DNA-binding protein with a gcm-motif (glial cell missing motif). The encoded protein is a homolog of the Drosophila glial cells missing gene (gcm). This protein binds to the GCM-motif (A/G)CCCGCAT, a novel sequence among known targets of DNA-binding proteins. The N-terminal DNA-binding domain confers the unique DNA-binding activity of this protein. This gene encodes a DNA-binding protein with a gcm-motif (glial cell missing motif). The encoded protein is a homolog of the Drosophila glial cells missing gene (gcm). This protein binds to the GCM-motif (A/G)CCCGCAT, a novel sequence among known targets of DNA-binding proteins. The N-terminal DNA-binding domain confers the unique DNA-binding activity of this protein.</p> <p>Publication Note: This RefSeq record includes a subset of the publications that are available for this gene. Please see the Entrez Gene record to access additional publications.</p> <p>PRIMARYREFSEQ_SPAN PRIMARY_IDENTIFIER PRIMARY_SPAN COMP 1-132 D88613.1 1-132 133-2763 AB026493.1 1-2631</p> <p>Alias Symbols: GCMA, hGCMA</p> <p>Protein Interaction Partner: FBXW2, UBC, SENP1, CAMK1, SUMO1, DUSP23, CREBBP, HDAC5, HDAC4, HDAC3, HDAC1, CUL1, SKP1, UBE2I,</p> <p>Protein Size: 436</p>
Molecular Weight:	49 kDa
Gene ID:	8521
NCBI Accession:	NM_003643 , NP_003634
UniProt:	Q9NP62

Application Details

Application Notes:	<p>WB Suggested Anti-GCM1 Antibody Titration: 0.2-1 µg/mL</p> <p>ELISA Titer: 1:7812500</p> <p>Positive Control: Human Placenta.</p> <p>Optimal working dilutions should be determined experimentally by the investigator.</p>
Comment:	Antigen size: 436 AA
Restrictions:	For Research Use only

Handling

Format:	Liquid
---------	--------

Handling

Concentration:	Lot specific
Buffer:	Liquid. Purified antibody supplied in 1x PBS buffer with 0.09 % (w/v) sodium azide and 2 % sucrose.
Preservative:	Sodium azide
Precaution of Use:	This product contains Sodium azide: a POISONOUS AND HAZARDOUS SUBSTANCE which should be handled by trained staff only.
Handling Advice:	Avoid repeated freeze-thaw cycles.
Storage:	-20 °C
Storage Comment:	For short term use, store at 2-8°C up to 1 week. For long term storage, store at -20°C in small aliquots to prevent freeze-thaw cycles.

Publications

Product cited in: Reid, van Roon-Mom, Wood, Rees, Owen, Faull, Dragunow, Snell: "TBP, a polyglutamine tract containing protein, accumulates in Alzheimer's disease." in: **Brain research. Molecular brain research**, Vol. 125, Issue 1-2, pp. 120-8, (2004) ([PubMed](#)).

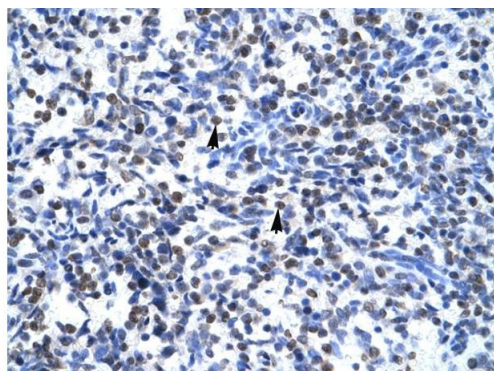
There are more publications referencing this product on: [Product page](#)

Images



Western Blotting

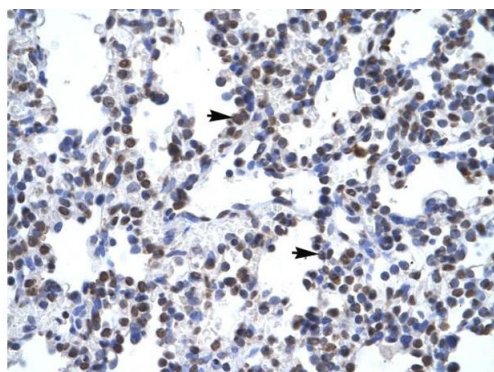
Image 1. WB Suggested Anti-GCM1 Antibody Titration: 0.2-1 ug/ml ELISA Titer: 1:7812500 Positive Control: Human Placenta



Rabbit Anti-GCM1 Antibody
Catalog Number: P100836
Lot Number: QC0836
Paraffin Embedded Tissue: Human Spleen
Cells with Positive label: Spleen cells (Indicated with Arrows)
Antibody Concentration: 4.0-8.0 µg/ml
Magnification: 400X

Immunohistochemistry

Image 2. Human Spleen



Rabbit Anti-GCM1 Antibody
Catalog Number: P100836
Lot Number: QC0836
Paraffin Embedded Tissue: Human Lung
Cells with Positive label: Alveolar cells (Indicated with Arrows)
Antibody Concentration: 4.0-8.0 µg/ml
Magnification: 400X

Immunohistochemistry

Image 3. Human Lung

Please check the [product details page](#) for more images. Overall 5 images are available for ABIN2792608.