

Datasheet for ABIN2792609
anti-GCM1 antibody (C-Term)[Go to Product page](#)

2 Images

1 Publication

Overview

Quantity:	100 µL
Target:	GCM1
Binding Specificity:	C-Term
Reactivity:	Human, Dog, Horse, Rabbit
Host:	Rabbit
Clonality:	Polyclonal
Conjugate:	This GCM1 antibody is un-conjugated
Application:	Western Blotting (WB)

Product Details

Immunogen:	The immunogen is a synthetic peptide directed towards the C terminal region of human GCM1
Sequence:	DFNSYVQSPA YHSPQEDPFL FTYASHPHQQ YSLPSKSSKW DFEEEMTYLG
Cross-Reactivity:	Dog (Canine), Human
Predicted Reactivity:	Dog: 90%, Horse: 92%, Human: 100%, Rabbit: 81%
Characteristics:	This is a rabbit polyclonal antibody against GCM1. It was validated on Western Blot using a cell lysate as a positive control.
Purification:	Affinity Purified

Target Details

Target:	GCM1
---------	------

Target Details

Alternative Name:	GCM1 / GCMA (GCM1 Products)
Background:	<p>GCM1 is a DNA-binding protein with a gcm-motif (glial cell missing motif). GCM1 is a homolog of the Drosophila glial cells missing gene (gcm). This protein binds to the GCM-motif (A/G)CCCGCAT, a novel sequence among known targets of DNA-binding proteins.</p> <p>Alias Symbols: GCMA, hGCMA</p> <p>Protein Interaction Partner: FBXW2, UBC, SENP1, CAMK1, SUMO1, DUSP23, CREBBP, HDAC5, HDAC4, HDAC3, HDAC1, CUL1, SKP1, UBE2I,</p> <p>Protein Size: 436</p>
Molecular Weight:	49 kDa
Gene ID:	8521
NCBI Accession:	NM_003643 , NP_003634
UniProt:	Q9NP62

Application Details

Application Notes:	<p>WB Suggested Anti-GCM1 Antibody Titration: 0.2-1 µg/mL</p> <p>Positive Control: HepG2 cell lysate.</p> <p>Optimal working dilutions should be determined experimentally by the investigator.</p>
Comment:	Antigen size: 436 AA
Restrictions:	For Research Use only

Handling

Format:	Liquid
Concentration:	Lot specific
Buffer:	Liquid. Purified antibody supplied in 1x PBS buffer with 0.09 % (w/v) sodium azide and 2 % sucrose.
Preservative:	Sodium azide
Precaution of Use:	This product contains Sodium azide: a POISONOUS AND HAZARDOUS SUBSTANCE which should be handled by trained staff only.
Handling Advice:	Avoid repeated freeze-thaw cycles.
Storage:	-20 °C

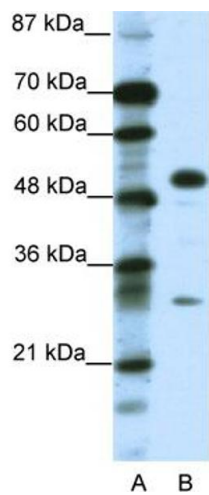
Handling

Storage Comment: For short term use, store at 2-8°C up to 1 week. For long term storage, store at -20°C in small aliquots to prevent freeze-thaw cycles.

Publications

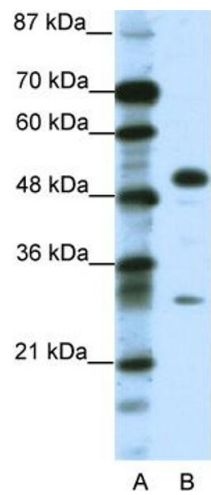
Product cited in: Moon, Kim, Cho: "A nanowire-based label-free immunosensor: direct incorporation of a PSA antibody in electropolymerized polypyrrole." in: **Biosensors & bioelectronics**, Vol. 57, pp. 157-61 , (2014) ([PubMed](#)).

Images



Western Blotting

Image 1. WB Suggested Anti-GCM1 Antibody Titration: 0.2-1 ug/ml Positive Control: HepG2 cell lysate



Rabbit Anti-GCM1 Antibody
Catalog Number: P100837
Lot Number: QC0837
LaneA: Marker
LaneB: HepG2 Cell Lysate

Antibody Titration: 0.25µg/ml
Gel Concentration: 12%

Western Blotting

Image 2. WB Suggested Anti-GCM1 Antibody Titration: 0.2-1 µg/mL Positive Control: HepG2 cell lysate