

Datasheet for ABIN2792611  
**anti-IRF8 antibody (N-Term)**[Go to Product page](#)

## 5 Images

## Overview

|                      |   |
|----------------------|---|
| Quantity:            | 100 µL  |
| Target:              | IRF8  |
| Binding Specificity: | N-Term  |
| Reactivity:          | Human, Mouse, Rat, Cow, Dog, Guinea Pig, Horse, Rabbit, Zebrafish (Danio rerio) |
| Host:                | Rabbit  |
| Clonality:           | Polyclonal  |
| Conjugate:           | This IRF8 antibody is un-conjugated   |
| Application:         | Western Blotting (WB), Immunohistochemistry (IHC)                               |

## Product Details

|                       |   |
|-----------------------|---|
| Immunogen:            | The immunogen is a synthetic peptide directed towards the N terminal region of human IRF8                               |
| Sequence:             | MFRIPWKHAG KQDYNQEVDA SIFKAWAVFK GKFKEGDKAE PATWKTRLRC  |
| Cross-Reactivity:     | Cow (Bovine), Dog (Canine), Chicken, Human, Mouse (Murine), Rat (Rattus)  |
| Predicted Reactivity: | Cow: 100%, Dog: 100%, Guinea Pig: 100%, Horse: 100%, Human: 100%, Mouse: 100%, Rabbit: 100%, Rat: 100%, Zebrafish: 100% |
| Characteristics:      | This is a rabbit polyclonal antibody against IRF8. It was validated on Western Blot and immunohistochemistry.           |
| Purification:         | Affinity Purified   |



## Target Details

|                   |   |
|-------------------|---|
| Target:           | IRF8  |
| Alternative Name: | IRF8 / ICSBP1 ( <a href="#">IRF8 Products</a> )   |
| Background:       | <p>Interferon regulatory factor 8 (IRF8, interferon consensus sequence-binding protein, Ion ChannelSBP) is a transcription factor of the interferon (IFN) regulatory factor (IRF) family. Proteins of this family are composed of a conserved DNA-binding domain in the N-terminal region and a divergent C-terminal region that serves as the regulatory domain. The IRF family proteins bind to the IFN-stimulated response element (ISRE) and regulate expression of genes stimulated by type I IFNs, namely IFN-<math>\alpha</math> and IFN-<math>\beta</math>. IRF family proteins also control expression of IFN-<math>\alpha</math> and IFN-<math>\beta</math>-regulated genes that are induced by viral infection.</p> <p>Alias Symbols: ICSBP, IRF-8, ICSBP1, H-ICSBP</p> <p>Protein Interaction Partner: SPI1, IRF1, TOP1, ZBTB17, PDGFRB, CBL, UBC, COPS4, COPS5, COPS6, COPS2, MID1, IRF6, GPS1, CDK4, SQSTM1, TRAF6, SMURF2, IRF2, TRIM21, IRF8, ETV6, RELA, NFKB1,</p> <p>Protein Size: 426</p> |
| Molecular Weight: | 48 kDa  |
| Gene ID:          | 3394  |
| NCBI Accession:   | <a href="#">NM_002163</a> , <a href="#">NP_002154</a>   |
| UniProt:          | <a href="#">Q02556</a>  |
| Pathways:         | <a href="#">Cellular Response to Molecule of Bacterial Origin</a>   |

## Application Details

|                    |   |
|--------------------|---|
| Application Notes: | <p>WB Suggested Anti-IRF8 Antibody Titration: 0.2-1 <math>\mu</math>g/mL</p> <p>ELISA Titer: 1:62500</p> <p>Positive Control: Jurkat cell lysate.</p> <p>Optimal working dilutions should be determined experimentally by the investigator.</p> |
| Comment:           | Antigen size: 426 AA  |
| Restrictions:      | For Research Use only   |

## Handling

|                |              |
|----------------|--------------|
| Format:        | Liquid       |
| Concentration: | Lot specific |



## Handling

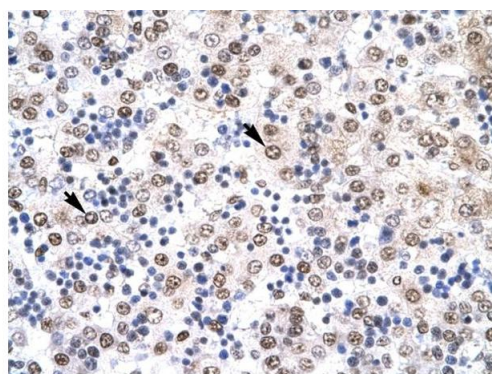
|                    |   |
|--------------------|---|
| Buffer:            | Liquid. Purified antibody supplied in 1x PBS buffer with 0.09 % (w/v) sodium azide and 2 % sucrose.                                     |
| Preservative:      | Sodium azide  |
| Precaution of Use: | This product contains Sodium azide: a POISONOUS AND HAZARDOUS SUBSTANCE which should be handled by trained staff only.                  |
| Handling Advice:   | Avoid repeated freeze-thaw cycles.  |
| Storage:           | -20 °C  |
| Storage Comment:   | For short term use, store at 2-8°C up to 1 week. For long term storage, store at -20°C in small aliquots to prevent freeze-thaw cycles. |

## Images



### Western Blotting

**Image 1.** WB Suggested Anti-IRF8 Antibody Titration: 0.2-1 ug/ml ELISA Titer: 1:62500 Positive Control: Jurkat cell lysate

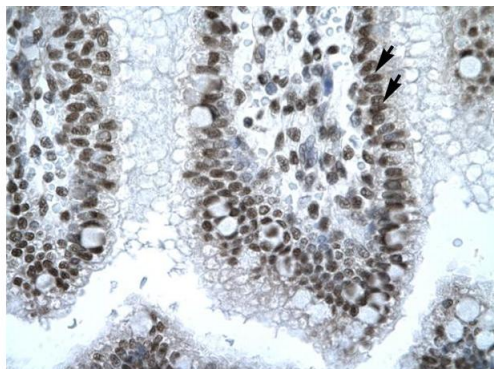


Rabbit Anti-IRF8 Antibody  
Catalog Number: P100841  
Lot Number: QC0841  
Paraffin Embedded Tissue: Human Liver  
Cells with Positive label: Hepatocyte (Indicated with Arrows)  
Antibody Concentration: 4.0-8.0 µg/ml  
Magnification: 400X

### Immunohistochemistry

**Image 2.** Immunohistochemistry with Human Liver cell lysate tissue





Rabbit Anti-IRF8 Antibody  
Catalog Number: P100841  
Lot Number: QC0841  
Paraffin Embedded Tissue: Human Intestine  
Cells with Positive label: Epithelial cells of intestinal villus (Indicated with Arrows)  
Antibody Concentration: 4.0-8.0 µg/ml  
Magnification: 400X

### Immunohistochemistry

**Image 3.** Immunohistochemistry with Human Intestine tissue

Please check the [product details page](#) for more images. Overall 5 images are available for ABIN2792611.