

Datasheet for ABIN2792615
anti-LHX1 antibody (C-Term)[Go to Product page](#)

2 Images

Overview

Quantity:	100 µL
Target:	LHX1
Binding Specificity:	C-Term
Reactivity:	Human, Mouse, Rat, Cow, Zebrafish (Danio rerio)
Host:	Rabbit
Clonality:	Polyclonal
Conjugate:	This LHX1 antibody is un-conjugated
Application:	Western Blotting (WB), Immunohistochemistry (IHC)

Product Details

Immunogen:	The immunogen is a synthetic peptide directed towards the C terminal region of human LHX1
Sequence:	PEPSLPGPLH SMSAEVFGPS PPFSSLSVNG GASYG NHLSH PPEMNEAAVW
Cross-Reactivity:	Cow (Bovine), Dog (Canine), Chicken, Human, Mouse (Murine), Rabbit, Rat (Rattus)
Predicted Reactivity:	Cow: 100%, Human: 100%, Mouse: 100%, Rat: 100%, Zebrafish: 85%
Characteristics:	This is a rabbit polyclonal antibody against LHX1. It was validated on Western Blot and immunohistochemistry.
Purification:	Protein A purified

Target Details

Target:	LHX1
---------	------

Target Details

Alternative Name:	LHX1 (LHX1 Products)
Background:	<p>LHX1 is a member of a large protein family which contains the LIM domain, a unique cysteine-rich zinc-binding domain. It may function as a transcriptional regulator and be involved in control of differentiation and development of neural and lymphoid cells. A similar protein in mice is an essential regulator of the vertebrate head organizer.</p> <p>Alias Symbols: LIM1, LIM-1</p> <p>Protein Interaction Partner: ISL1, RLIM, LHX3, OTX2, FOXA2,</p> <p>Protein Size: 406</p>
Molecular Weight:	45 kDa
Gene ID:	3975
NCBI Accession:	NM_005568 , NP_005559
UniProt:	P48742

Application Details

Application Notes:	<p>WB Suggested Anti-LHX1 Antibody Titration: 0.4 µg/mL</p> <p>Positive Control: HepG2 cell lysate.</p> <p>Optimal working dilutions should be determined experimentally by the investigator.</p>
Comment:	Antigen size: 406 AA
Restrictions:	For Research Use only

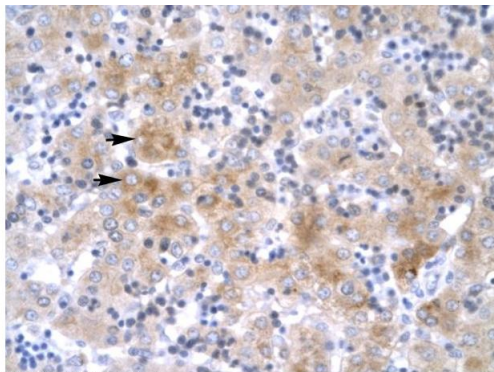
Handling

Format:	Liquid
Concentration:	Lot specific
Buffer:	Liquid. Purified antibody supplied in 1x PBS buffer with 0.09 % (w/v) sodium azide and 2 % sucrose.
Preservative:	Sodium azide
Precaution of Use:	This product contains Sodium azide: a POISONOUS AND HAZARDOUS SUBSTANCE which should be handled by trained staff only.
Handling Advice:	Avoid repeated freeze-thaw cycles.
Storage:	-20 °C

Handling

Storage Comment: For short term use, store at 2-8°C up to 1 week. For long term storage, store at -20°C in small aliquots to prevent freeze-thaw cycles.

Images



Rabbit Anti-LHX1 Antibody
Catalog Number: P100851
Lot Number: QC0851
Paraffin Embedded Tissue: Human Liver
Cells with Positive label: Hepatocytes (Indicated with Arrows)
Antibody Concentration: 4.0-8.0 µg/ml
Magnification: 400X



Immunohistochemistry

Image 1. Human Liver

Western Blotting

Image 2. WB Suggested Anti-LHX1 Antibody Titration:
0.4ug/ml Positive Control: HepG2 cell lysate