

Datasheet for ABIN2792620
anti-PAX2A antibody (Middle Region)[Go to Product page](#)

4 Images

Overview

Quantity:	100 µL
Target:	PAX2A
Binding Specificity:	Middle Region
Reactivity:	Human, Mouse, Rat, Zebrafish (Danio rerio), Rabbit, Sheep, Cow, Dog, Guinea Pig
Host:	Rabbit
Clonality:	Polyclonal
Conjugate:	This PAX2A antibody is un-conjugated
Application:	Western Blotting (WB), Immunohistochemistry (IHC)

Product Details

Immunogen:	The immunogen is a synthetic peptide directed towards the middle region of human PAX2
Sequence:	VSSASNDPVG SYSINGILGI PRSNGEKRRK DEDVSEGSVP NGDSQSGVDS
Cross-Reactivity:	Chicken, Human, Mouse (Murine), Rat (Rattus)
Predicted Reactivity:	Cow: 100%, Dog: 100%, Guinea Pig: 100%, Human: 100%, Mouse: 92%, Rabbit: 100%, Rat: 92%, Sheep: 100%, Zebrafish: 100%
Characteristics:	This is a rabbit polyclonal antibody against PAX2. It was validated on Western Blot and immunohistochemistry.
Purification:	Protein A purified

Target Details

Target:	PAX2A
Alternative Name:	PAX2 (PAX2A Products)
Background:	<p>PAX2 encodes paired box gene 2, one of many human homologues of the Drosophila melanogaster gene prd. The central feature of this transcription factor gene family is the conserved DNA-binding paired box domain. PAX2 is believed to be a target of transcriptional suppression by the tumor suppressor gene WT1. Mutations within PAX2 have been shown to result in optic nerve colobomas and renal hypoplasia.</p> <p>Protein Interaction Partner: BBS7, BBS4, BBS2, BBS1, RB1, BRCA1, SFRP2, PAXIP1, WT1, MAPK8IP1, MAPK8, ID2,</p> <p>Protein Size: 417</p>
Molecular Weight:	45 kDa
Gene ID:	5076
NCBI Accession:	NM_003988 , NP_003979
UniProt:	Q02962
Pathways:	Carbohydrate Homeostasis , Stem Cell Maintenance , Tube Formation

Application Details

Application Notes:	<p>WB Suggested Anti-PAX2 Antibody Titration: 1.0 µg/mL</p> <p>ELISA Titer: 1:312500</p> <p>Positive Control: Human Liver.</p> <p>Optimal working dilutions should be determined experimentally by the investigator.</p>
Comment:	Antigen size: 417 AA
Restrictions:	For Research Use only

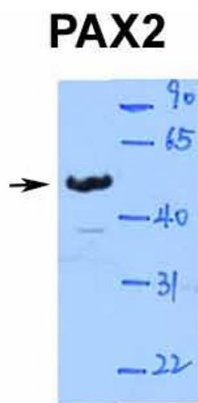
Handling

Format:	Liquid
Concentration:	Lot specific
Buffer:	Liquid. Purified antibody supplied in 1x PBS buffer with 0.09 % (w/v) sodium azide and 2 % sucrose.
Preservative:	Sodium azide

Handling

Precaution of Use:	This product contains Sodium azide: a POISONOUS AND HAZARDOUS SUBSTANCE which should be handled by trained staff only.
Handling Advice:	Avoid repeated freeze-thaw cycles.
Storage:	-20 °C
Storage Comment:	For short term use, store at 2-8°C up to 1 week. For long term storage, store at -20°C in small aliquots to prevent freeze-thaw cycles.

Images



Western Blotting

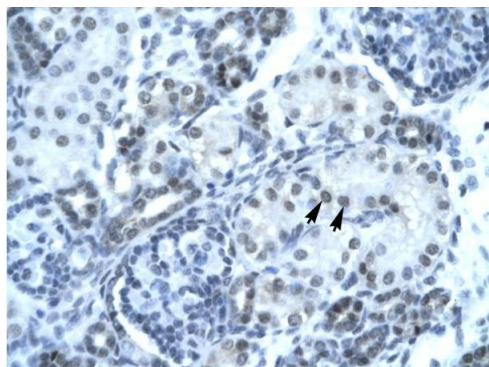
Image 1. WB Suggested Anti-PAX2 Antibody Titration:

1.0ug/ml

ELISA Titer: 1:312500

Positive Control: Human Liver

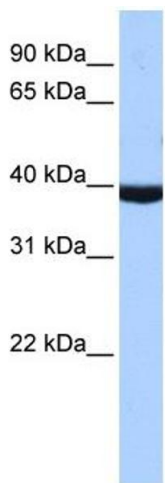
See Immunoblot 1 Data and Customer Feedback tab for more information.



Rabbit Anti-PAX2 Antibody
Catalog Number: P100859
Lot Number: QC0859
Paraffin Embedded Tissue: Human kidney
Cells with Positive label: Epithelial cells of renal tubule (Indicated with Arrows)
Antibody Concentration: 4.0-8.0 µg/ml
Magnification: 400X

Immunohistochemistry

Image 2. Rabbit Anti-PAX2 Antibody p100859 Paraffin Embedded Tissue: Human Kidney Cellular Data: Epithelial cells of renal tubule Antibody Concentration: 4.0-8.0 ug/ml Magnification: 400X



Western Blotting

Image 3. WB Suggested Anti-PAX2 Antibody Titration:
1.0ug/ml ELISA Titer: 1:312500 Positive Control: MCF7 cell lysate

Please check the [product details page](#) for more images. Overall 4 images are available for ABIN2792620.