

Datasheet for ABIN2792629  
**anti-TFAP2A antibody (C-Term)**

## 3 Images

[Go to Product page](#)

## Overview

Quantity:	100 µL
Target:	TFAP2A
Binding Specificity:	C-Term
Reactivity:	Human, Mouse, Rat, Dog, Guinea Pig, Rabbit
Host:	Rabbit
Clonality:	Polyclonal
Conjugate:	This TFAP2A antibody is un-conjugated
Application:	Western Blotting (WB)

## Product Details

Immunogen:	The immunogen is a synthetic peptide directed towards the C terminal region of human TFAP2A
Sequence:	NLISHGFGSP AVCAAVTALQ NYLTEALKAM DKMYLSNNPN SHTDNNAKSS
Cross-Reactivity:	Cow (Bovine), Chicken, Human, Mouse (Murine), Pig (Porcine), Rat (Rattus)
Predicted Reactivity:	Dog: 92%, Guinea Pig: 92%, Human: 100%, Mouse: 92%, Rabbit: 92%, Rat: 92%
Characteristics:	This is a rabbit polyclonal antibody against TFAP2A. It was validated on Western Blot using a cell lysate as a positive control.
Purification:	Protein A purified

## Target Details

Target:	TFAP2A
Alternative Name:	AP-2 alpha / TFAP2A ( <a href="#">TFAP2A Products</a> )
Background:	<p>TFAP2A is a sequence-specific DNA-binding protein that interacts with inducible viral and cellular enhancer elements to regulate transcription of selected genes. AP-2 factors bind to the consensus sequence 5'-GCCNNNGGC-3' and activate genes involved in a large spectrum of important biological functions including proper eye, face, body wall, limbs and neural tube development. They also suppress a number of genes including MCAM/MUC18, C/EBP alpha and MYC. AP-2 alpha is the only AP-2 protein required for early morphogenesis of the lens vesicle. AP2-alpha is a 52-kD retinoic acid-inducible and developmentally regulated activator of transcription that binds to a consensus DNA-binding sequence CCCCAGGC in the SV40 and metallothionein (MIM 156350) promoters.[supplied by OMIM].</p> <p>Alias Symbols: AP-2, BOFS, AP2TF, TFAP2, AP-2alpha</p> <p>Protein Interaction Partner: MKRN3, GSTO2, KCTD15, SUMO1, HECW2, SP1, BAG3, RB1, UBC, DAB2, Fcho2, EPAS1, SRA1, EPS15, KCTD1, EPN1, SH3BP4, UBE2I, AURKA, BRCA1, DNMT3A, ELAVL1, SUMO4, SUMO2, NPM1, YY1, PPARG, EPN2, CITED4, LDLRAP1, CITED2, EP300, MAGI1, WWP2, WWP1, HIP1, CASP6, CASP3</p> <p>Protein Size: 437</p>
Molecular Weight:	48 kDa
Gene ID:	7020
NCBI Accession:	<a href="#">NM_003220</a> , <a href="#">NP_003211</a>
UniProt:	<a href="#">P05549</a>
Pathways:	<a href="#">Caspase Cascade in Apoptosis</a> , <a href="#">EGFR Signaling Pathway</a> , <a href="#">Response to Water Deprivation</a> , <a href="#">Sensory Perception of Sound</a> , <a href="#">Tube Formation</a> , <a href="#">Embryonic Body Morphogenesis</a> , <a href="#">Brown Fat Cell Differentiation</a> , <a href="#">Lipid Metabolism</a>

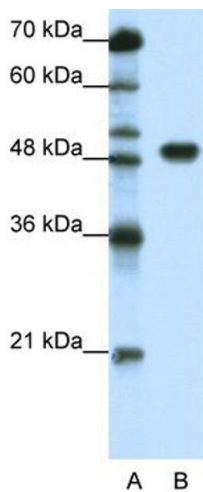
## Application Details

Application Notes:	<p>WB Suggested Anti-TFAP2A Antibody Titration: 1.25 µg/mL</p> <p>ELISA Titer: 1:312500</p> <p>Positive Control: HepG2 cell lysate.</p> <p>Optimal working dilutions should be determined experimentally by the investigator.</p>
Comment:	Antigen size: 437 AA
Restrictions:	For Research Use only

## Handling

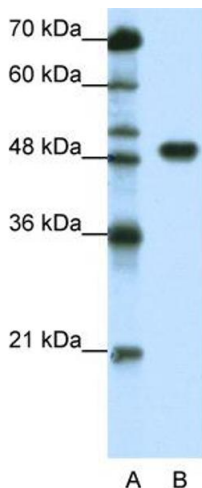
Format:	Liquid
Concentration:	Lot specific
Buffer:	Liquid. Purified antibody supplied in 1x PBS buffer with 0.09 % (w/v) sodium azide and 2 % sucrose.
Preservative:	Sodium azide
Precaution of Use:	This product contains Sodium azide: a POISONOUS AND HAZARDOUS SUBSTANCE which should be handled by trained staff only.
Handling Advice:	Avoid repeated freeze-thaw cycles.
Storage:	-20 °C
Storage Comment:	For short term use, store at 2-8°C up to 1 week. For long term storage, store at -20°C in small aliquots to prevent freeze-thaw cycles.

## Images



### Western Blotting

**Image 1.** WB Suggested Anti-TFAP2A Antibody Titration: 1.25ug/ml ELISA Titer: 1:312500 Positive Control: HepG2 cell lysate

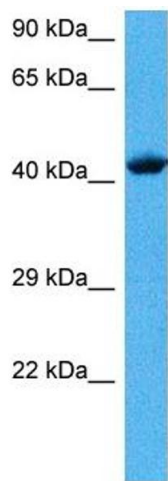


Rabbit Anti-TFAP2A Antibody  
Catalog Number: P100878  
Lot Number: QC7881  
LaneA: Marker  
LaneB: HepG2 Cell Lysate

Antibody Titration: 1.25µg/ml  
Gel Concentration: 12%

### Western Blotting

**Image 2.** WB Suggested Anti-TFAP2A  
Antibody Titration: 1.25 µg/mL ELISA Titer: 1:312500  
Positive Control: HepG2 cell lysate



**Western Blotting**

**Image 3.** Host: Mouse Target Name: TFAP2A Sample  
Tissue: Mouse Heart Antibody Dilution: 1ug/ml