

Datasheet for ABIN2792633
anti-SNAPC1 antibody (C-Term)

2 Images

[Go to Product page](#)

Overview

Quantity:	100 µL
Target:	SNAPC1
Binding Specificity:	C-Term
Reactivity:	Human
Host:	Rabbit
Clonality:	Polyclonal
Conjugate:	This SNAPC1 antibody is un-conjugated
Application:	Western Blotting (WB), Immunohistochemistry (IHC)

Product Details

Immunogen:	The immunogen is a synthetic peptide directed towards the C terminal region of human SNAPC1
Sequence:	KMSLRNKGNV QNIHKEDKPL SLSMPVITEE EENESLSGTE FTASKKRRKH
Cross-Reactivity:	Human
Predicted Reactivity:	Human: 100%
Characteristics:	This is a rabbit polyclonal antibody against SNAPC1. It was validated on Western Blot and immunohistochemistry.
Purification:	Protein A purified

Target Details

Target:	SNAPC1
Alternative Name:	SNAPC1 / SNAP43 (SNAPC1 Products)
Background:	<p>SNAPC1 is a part of the SNAPc complex required for the transcription of both RNA polymerase II and III small-nuclear RNA genes. It binds to the proximal sequence element (PSE), a non-TATA-box basal promoter element common to these 2 types of genes and recruits TBP and BRF2 to the U6 snRNA TATA box.</p> <p>Alias Symbols: SNAP43, PTFgamma</p> <p>Protein Interaction Partner: UBC, TBP, SNAPC2, RHOXF2, TRIM29, NR2E3, HOXA10, SNAPC4, SNAPC3, RB1, SNAPC5,</p> <p>Protein Size: 368</p>
Molecular Weight:	43 kDa
Gene ID:	6617
NCBI Accession:	NM_003082 , NP_003073
UniProt:	Q16533

Application Details

Application Notes:	<p>WB Suggested Anti-SNAPC1 Antibody Titration: 2.5 µg/mL</p> <p>Positive Control: Transfected 293T.</p> <p>Optimal working dilutions should be determined experimentally by the investigator.</p>
Comment:	Antigen size: 368 AA
Restrictions:	For Research Use only

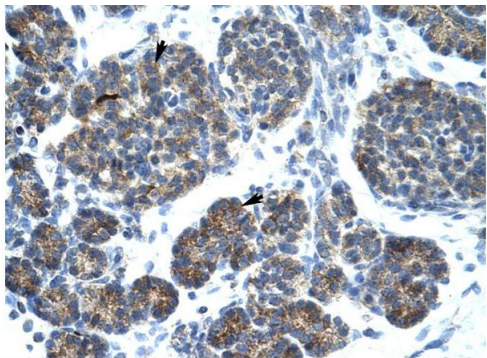
Handling

Format:	Liquid
Concentration:	Lot specific
Buffer:	Liquid. Purified antibody supplied in 1x PBS buffer with 0.09 % (w/v) sodium azide and 2 % sucrose.
Preservative:	Sodium azide
Precaution of Use:	This product contains Sodium azide: a POISONOUS AND HAZARDOUS SUBSTANCE which should be handled by trained staff only.

Handling

Handling Advice:	Avoid repeated freeze-thaw cycles.
Storage:	-20 °C
Storage Comment:	For short term use, store at 2-8°C up to 1 week. For long term storage, store at -20°C in small aliquots to prevent freeze-thaw cycles.

Images



Rabbit Anti-SNAPC1 Antibody
Catalog Number: P100885
Lot Number: QC3544
Paraffin Embedded Tissue: Human Pancreas
Cells with Positive label: Epithelial cells of pancreatic acinus (Indicated with Arrows)
Antibody Concentration: 4.0-8.0 µg/ml
Magnification: 400X



Immunohistochemistry

Image 1. Human Pancrease

Western Blotting

Image 2. WB Suggested Anti-SNAPC1 Antibody Titration:
2.5ug/ml Positive Control: Transfected 293T