

Datasheet for ABIN2792638
anti-GTF2E1 antibody (C-Term)[Go to Product page](#)

2 Images

Overview

Quantity:	100 µL
Target:	GTF2E1
Binding Specificity:	C-Term
Reactivity:	Mouse, Rat, Cow, Dog, Horse, Guinea Pig, Rabbit
Host:	Rabbit
Clonality:	Polyclonal
Conjugate:	This GTF2E1 antibody is un-conjugated
Application:	Western Blotting (WB), Immunohistochemistry (IHC)

Product Details

Immunogen:	The immunogen is a synthetic peptide directed towards the C terminal region of human GTF2E1
Sequence:	VADDPIVMVA GRPFSYSEVS QRPELVAQMT PEEKEAYIAM GQRMFEDLFE
Cross-Reactivity:	Cow (Bovine), Dog (Canine), Fruit Fly (Drosophila melanogaster), Human, Mouse (Murine), Rat (Rattus)
Predicted Reactivity:	Cow: 100%, Dog: 100%, Guinea Pig: 100%, Horse: 100%, Mouse: 100%, Rabbit: 100%, Rat: 100%
Characteristics:	This is a rabbit polyclonal antibody against GTF2E1. It was validated on Western Blot and immunohistochemistry.
Purification:	Affinity Purified

Target Details

Target:	GTF2E1
Alternative Name:	GTF2E1 / TF2E1 (GTF2E1 Products)
Background:	<p>The general transcription factor TFIIIE has an essential role in eukaryotic transcription initiation together with RNA polymerase II and other general factors. Human TFIIIE consists of two subunits of relative molecular mass 57,000 (TFIIIE-alpha) and 34,000 (TFIIIE-beta) and joins the preinitiation complex after RNA polymerase II and TFIIIF. TFIIIE-alpha is necessary for transcription initiation together with TFIIIE-beta, and recombinant TFIIIE-alpha can fully replace the natural subunit in an in vitro transcription assay. Its sequence contains several interesting structural motifs (leucine repeat, zinc finger and helix-turn-helix) and sequence similarities to bacterial sigma factors that suggest direct involvement in the regulation of transcription initiation</p> <p>Alias Symbols: FE, TF2E1, TFIIIE-A</p> <p>Protein Interaction Partner: UBC, AARSD1, ACBD3, XPO5, SH3GLB2, OXR1, NSUN2, RPU5D2, SNF8, EFTUD2, TTC1, SH3GL1, SARS, HARS, SRPK2, TCEA1, GTF2H1, GTF2E2, CDK7, APP, tat, GTF2F1, ELAVL1, ZSCAN1, ZBTB9, TRIM15, PCBD2, TRIM29, CBFA2T2, IKBKG, ATF7IP, TAF6, GTF2B, TRIM24, SND1, GTF2H4,</p> <p>Protein Size: 439</p>
Molecular Weight:	49 kDa
Gene ID:	2960
NCBI Accession:	NM_005513 , NP_005504
UniProt:	P29083

Application Details

Application Notes:	<p>WB Suggested Anti-GTF2 E1 Antibody Titration: 0.2-1 µg/mL</p> <p>Positive Control: Daudi cell lysate.</p> <p>Optimal working dilutions should be determined experimentally by the investigator.</p>
Comment:	Antigen size: 439 AA
Restrictions:	For Research Use only

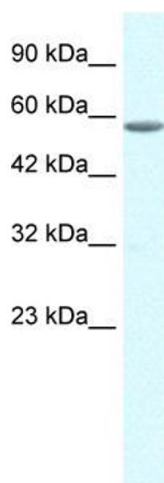
Handling

Format:	Liquid
Concentration:	Lot specific

Handling

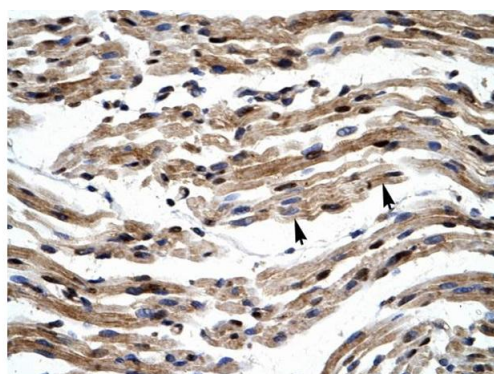
Buffer:	Liquid. Purified antibody supplied in 1x PBS buffer with 0.09 % (w/v) sodium azide and 2 % sucrose.
Preservative:	Sodium azide
Precaution of Use:	This product contains Sodium azide: a POISONOUS AND HAZARDOUS SUBSTANCE which should be handled by trained staff only.
Handling Advice:	Avoid repeated freeze-thaw cycles.
Storage:	-20 °C
Storage Comment:	For short term use, store at 2-8°C up to 1 week. For long term storage, store at -20°C in small aliquots to prevent freeze-thaw cycles.

Images



Western Blotting

Image 1. WB Suggested Anti-GTF2E1 Antibody Titration:
0.2-1 ug/ml Positive Control: Daudi cell lysate



Rabbit Anti-GTF2E1 Antibody
Catalog Number: P100892
Lot Number: QC0892
Paraffin Embedded Tissue: Human Muscle
Cells with Positive label: Skeletal muscle cells (Indicated with Arrows)
Antibody Concentration: 4.0-8.0 µg/ml
Magnification: 400X

Immunohistochemistry

Image 2. Human Muscle