

Datasheet for ABIN2792641
anti-GTF2H2 antibody (C-Term)[Go to Product page](#)

3 Images

Overview

Quantity:	100 µL
Target:	GTF2H2
Binding Specificity:	C-Term
Reactivity:	Human, Mouse, Horse, Zebrafish (Danio rerio), Dog
Host:	Rabbit
Clonality:	Polyclonal
Conjugate:	This GTF2H2 antibody is un-conjugated
Application:	Western Blotting (WB), Immunohistochemistry (IHC)

Product Details

Immunogen:	The immunogen is a synthetic peptide directed towards the C terminal region of human GTF2H2
Sequence:	CELPVECKIC GLTLVSAPHL ARSYHHLFPL DAFQEIPLEE YNGERFCYGC
Cross-Reactivity:	Cow (Bovine), Dog (Canine), Chicken, Human, Mouse (Murine), Rat (Rattus)
Predicted Reactivity:	Dog: 92%, Horse: 92%, Human: 100%, Mouse: 85%, Zebrafish: 85%
Characteristics:	This is a rabbit polyclonal antibody against GTF2H2. It was validated on Western Blot.
Purification:	Protein A purified

Target Details

Target:	GTF2H2
---------	--------

Target Details

Alternative Name: GTF2H2 / BTF2P44 ([GTF2H2 Products](#))

Background: GTF2 is encoded by a gene that is part of a 500 kb inverted duplication on chromosome 5q13. This duplicated region contains at least four genes and repetitive elements which make it prone to rearrangements and deletions. The repetitiveness and complexity of the sequence have also caused difficulty in determining the organization of this genomic region. This gene is within the telomeric copy of the duplication. Deletion of this gene sometimes accompanies deletion of the neighboring SMN1 gene in spinal muscular atrophy (SMA) patients but it is unclear if deletion of this gene contributes to the SMA phenotype. This gene encodes the 44 kDa subunit of RNA polymerase II transcription initiation factor IIH which is involved in basal transcription and nucleotide excision repair. Transcript variants for this gene have been described, but their full length nature has not been determined. A second copy of this gene within the centromeric copy of the duplication has been described in the literature. It is reported to be different by either two or four base pairs, however, no sequence data is currently available for the centromeric copy of the gene.

Alias Symbols: p44, BTF2, TFIIH, BTF2P44, T-BTF2P44

Protein Interaction Partner: UBC, CDK7, GTF2H5, GTF2H1, SRA1, GTF2H4, GTF2H3, UBD, COPS2, ERCC3, ERCC8, ERCC2, AR, MNAT1, CCNH,

Protein Size: 395

Molecular Weight: 44 kDa

Gene ID: 2966

NCBI Accession: [NM_001515](#), [NP_001506](#)

UniProt: [Q13888](#)

Pathways: [Regulation of G-Protein Coupled Receptor Protein Signaling](#)

Application Details

Application Notes: Optimal working dilutions should be determined experimentally by the investigator.

Comment: Antigen size: 395 AA

Restrictions: For Research Use only

Handling

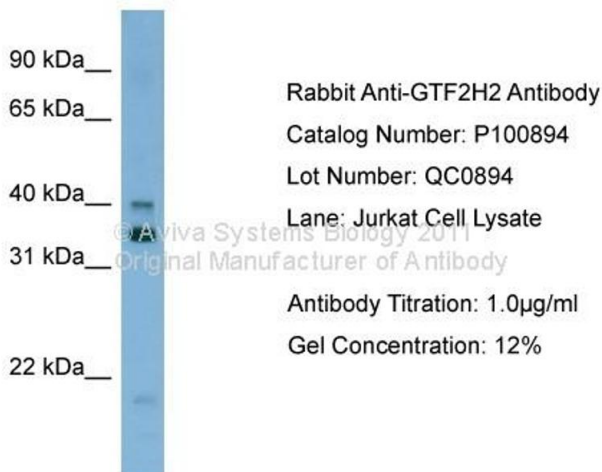
Format: Liquid

Concentration: Lot specific

Handling

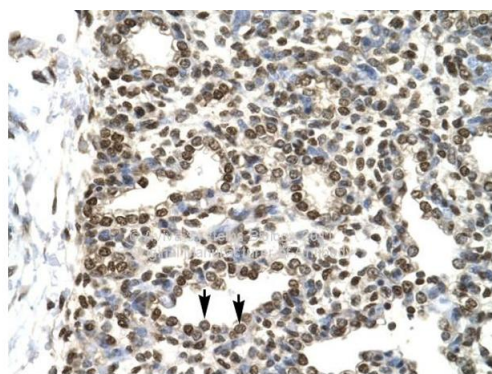
Buffer:	Liquid. Purified antibody supplied in 1x PBS buffer with 0.09 % (w/v) sodium azide and 2 % sucrose.
Preservative:	Sodium azide
Precaution of Use:	This product contains Sodium azide: a POISONOUS AND HAZARDOUS SUBSTANCE which should be handled by trained staff only.
Handling Advice:	Avoid repeated freeze-thaw cycles.
Storage:	-20 °C
Storage Comment:	For short term use, store at 2-8°C up to 1 week. For long term storage, store at -20°C in small aliquots to prevent freeze-thaw cycles.

Images



Western Blotting

Image 1.

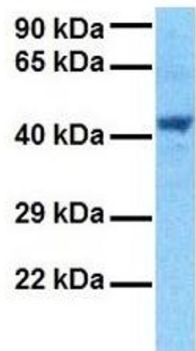


Immunohistochemistry

Image 2. Human Lung

Rabbit Anti-GTF2H2 Antibody
Catalog Number: P100894
Lot Number: QC0894
Paraffin Embedded Tissue: Human Lung
Cells with Positive label: Alveolar cells (Indicated with Arrows)
Antibody Concentration: 4.0-8.0 µg/ml
Magnification: 400X

GTF2H2



Western Blotting

Image 3. Host: Rabbit Target Name: GTF2H2 Sample
Tissue: Human 293T Antibody Dilution: 1.0ug/ml