



[Go to Product page](#)

Datasheet for ABIN2792655  
**anti-E2F5 antibody (N-Term)**

2 Images

Overview

Quantity:	100 µL
Target:	E2F5
Binding Specificity:	N-Term
Reactivity:	Human, Mouse, Rat, Dog, Guinea Pig, Zebrafish (Danio rerio), Rabbit
Host:	Rabbit
Clonality:	Polyclonal
Conjugate:	This E2F5 antibody is un-conjugated
Application:	Western Blotting (WB)

Product Details

Immunogen:	The immunogen is a synthetic peptide directed towards the N terminal region of human E2F5
Sequence:	KAEIEDLELK ERELDQKLL LQSIKNVMD DSINNRFSYV THEDICNCFN
Cross-Reactivity:	Chicken, Human, Mouse (Murine), Rat (Rattus)
Predicted Reactivity:	Dog: 100%, Guinea Pig: 100%, Human: 100%, Mouse: 100%, Rabbit: 100%, Rat: 100%, Zebrafish: 84%
Characteristics:	This is a rabbit polyclonal antibody against E2F5. It was validated on Western Blot using a cell lysate as a positive control.
Purification:	Affinity Purified

## Target Details

---

Target:	E2F5
Alternative Name:	E2F5 ( <a href="#">E2F5 Products</a> )
Background:	<p>E2F5 is a member of the E2F family of transcription factors. The E2F family plays a crucial role in the control of cell cycle and action of tumor suppressor proteins and is also a target of the transforming proteins of small DNA tumor viruses. The E2F proteins contain several evolutionally conserved domains found in most members of the family. These domains include a DNA binding domain, a dimerization domain which determines interaction with the differentiation regulated transcription factor proteins (DP), a transactivation domain enriched in acidic amino acids, and a tumor suppressor protein association domain which is embedded within the transactivation domain. This protein is differentially phosphorylated and is expressed in a wide variety of human tissues. It is more homologous to E2F4, a family member, than to other members. Both this protein and E2F4 interact with tumor suppressor proteins p130 and p107, but not with pRB.</p> <p>Alias Symbols: E2F-5</p> <p>Protein Interaction Partner: RBL2, UBC, KMT2D, BRCC3, SMAD3, EP300, XPO1, CREBBP, TFDP1, RBL1, BIRC5, MYC, MT1G,</p> <p>Protein Size: 346</p>
Molecular Weight:	38 kDa
Gene ID:	1875
NCBI Accession:	<a href="#">NM_001951</a> , <a href="#">NP_001942</a>
UniProt:	<a href="#">Q15329</a>

## Application Details

---

Application Notes:	<p>WB Suggested Anti-E2F5 Antibody Titration: 0.2-1 µg/mL</p> <p>Positive Control: Jurkat cell lysate.</p> <p>Optimal working dilutions should be determined experimentally by the investigator.</p>
Comment:	Antigen size: 346 AA
Restrictions:	For Research Use only

## Handling

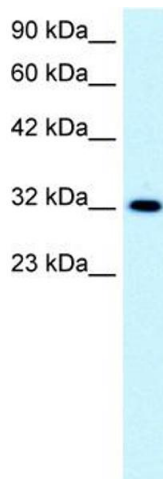
---

Format:	Liquid
Concentration:	Lot specific

## Handling

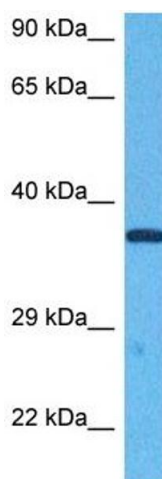
Buffer:	Liquid. Purified antibody supplied in 1x PBS buffer with 0.09 % (w/v) sodium azide and 2 % sucrose.
Preservative:	Sodium azide
Precaution of Use:	This product contains Sodium azide: a POISONOUS AND HAZARDOUS SUBSTANCE which should be handled by trained staff only.
Handling Advice:	Avoid repeated freeze-thaw cycles.
Storage:	-20 °C
Storage Comment:	For short term use, store at 2-8°C up to 1 week. For long term storage, store at -20°C in small aliquots to prevent freeze-thaw cycles.

## Images



### Western Blotting

**Image 1.** WB Suggested Anti-E2F5 Antibody Titration: 0.2-1 ug/ml Positive Control: Jurkat cell lysate



### Western Blotting

**Image 2.** Host: Rabbit Target Name: E2F5 Sample Tissue: Human Jurkat Whole Cell Antibody Dilution: 1ug/ml